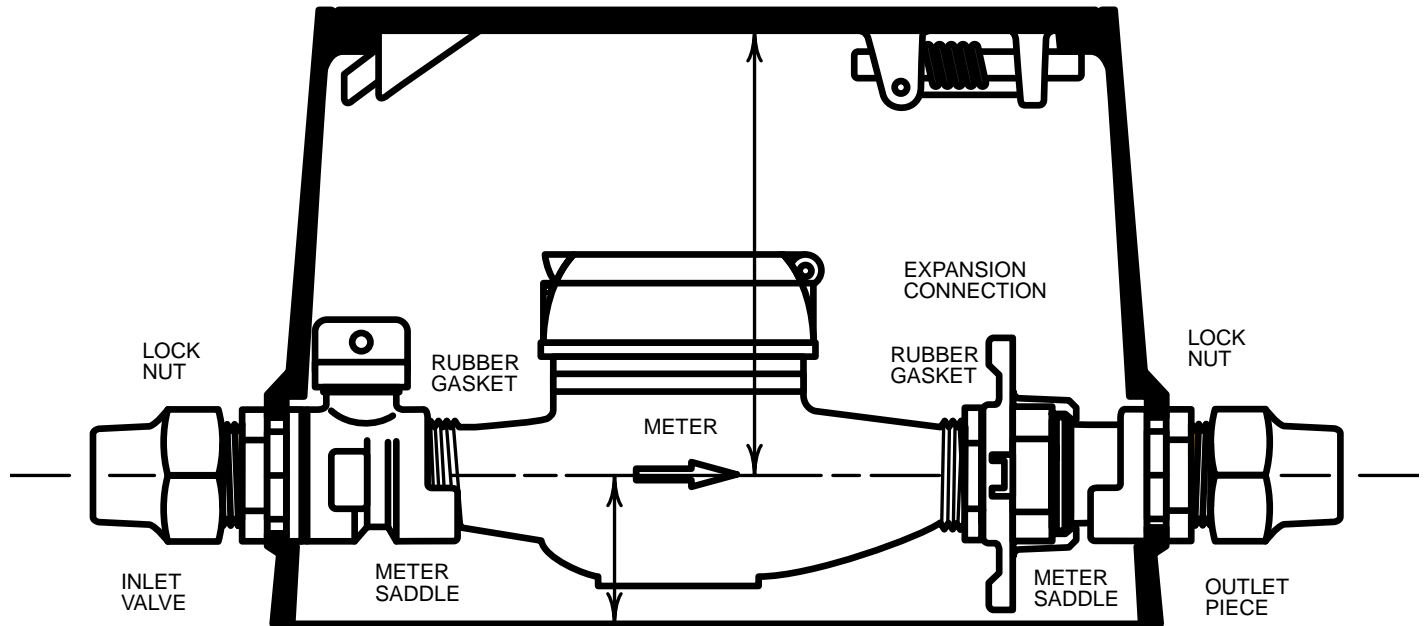


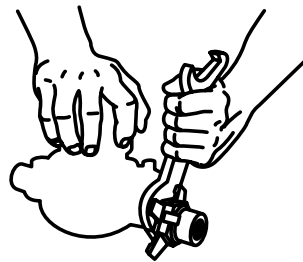
ASSEMBLY INSTRUCTIONS FOR THE FORD GULFBOX



Step 1: From inside Gulfbox, insert Valve inlet piece and outlet piece through holes provided in each end. Attach lock nuts for these two pieces on threads extending through holes in body of Gulfbox, and tighten snugly.

Step 2: Place rubber gaskets provided in saddles of both inlet and outlet pieces.

Step 3: Attach the Expansion Connection to either end of the meter and tighten, as shown in drawing with explanation at right.



The Expansion Connection is tightened on the meter with an ordinary wrench. The combination thereby becomes an expandable unit which can be installed or removed in a matter of seconds.

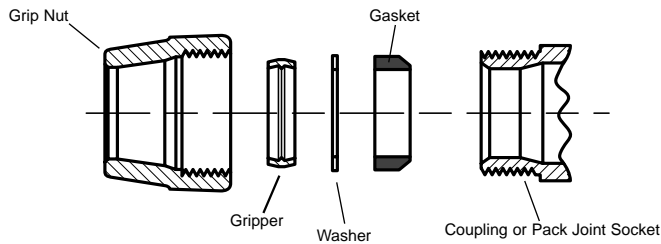
Step 4: Set the meter (with expansion connection attached) in the saddles, and tighten hand-tight by turning expansion connection hand wheel, creating a water-tight connection at both inlet and outlet of meter.

An ideal, yet inexpensive, base for the Gulbox is an 8x16x2" thick solid concrete block, available wherever concrete blocks are sold.



The Ford Meter Box Co., Inc. 775 Manchester Avenue, P.O. Box 443, Wabash, Indiana, USA 46992-0443
Telephone: 260/563-3171 FAX: 1-800-826-3487 Overseas FAX: 260/563-0167 <http://www.fordmeterbox.com>

GRIP JOINT Installation Instructions



1. Prepare service tubing for connection by cleaning, deburring and rounding if necessary.
2. When using polyethylene, install proper size solid, flared insert stiffener in the tubing.
3. After selecting the proper size **GRIP JOINT** fitting, loosen the grip nut and insert tubing into the nut through the grip ring and gasket. The tubing should be inserted into the fitting so that the end of tubing is well past the rubber seal gasket. (The grip nut can also be disassembled from the pack joint socket end as long as the internal parts are kept in the order shown in the diagram above.)
4. Hold the body of the **GRIP JOINT** fitting stationary while installing the nut. Tighten the nut until it stops turning at the end of its internal threads.
5. Always pressure test for leaks before backfilling. Failure to observe these instructions will void the manufacturers warranty.

PRECAUTIONS

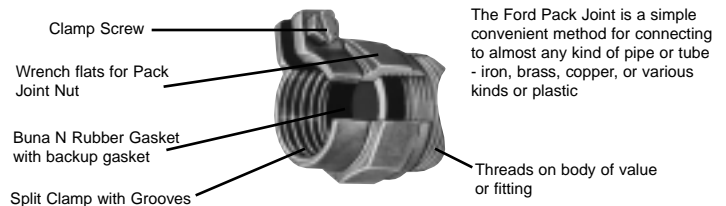
1. **Brass fittings can be damaged by improper handling. Protect threads. Avoid loose fitting wrenches. Do not drop. Backfill and compact carefully so that fittings are not stressed by the weight of the earth.**
2. **If you are unfamiliar with GRIP JOINT connections, a little practice and testing in the shop before going on the job is time well spent.**
3. **Use insert stiffeners with any plastic pipe or tubing.**
4. **Inspect and test all joints, valves and fittings for leaks before backfilling.**
5. **Use extra care with higher pressures (over 100 PSI) and with pipe over 1".**

WARRANTY - READ BEFORE USING PRODUCT

All merchandise is warranted to be from defects in material and factory workmanship. We will provide free of charge new products in equal quantities for any that prove defective within one year from the date of shipment from our factory. **Manufacturer shall not be liable for any loss, damage, or injury, direct or consequential, arising out of the use of or the inability to use the product. Before using, user shall determine the suitability of the product for his intended use or user assumes all risk and liability whatever in connection therewith. No claims for labor or consequential damage will be allowed.** The forgoing may not be changed except by agreement signed by an officer of the manufacturer.

DAMAGE CAUSED BY IMPROPER TOOLS OR HANDLING WILL VOID OUR WARRANTY

PACK JOINT Installation Instructions



Steps for Installation

1. Make sure pipe is round, not flattened. On copper tubing use a rounding tool, if necessary. Clean or scrape off any dirt or corrosion so that surface is smooth.
2. Insert pipe through Pack Joint nut and into the socket of the fitting. If the nut or socket appears too large for pipe, a check should be made to be sure you are using the correct fitting or that pipe is of proper diameter.
3. Tighten Pack Joint nut 1 to 1 1/2 turns after gasket starts to compress. If clamp screw is not accessible, reposition by further tightening Pack Joint nut.
4. To ensure against blowout of pipe, tighten the clamp screw very securely. A socket or box end wrench is preferable to a screwdriver.
5. **ALWAYS PRESSURE TEST FOR LEAKS BEFORE BACKFILLING.**
6. **DO NOT USE THIS FITTING ON A GAS LINE.**

BALL VALVE Installation Instructions



1. Handle valve carefully before and during installation. Protect threads...keep clean...Do not drop or throw valve. Do not use a pipe wrench.
2. Always use an approved sealant or teflon tape on tapered pipe threads.
3. If valve has compression style connection and you are unfamiliar with them, do not install until reading the Pack Joint or Grip Joint instruction card.
4. Use a smooth-jawed adjustable wrench. A loosely fitting pipe wrench can distort the ball and cause a leak.
5. Always pressure test the service line and ball valve before backfilling. Inspect all valves, fittings, joints, and pipe. Test valves for proper operation.
6. Backfill and compact earth with care to avoid damage stress to service line.
7. Protect from freezing, which may distort ball. Do not forcibly try to open or close valve if froze. This will destroy the valve.
8. All Ford valves, including those with stop & waste features must be operated in either the fully opened or the fully closed position.
9. **DO NOT USE THIS VALVE ON A GAS LINE.**



THE FORD METER BOX COMPANY, INC.

P.O. Box 443, Wabash, Indiana, USA 46992-0443 • Phone: 260-563-3171 • Domestic Fax: 1-800-826-3487

Overseas Fax: 260-563-0167 • <http://www.fordmeterbox.com>