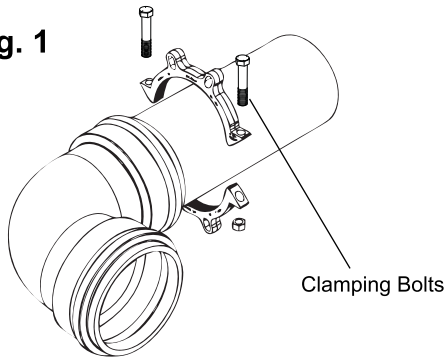


10"-12" SERIES 1360-C INSTALLATION INSTRUCTIONS

U.S. Patent No. 8096591

Fig. 1



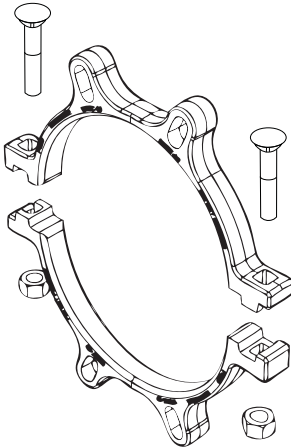
Refer to the FMB website (<http://www.fordmeterbox.com>) for additional and most recent instructions and product information.

1. Assemble the pipe and fitting according to the manufacturer's instructions. Install the Series 1300 split restraint ring on the pipe. (Use connecting rod as a guide to position the split restraint ring.) Tighten the clamping bolts to the minimum recommended torque of 200 ft-lbs.

See figure 1.

2. Unassemble the split back-up ring assembly. **See figure 2.** Measure the bell run outside diameter of the fitting as illustrated below.

Fig. 2



3. Select the low or high range from the table below that includes the measured bell run O.D. Orientate the back-up ring sections (nested or perched) as illustrated below according to the selected range.

Back-Up Ring Range and Orientation

NOM. PIPE SIZE	LOW RANGE (NESTED)	HIGH RANGE (PERCHED)
10"	12.00-12.50	12.51-13.00
12"	14.25-14.75	14.76-15.50

--	--

Fig. 3

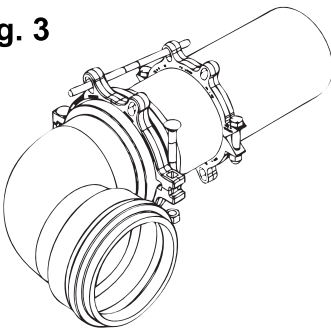
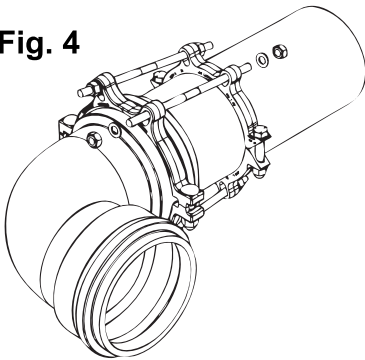


Fig. 4



4. Install the split back-up ring assembly on the fitting behind the gasket race. Use one of the provided connecting rods as a guide to align the ears on the restraint with the back-up ring. Tighten the clamping bolts on the back-up ring to the recommended torque of 150 ft-lbs. **See figure 3.**

5. Insert the remaining connecting rods through the bolt holes on the restraint and the back-up rings. Place a washer against the restraint and the back-up ring ears. Place a nut on each end of the connecting rod.

See figure 4.

6. Tighten the nuts behind the back-up ring and the restraint hand tight plus one revolution. Do not over-tighten the nuts.



The Ford Meter Box Co., Inc. 775 Manchester Avenue, P.O. Box 443, Wabash, Indiana, USA 46992-0443
Telephone: 260/563-3171 FAX: 1-800-826-3487 Overseas FAX: 260/563-0167 <http://www.fordmeterbox.com>