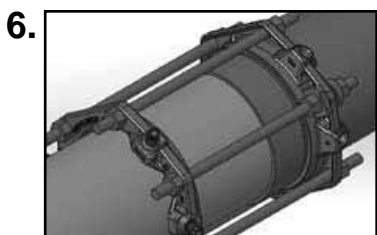
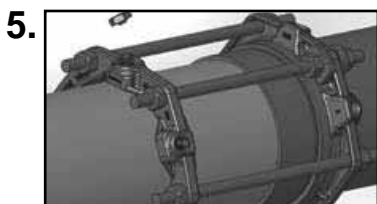
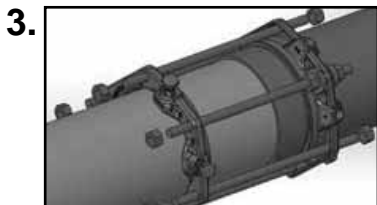
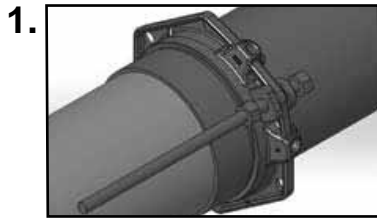


Series UFR1455 3"-8" - Installation Instructions

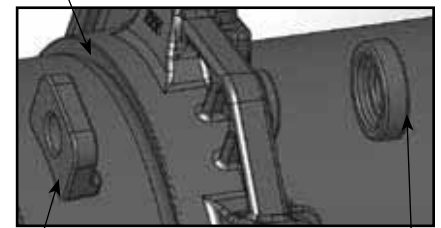
Solid 1400 Joint Restraint with Split Back-Up Ring for Ductile Iron Push-On Joints for New Pipe Installations



1. Back-Up Ring Assembly (Split 1400 without wedges): Loosely assemble the halves of the gland without wedges onto the pipe with the Gland Lip Extension facing toward the back of the pipe bell by installing a connecting rod through the Front Clamp and the Back Connector Plate, placing a nut finger tight on both sides. These nuts will be tightened in Step 3. Assemble the halves with the flat side of the Front Clamp to the outside of the gland half and the flat side of the Back Connector Plate to the outside of the gland as shown in Figure 1. Position the Back-Up Ring Assembly against the pipe bell.

Figure 1

Gland Lip Extension



Flat side of Back
Connector Plate

Flat side of
Clamp

2. Restraint Ring Assembly (1400 with wedges and Auto-Tork Screws): Place the gland with wedges on the spigot end of the pipe with the lip extension toward the face of the pipe bell. Assemble the pipe joint according to pipe manufacturer's recommendations.
3. Using a connecting rod for measurement, position the 1400 restraint ring assembly (with wedges) on the pipe spigot so several threads of the rod extend through the bolt holes of the 1400 when it is connected to the back-up ring (split 1400 without wedges) and install the rods and nuts in each of the bolt holes. Tighten the inside rod nuts against the Back Connector Plates.
4. Bring all wedges in contact with the pipe surface by turning the Auto-Tork actuating screws in a clockwise direction until the screws are hand tight.
5. Tighten each Auto-Tork actuating screw by turning approximately 180° (1/2 turn), alternating among screws until the break away heads twist off. Note: To re-use or re-install after the Auto-Tork break-off heads have been removed; tighten the 5/8" hex head of the actuating screw to 75 ft-lbs. Use of a torque wrench is highly recommended and required to ensure proper torque.
6. Tighten the rod nuts on the restraint ring assembly side (with wedges) until the back-up ring (without wedges) is seated firmly against the back of the pipe bell. Do not over-tighten.

Refer to the FMB website (<http://www.fordmeterbox.com>) for additional and most recent instructions and product information.