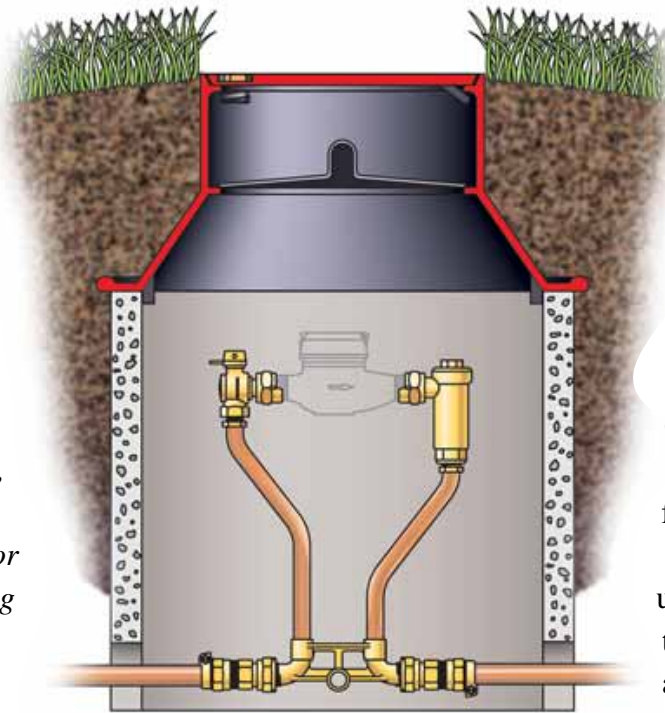


METER PIT DESIGN

This is the first of a two-part series on water meter pit design and maintenance. This Meter Setter covers pit design and installation. Next month we will cover pit maintenance and operation.

Ford meter pit covers, if properly installed, maintained and operated, will provide a safe, secure meter pit setting for many years. The following topics are important considerations for effective meter pit design and installation.



Pit and Cover Design

Pit Size: The meter pit must be deep enough to extend below the deepest frost penetration line. The pit diameter must be large enough to provide a minimum 2-inch clearance between the riser pipes (including valves) and the pit wall. In addition, a general rule allows a minimum 18" ID for 36" through 48" deep pits, and a minimum 20" ID for pits 48" or deeper. The larger diameter pits provide a greater heat source in extremely cold climates.

Cover Style: The Ford hat-shaped style cover minimizes surface exposure while supplying ample access for meter reading and maintenance. The

hat shape also provides ground insulation where the cover rests on the pit tile.

Ford offers inner lids, insulation blankets and insulating disks to further guard against meter pit freezing.

Locking Lids:

Although the Ford Meter Box Company supplies lockless lids, locking lids are recommended for greater security and safety.

Ford locking lids feature a unique "worm" type lock. As the lid opens, the worm rotates and applies a powerful screw-jack action between the lid and

frame to break any seal of ice or dirt. As the lid closes, the worm draws the lid securely to the frame.

Lid Lettering: In addition to lids with standard "WATER METER" lettering, Ford offers lids for "GAS", "SEWER", and "RECLAIMED WATER." Special lettering requests are welcome.

Cover Installation

Setting the Cover: Center the cover on the pit tile; use the positioning lugs that extend from the bottom of the frame. The lugs hold the cover in the proper position.

Back Filling: Fill in soil firmly around the pit, tamping on the top of the cover. To prevent a tripping hazard, make certain the grade is level with the top of the frame.

