



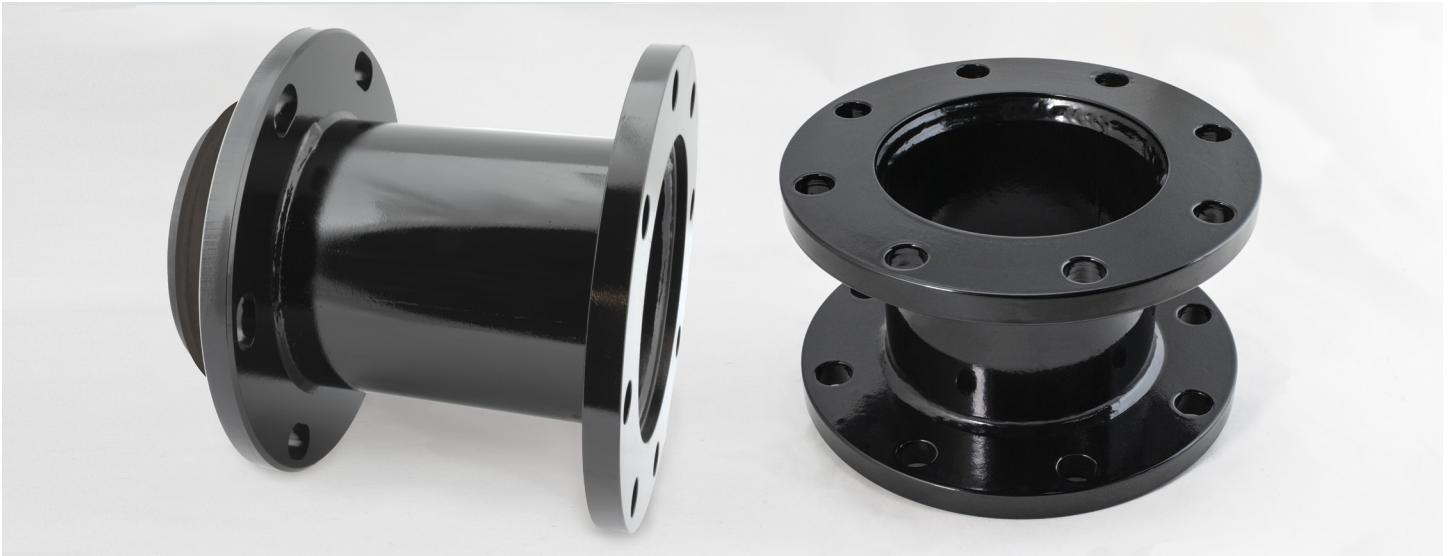
# FORD® PLANT SOLUTIONS

Product Release

08/2022

## Connection Fittings with Multiple End Options

Ford fabricated spools can be manufactured with a plain end (3" - 48"), flange (3" - 48") or MJ Adapter (3" - 24") end combinations, providing the ultimate in custom connection fittings. Available in carbon steel, 304 or 316 stainless steel, along with an option for epoxy coating, Ford can accommodate many custom needs for connection spools.



### Material:

(Blank) = Carbon Steel  
X = 304 Stainless  
Q = 316 Stainless

### End Type:

PE = Plain End  
D = AWWA Class D Flange  
E = AWWA Class E Flange  
F = AWWA Class F Flange  
MJ = MJ Adapter End  
PN10 = PN 10 Flange  
PN16 = PN 16 Flange  
PN25 = PN 25 Flange

### Coating:

(Blank) = \*Black Alkyd  
Enamel Shop  
Coat  
E = Epoxy

**SPOOLX-12PE-12D-L12-E**

### Size:

3" - 48" Plain End or Flanged End  
3" - 24" MJ End

### Length:

\*\*6" - 24"

\* No coating if stainless steel material selected  
\*\* Contact factory for longer spools

**The Ford Meter Box Company, Inc.** 775 Manchester Avenue, P.O. Box 443, Wabash, Indiana, USA 46992-0443  
Telephone: 260-563-3171 FAX: 800-826-3487 Overseas FAX: 260-563-0167 [www.fordmeterbox.com](http://www.fordmeterbox.com)

SPOOL