



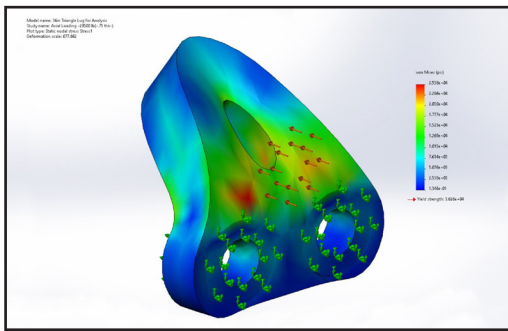
# FORD® PLANT SOLUTIONS

Ford® Flange Lugs

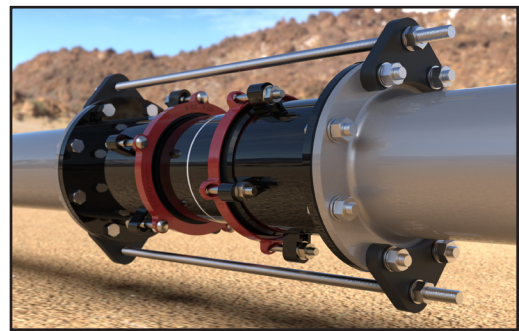
09/2022

## Tie Rod Lug for Restrained Flanged Connections

Also referred to as anchor plates, lug plates, gusset plates or steel tabs, Ford Flange Lugs are a simple way to accommodate for misalignment and restrain couplings, flanged coupling adapters and equipment connection fittings. Manufactured on our state-of-the art waterjet cutting table, Ford Flange Lugs can be supplied in any shape (square, rectangle, 2-hole, 3-hole, 4-hole) up to 4 3/4" thick, while ensuring dimensional accuracy with no heat distortion.



*In-house Finite Element analysis for Design Verification*



*Flange Lugs in action*



**Epoxy Coating**

**Stainless Steel**

### Part Name Example:

**Drilling based on ASME Class**      **Tie Rod Hole Size**      **Material & Coating**

**FL16-150-1-2-CSE**

**Flange Lug**      **Size**      **Thickness**

Size	FMB STD Lug Thk	Possible Lug Quantity
4	3/4	2
16	1	2,4,8
24	1	2,4,5,10
36	1 1/4	2,3,4,6,12,18

*Sizes shown as examples, **all** sizes available, please contact FMB*

### Features:

- Available in 304 or 316 stainless steel, carbon steel (A36), or COR-TEN® weathering steel
- Options of shop coating, fusion bonded epoxy, fluoropolymer based coating, Armourguard e-coat or uncoated
- Available in designs compatible with all classes of AWWA C207/228 flanges, AWWA C111 Class 125/250 flanges as well as ASME & ISO flanges

**The Ford Meter Box Company, Inc.** 775 Manchester Avenue, P.O. Box 443, Wabash, Indiana, USA 46992-0443  
Telephone: 260-563-3171 FAX: 800-826-3487 Overseas FAX: 260-563-0167 [www.fordmeterbox.com](http://www.fordmeterbox.com)