

FORD PLASTIC PIT SETTERS

SECTION FA

Ford Plastic Pit Setter Numbering System

TYPE OF PLASTIC SETTER

PS = Standard for Single Lid Cover

PD = Standard for Double Lid Cover

PF = Standard for Flat Lid Cover

***PTS** = Tandem for Single Lid Cover

***PTD** = Tandem for Double Lid Cover

***PDS** = Dual Service for Single Lid Cover

***PDD** = Dual Service for Double Lid Cover

PM = Pit Setter for Monitor Cover

(36" tile size only)

* 20" pit recommended for 5/8"-3/4" meters. Not recommended for 1" meters.

INLET VALVE TYPE

****B** = Angle Ball Valve

V = Angle Key Valve

‡G = Angle Compression Valve

METER SIZE

(INLET - OUTLET SIZE)

1 = 5/8" (3/4")

2 = 5/8" x 3/4" (3/4")

3 = 3/4" (3/4")

4 = 1" (1")

6 = 1-1/2" (1-1/2")

7 = 2" (2")

(The number in parentheses is the standard inlet-outlet size for a given meter size.)

PIT DIAMETER AND DEPTH

±18-36 = 18" x 36"

±18-48 = 18" x 48"

±18-60 = 18" x 60"

±18-72 = 18" x 72"

20-36 = 20" x 36"

20-48 = 20" x 48"

20-60 = 20" x 60"

20-72 = 20" x 72"

†36HB-36 = 36" x 36"

†36HB-42 = 36" x 42"

†36HB-48 = 36" x 48"

†36HB-54 = 36" x 54"

†36HB-60 = 36" x 60"

†36HB-66 = 36" x 66"

†36HB-72 = 36" x 72"

†36HB-78 = 36" x 78"

± Not available for 3/4" or 1" meters.

† Available only for 1-1/2" and 2" meters.

P S B H - 2 2 2 - 1 8 - 7 2 - N L

OUTLET VALVE TYPE

****B** = Angle Ball Valve

V = Angle Key Valve

‡G = Angle Compression Valve

H = Angle Check Valve

*****ΔHH** = Angle Cascading Dual Check Valve

*****‡HC** = Angle Cartridge Dual Check Valve

‡ Not available with 1-1/2" and 2" pit setters.

Δ Angle cascading dual check valve contains 3/4" internal components. This valve meets the ASSE flow requirements of a 1" valve. For a full port valve order the cartridge style check valve.

** The 5/8" port angle ball valve is a one-way directional valve designed for the inlet of the meter and should not be used as a customer shut-off on the customer side of the meter. 5/8" x 3/4", 3/4" and 1" setters with angle ball valves will be reduced port unless otherwise specified. Reduced port valves usually provide suitable water flow. Add "-FP" to the end of catalog number for full port.

*** Dual check valves with enhanced chlorine/chloramine resistance are available. Add "**CR**" to the end of the alpha code. Example: PSBHCCR-344-20-36-NL. CR style dual checks not available with 1-1/2" and 2" pit setters.

TYPES OF INLET-OUTLET (One End - Other End)

‡2 = Flare Copper Tube Nut

‡4 = Pack Joint for Plastic or Copper Tube (CTS)

8 = Male Iron Pipe Threads

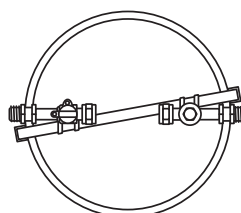
NO-LEAD

OPTIONS

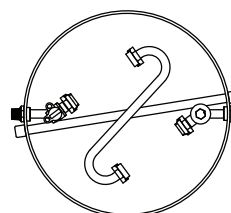
Add "**-G**" to the end of the catalog number for Grip Joint for CTS. Example: PSBH-244-18-72-G-NL

Add "**-TP6**" for 1-1/2" integral test port on dual check valve for 1-1/2" and 2" pit setters with a shut-off valve below the dual check valve.

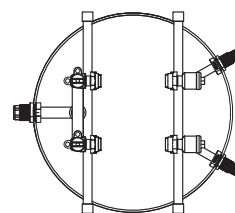
For 12" adjustable pit extension, add "**E**" and the pit height range to the part number. Example: PSBH-222-18E-60-72-NL



Standard Setting



Tandem Setting



Dual Setting

1-1/2" and 2" pit setters with angle ball inlet valve are available with expanding meter flange. Add "**-EXP**" to the end of catalog number. Example: PSBH-777-36HB-36-EXP-NL

Note: See item listings in catalog section to ensure that desired sizes and options are available. Contact factory for other tile options

F
A

PIT SETTER FOR 5/8" OR 5/8" X 3/4" METER

1. What type of pit setting is required?
- +
2. What type of inlet valve is required?
- +
3. What type of outlet valve is required?
- +
- (insert dash)
4. What meter size is required?
- +
5. What type of inlet connection is required?
- (see note below)
- +
6. What type of outlet connection is required?
- (see note below)
- +
- (insert dash)
7. What pit diameter and depth is required?
- (Depth is measured from ground level to service line.
The service line is 2" higher than bottom of pit setter.)

| SETTING TYPE | CODE | PRICE |
|--|------|-----------|
| Standard for Single Lid Cover | PS | \$ 859.23 |
| Standard for Double Lid Cover | PD | 792.30 |
| * Tandem for Single Lid Cover | PTS | 1008.41 |
| * Tandem for Double Lid Cover | PTD | 941.41 |
| * Dual Service Line for Single Lid Cover | PDS | Δ |
| * Dual Service Line for Double Lid Cover | PDD | Δ |

| INLET VALVE TYPE | CODE | PRICE |
|---------------------------|------|----------|
| Angle Key Valve | V | Standard |
| ▼ Angle Ball Valve | B | 15.06 |
| Angle Compression Valve | G | 19.47 |
| No Inlet Valve (subtract) | - | -69.81 |

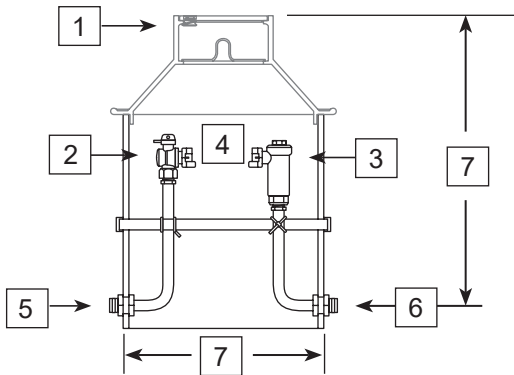
| OUTLET VALVE TYPE | CODE | PRICE |
|------------------------------------|------|----------|
| Angle Key Valve (subtract) | V | -6.86 |
| ***▼ Angle Ball Valve | B | 8.28 |
| Angle Compression Valve | G | 12.29 |
| Angle Check Valve | H | Standard |
| ● Angle Cascading Dual Check Valve | HH | 64.43 |
| ● Angle Cartridge Dual Check Valve | HC | 78.20 |
| No Outlet Valve (subtract) | - | -77.04 |

| METER SIZE | CODE | PRICE |
|---------------------|------|----------|
| 5/8" Meter | 1 | Standard |
| □ 5/8" x 3/4" Meter | 2 | Standard |

| 3/4" INLET TYPE | CODE | PRICE |
|--------------------|------|----------|
| Flared Copper | 2 | 16.50 |
| PET/CTS Pack Joint | 4 | 17.45 |
| Male Iron Pipe | 8 | Standard |

| 3/4" OUTLET TYPE | CODE | PRICE |
|--------------------|------|----------|
| Flared Copper | 2 | 16.50 |
| PET/CTS Pack Joint | 4 | 17.45 |
| Male Iron Pipe | 8 | Standard |

| PIT DIAMETER AND DEPTH | SMOOTH WALL TILE | | CORRUGATED TILE | |
|------------------------|------------------|------------|-----------------|------------|
| | CODE | LIST PRICE | CODE | LIST PRICE |
| 18" x 36" | 18-36-NL | Standard | 18C-36-NL | \$ 55.83 |
| 18" x 48" | 18-48-NL | \$ 144.06 | 18C-48-NL | 218.49 |
| 18" x 60" | 18-60-NL | 288.20 | 18C-60-NL | 381.25 |
| 18" x 72" | 18-72-NL | 432.29 | 18C-72-NL | 543.90 |
| 20" x 36" | 20-36-NL | 47.87 | **20C-36-NL | 140.54 |
| 20" x 48" | 20-48-NL | 170.45 | **20C-48-NL | 294.06 |
| 20" x 60" | 20-60-NL | 327.97 | **20C-60-NL | 482.46 |
| 20" x 72" | 20-72-NL | 485.33 | **20C-72-NL | 670.74 |



HOW TO ORDER A PLASTIC PIT SETTER:

Answer each question to create a catalog number. The catalog codes will build the plastic pit setter that meets your setting requirements. To price, add the price of the codes together.

PART NUMBER EXAMPLE:

PSBH-222-18-72-NL = A standard single lid style plastic pit setter with an inlet angle ball valve, outlet angle check valve, 5/8" x 3/4" meter, inlet connection for flared copper, outlet connection for flared copper and a pit diameter and depth of 18" x 72".

PSBH-222-18-72-NL PRICE EXAMPLE:

\$ 859.23 + 15.06 + 0.00 + 0.00 + 16.50 + 16.50 + 432.29 = \$ 1339.58

Note: Inlet and outlet connections are 3/4" in size, for 5/8", and 5/8" x 3/4" meter settings on 5/8" x 3/4" dual setters, inlet will be 1" with two 3/4" outlets, unless otherwise specified.

Female iron pipe by Pack Joint couplings are available for a variety of inlet/outlet combinations (see section J) and are sold separately.

Contact factory for other pit diameters and types not listed.

* 20" pit diameter is recommended for tandem and dual settings.

Δ Contact Ford Customer Service for pricing.

NOTE: Prices above do not include covers which are listed in section D.

Grip Joint for CTS and PEP can be ordered by inserting "-G" into the catalog number.

Example: PSBH244-18-72-G-NL

** Pit setters manufactured from 20" corrugated tile require Ford Iron Covers for 21" I.D. Tile.

*** The 5/8" port angle ball valve is a one-way directional valve designed for the inlet side of the meter and should not be used as a customer shut-off on the customer side of the meter.

□ 1" inlet on 5/8" x 3/4" dual setters.

▼ Setters with angle ball valve inlets will be reduced port unless otherwise requested.

Reduced port valves usually provide suitable water flow. (Add "-FP" to the end of the catalog number for full port.) Add to price \$ 74.71

If ordering full port ball valve inlet and outlet, add to price \$ 149.43

● Dual check valves for 5/8" or 5/8" x 3/4" meter setters with enhanced chlorine/chloramine resistance are available. Add "CR" to the end of the alpha code.

Example: PSBHCCR-188-20-36-NL. Add to price for cartridge style \$ 39.02

Add to price for cascading style \$ 19.04

PIT SETTER FOR 3/4" METER

1. What type of pit setting is required?

+

2. What type of inlet valve is required?

+

3. What type of outlet valve is required?

+ (insert dash)

4. What meter size is required?

+

5. What type of inlet connection is required?
(see note below)

+

6. What type of outlet connection is required?
(see note below)

+ (insert dash)

7. What pit diameter and depth is required?
(Depth is measured from ground level to service line.
The service line is 2" higher than bottom of pit setter.)

| SETTING TYPE | CODE | PRICE |
|-------------------------------|------|-----------|
| Standard for Single Lid Cover | PS | \$ 920.41 |
| Standard for Double Lid Cover | PD | 853.39 |
| Tandem for Single Lid Cover | PTS | 1069.69 |
| Tandem for Double Lid Cover | PTD | 1002.57 |

| INLET VALVE TYPE | CODE | PRICE |
|---------------------------|------|----------|
| Angle Key Valve | V | Standard |
| ▼ Angle Ball Valve | B | 15.06 |
| Angle Compression Valve | G | 19.47 |
| No Inlet Valve (subtract) | - | -66.52 |

| OUTLET VALVE TYPE | CODE | PRICE |
|------------------------------------|------|----------|
| Angle Key Valve (subtract) | V | -6.86 |
| ▼ Angle Ball Valve | B | 8.28 |
| Angle Compression Valve | G | 12.00 |
| Angle Check Valve | H | Standard |
| • Angle Cascading Dual Check Valve | HH | 64.43 |
| • Angle Cartridge Dual Check Valve | HC | 78.20 |
| No Outlet Valve (subtract) | - | -77.04 |

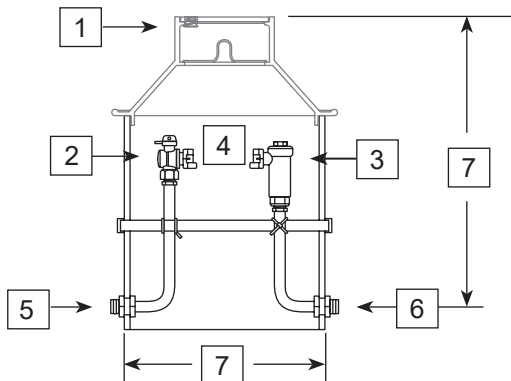
| METER SIZE | CODE | PRICE |
|------------|------|----------|
| 3/4" Meter | 3 | Standard |

| 3/4" INLET TYPE | CODE | PRICE |
|--------------------|------|----------|
| Flared Copper | 2 | 16.50 |
| PET/CTS Pack Joint | 4 | 17.45 |
| Male Iron Pipe | 8 | Standard |

| 3/4" OUTLET TYPE | CODE | PRICE |
|--------------------|------|----------|
| Flared Copper | 2 | 16.50 |
| PET/CTS Pack Joint | 4 | 17.45 |
| Male Iron Pipe | 8 | Standard |

| PIT DIAMETER AND DEPTH | SMOOTH WALL TILE | | **CORRUGATED TILE | |
|------------------------|------------------|------------|-------------------|------------|
| | CODE | LIST PRICE | CODE | LIST PRICE |
| 20" x 36" | 20-36-NL | Standard | 20C-36-NL | \$ 92.70 |
| 20" x 48" | 20-48-NL | \$ 170.45 | 20C-48-NL | 294.06 |
| 20" x 60" | 20-60-NL | 327.97 | 20C-60-NL | 482.46 |
| 20" x 72" | 20-72-NL | 485.33 | 20C-72-NL | 670.74 |

F
A



Contact factory for other pit diameters and types not listed.

NOTE: Prices above do not include covers which are listed in section D.

Grip Joint for CTS and PEP can be ordered by inserting "-G" into the catalog number. Example: PSBH344-20-72-G-NL

** Pit setters manufactured from 20" corrugated tile require Ford Iron Covers for 21" I.D. Tile.

▼ Setters with angle ball valve inlets will be reduced port unless otherwise requested. Reduced port valves usually provide suitable water flow. (Add "-FP" to the end of the catalog number for full port.) Add to price. \$ 74.71
If ordering full port ball valve inlet and outlet:

Add to price. \$ 149.43

• Dual check valves for 3/4" meter setters with enhanced chlorine/chloramine resistance are available. Add "CR" to the end of the alpha code.

Ex: PSBHCCR-388-20-36-NL

Add to price for cartridge style \$ 39.02

Add to price for cascading style \$ 19.04

HOW TO ORDER A PLASTIC PIT SETTER:

Answer each question to create a catalog number. The catalog codes will build the **plastic pit setter** that meets your setting requirements. To price, add the prices of the codes together.

PART NUMBER EXAMPLE:

PSBH-322-20-72-NL = A standard single lid style plastic pit setter with an inlet angle ball valve, outlet angle check valve, 3/4" meter, inlet connection for flared copper, outlet connection for flared copper and a pit diameter and depth of 20" x 72". Valves and fittings in contact with potable water are of no-lead alloy.

PSBH-322-20-72-NL PRICE EXAMPLE:

\$ 920.41 + 15.06 + 0.00 + 0.00 + 16.50 + 16.50 + 485.33 = \$ 1453.80

Note: Inlet and outlet connections are 3/4" in size, for 3/4" meter settings, unless otherwise specified.

Female iron pipe by Pack Joint couplings are available for a variety of inlet/outlet combinations (see section J) and are sold separately.

PIT SETTER FOR 1" METER

1. What type of pit setting is required?

| SETTING TYPE | CODE | PRICE |
|-------------------------------|------|------------|
| Standard for Single Lid Cover | PS | \$ 1106.52 |
| Standard for Double Lid Cover | PD | 1035.70 |

+

2. What type of inlet valve is required?

| INLET VALVE TYPE | CODE | PRICE |
|---------------------------|------|----------|
| Angle Key Valve | V | Standard |
| ▼ Angle Ball Valve | B | 63.32 |
| No Inlet Valve (subtract) | - | -60.00 |

+

3. What type of outlet valve is required?

| OUTLET VALVE TYPE | CODE | PRICE |
|-------------------------------------|------|----------|
| Angle Key Valve (subtract) | V | -13.88 |
| ▼ Angle Ball Valve | B | 82.98 |
| Angle Check Valve | H | Standard |
| ● Angle Cartridge Dual Check Valve | HC | 176.69 |
| ●△ Angle Cascading Dual Check Valve | HH | 64.43 |
| No Outlet Valve (subtract) | - | -46.16 |

+ (insert dash)

4. What meter size is required?

| METER SIZE | CODE | PRICE |
|------------|------|----------|
| 1" Meter | 4 | Standard |

+

5. What type of inlet connection is required?
(see note below)

| 1" INLET TYPE | CODE | PRICE |
|----------------|------|----------|
| Male Iron Pipe | 8 | Standard |

+

6. What type of outlet connection is required?
(see note below)

| 1 " OUTLET TYPE | CODE | PRICE |
|-----------------|------|----------|
| Male Iron Pipe | 8 | Standard |

+ (insert dash)

7. What pit diameter and depth is required?
(Depth is measured from ground level to service line.
The service line is 2" higher than bottom of pit setter.)

| PIT DIAMETER AND DEPTH | SMOOTH WALL TILE | | **CORRUGATED TILE | |
|------------------------|------------------|------------|-------------------|------------|
| | CODE | LIST PRICE | CODE | LIST PRICE |
| 20" x 36" | 20-36-NL | Standard | 20C-36-NL | \$ 92.70 |
| 20" x 48" | 20-48-NL | \$ 215.14 | 20C-48-NL | 338.76 |
| 20" x 60" | 20-60-NL | 438.85 | 20C-60-NL | 593.33 |
| 20" x 72" | 20-72-NL | 662.57 | 20C-72-NL | 847.93 |

Contact factory for other pit diameters and types not listed.

NOTE: Prices above do not include covers which are listed in section D.

** Pit setters manufactured from 20" corrugated tile require Ford Iron Covers for 21" I.D. Tile.

▼ Setters with angle ball valve inlets will be reduced port unless otherwise requested. Reduced port valves usually provide suitable water flow.
(Add "-FP" to the end of the catalog number for full port.)

Add to price \$ 67.31

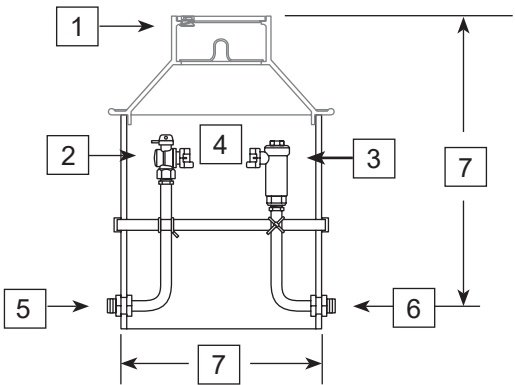
If ordering full port ball valve inlet and outlet add to price. \$ 134.60

● Dual check valves for 1" meter setters with enhanced chlorine/chloramine resistance are available. Add "CR" to the end of the alpha code.

Ex: PSBHCCR-488-20-60-NL. Add to price for cartridge style \$ 49.47

Add to price for cascading style \$ 19.04

△ Angle cascading dual check valve contains 3/4" internal components. This valve meets the ASSE flow requirements of a 1" valve. For a full port valve order the cartridge style check valve.



HOW TO ORDER A PLASTIC PIT SETTER:

Answer each question to create a catalog number. The catalog codes will build the plastic pit setter that meets your setting requirements.
To price, add the prices of the codes together.

PART NUMBER EXAMPLE:

PSBH-488-20-60-NL = A standard single lid style plastic pit setter with an inlet angle ball valve, outlet angle check valve, 1" meter, inlet connection for male iron pipe, outlet connection for male iron pipe and a pit diameter and depth of 20" x 60". Valves and fittings in contact with potable water are of no-lead alloy.

PSBH-488-20-60-NL PRICE EXAMPLE:

\$ 1106.52 + \$ 63.32 + 0.00 + 0.00 + 0.00 + 0.00 + \$ 438.85 = \$ 1608.69

Note: Inlet and outlet connections are 1" in size, for 1" meter settings, unless otherwise specified.

Female iron pipe by Pack Joint couplings are used to provide 1" PET, PEP or PVC inlet-outlet combinations (see section J) and are sold separately.

PIT SETTER FOR 1-1/2" AND 2" METER

1. What type of pit setting is required?

+

2. What type of inlet valve is required?

+(insert dash)

3. What type of outlet valve is required?

+(insert dash)

4. What meter size is required?

+

5. What type of inlet connection is required?

+(see note below)

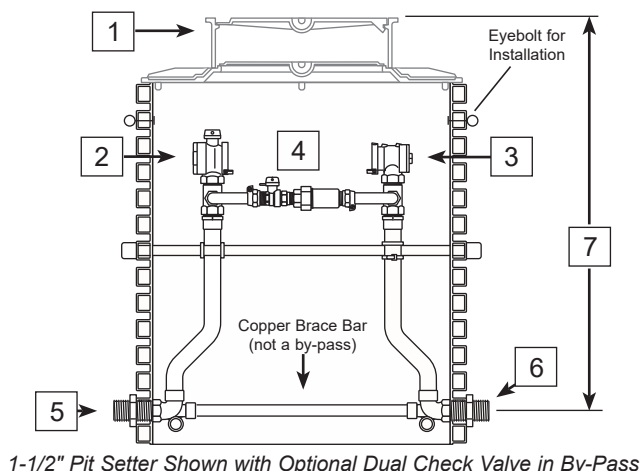
6. What type of outlet connection is required?

+(see note below)

+(insert dash)

7. What pit depth is required?

(Depth is measured from ground level to service line.
The service line is 4" higher than bottom of pit setter.)



1-1/2" Pit Setter Shown with Optional Dual Check Valve in By-Pass

HOW TO ORDER A PLASTIC PIT SETTER:

Answer each question to create a catalog number. The catalog codes will build the **plastic pit setter** that meets your setting requirements. To price, add the prices of the codes together.

PART NUMBER EXAMPLE:

PMBHH-688-36HB-60-NL = A standard monitor cover style plastic pit setter with an inlet angle ball valve, outlet angle dual check valve, 1-1/2" meter, inlet connection for male iron pipe, outlet connection for male iron pipe, high by-pass and a pit diameter and depth of 36" x 60". Valves and fittings in contact with potable water are of no-lead alloy.

PRICE EXAMPLE:

PMBHH-688-36HB-60-NL price is: \$ 4520.55 + \$ 154.50 + \$ 209.47 + 0.00 + 0.00 + 0.00 + \$ 989.46 = \$ 5873.98

Note: Inlet and outlet connections are 1-1/2" in size, for 1-1/2" meter settings, 2" for 2" meters.

Meter spacing is 17" for 2" meters, 13" for 1-1/2" meters.

Female iron pipe by Pack Joint couplings are used to provide PET, PEP or PVC inlet-outlet combinations (see section J) and are sold separately.

* Meter flange S-tube is supplied. Provide PRV length and connection type with order. PRV adapters are sold separately.

** 36" high tandem not available with high by-pass for 2" meters.

| SETTING TYPE | CODE | PRICE | |
|-------------------------------|------|---------------|------------|
| | | 1-1/2" SETTER | 2" SETTER |
| Standard for Monitor Cover | PM | \$ 4520.55 | \$ 5032.51 |
| Standard for Single Lid Cover | PS | 4624.86 | 5136.86 |
| Standard for Double Lid Cover | PD | 4450.95 | 4962.89 |
| * Tandem for Monitor Cover | PTM | 5554.85 | 6118.60 |
| * Tandem for Single Lid Cover | PTS | 5659.28 | 6222.93 |
| * Tandem for Double Lid Cover | PTD | 5485.28 | 6049.02 |

| INLET VALVE TYPE | CODE | 1-1/2" SETTER | 2" SETTER |
|------------------|------|---------------|-----------|
| Angle Key Valve | V | Standard | Standard |
| Angle Ball Valve | B | 154.50 | 116.05 |

| OUTLET VALVE TYPE | CODE | 1-1/2" SETTER | 2" SETTER |
|--------------------------|------|---------------|-----------|
| Angle Ball Valve | B | 109.45 | 75.71 |
| Angle Key Valve | V | -45.05 | -40.33 |
| Angle Check Valve | H | Standard | Standard |
| Angle Dual Check Valve | HH | 209.47 | 91.10 |
| Flanged Ell (no by-pass) | L | -204.69 | -269.76 |

| METER SIZE | CODE | 1-1/2" SETTER | 2" SETTER |
|--------------|------|---------------|-----------|
| 1-1/2" Meter | 6 | Standard | N/A |
| 2" Meter | 7 | N/A | Standard |

| INLET TYPE | CODE | 1-1/2" SETTER | 2" SETTER |
|----------------|------|---------------|-----------|
| Male Iron Pipe | 8 | Standard | Standard |

| OUTLET TYPE | CODE | 1-1/2" SETTER | 2" SETTER |
|----------------|------|---------------|-----------|
| Male Iron Pipe | 8 | Standard | Standard |

| APPROX. PIT DIAMETER AND DEPTH | CODE | 1-1/2" SETTER | 2" SETTER |
|--------------------------------|------------|---------------|-----------|
| ** 36" x 36" | 36HB-36-NL | Standard | Standard |
| 36" x 42" | 36HB-42-NL | \$ 249.54 | \$ 269.77 |
| 36" x 48" | 36HB-48-NL | 468.80 | 514.54 |
| 36" x 54" | 36HB-54-NL | 769.24 | 838.26 |
| 36" x 60" | 36HB-60-NL | 989.46 | 1081.77 |
| 36" x 66" | 36HB-66-NL | 1333.07 | 1460.31 |
| 36" x 72" | 36HB-72-NL | 1510.11 | 1648.95 |
| 36" x 78" | 36HB-78-NL | 1853.81 | 2027.56 |

NOTE: Prices above do not include covers and extension rings which are listed in catalog section D.

1-1/2" and 2" pit setters are standard with a high by-pass. (2" pit setters have the by-pass opposite side from the side shown.) The by-pass can be deleted by omitting the "HB" from the catalog number and deducting \$ -537.45 from the price. Example: PMBHH-688-36-60-NL

For optional dual cartridge check valve in by-pass, insert "HC" into the catalog number and add \$ 428.90 to the price. Example: PMBHH-688-36HBHC-60-NL

Optional test port for dual check 1-1/2" and 2" pit setters is available. See page F-37 of catalog for more information.

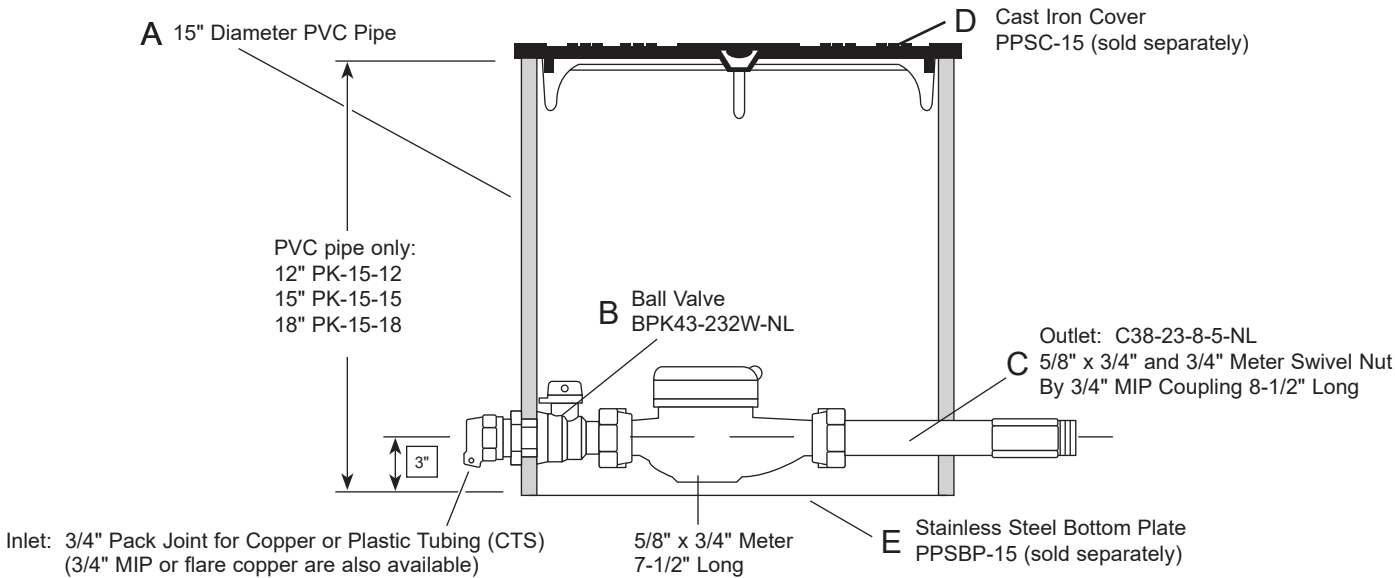
1-1/2" and 2" setters with angle ball inlet valve are available with expanding meter flange.. Add "-EXP" to end of catalog number.

Example: PSBH-777-36HB-36-EXP-NL

For 1-1/2" setters, add to price \$ 45.44

For 2" setters, add to price..... \$50.07

STANDARD 15" DIAMETER STYLE "K" PIT SETTER
FOR 5/8" X 3/4" METERS
(For Moderate Climates)



3/4" MALE IRON PIPE THREAD INLET BY 3/4" MALE IRON PIPE THREAD OUTLET

| CATALOG NUMBER | DESCRIPTION | WEIGHT | LIST PRICE |
|----------------|---|--------|------------|
| PK288-15-12-NL | 12" High Pit Setter (less lid and bottom plate) | - | \$ 434.95 |
| PK288-15-15-NL | 15" High Pit Setter (less lid and bottom plate) | - | 454.44 |
| PK288-15-18-NL | 18" High Pit Setter (less lid and bottom plate) | - | 474.03 |

3/4" FLARED COPPER INLET BY 3/4" MALE IRON PIPE THREAD OUTLET

| CATALOG NUMBER | DESCRIPTION | WEIGHT | LIST PRICE |
|----------------|---|--------|------------|
| PK228-15-12-NL | 12" High Pit Setter (less lid and bottom plate) | - | \$ 450.94 |
| PK228-15-15-NL | 15" High Pit Setter (less lid and bottom plate) | - | 470.52 |
| PK228-15-18-NL | 18" High Pit Setter (less lid and bottom plate) | - | 490.17 |

3/4" PACK JOINT FOR COPPER OR PLASTIC TUBING INLET BY 3/4" MALE IRON PIPE THREAD OUTLET

| CATALOG NUMBER | DESCRIPTION | WEIGHT | LIST PRICE |
|----------------|---|--------|------------|
| PK248-15-12-NL | 12" High Pit Setter (less lid and bottom plate) | - | \$ 459.55 |
| PK248-15-15-NL | 15" High Pit Setter (less lid and bottom plate) | - | 479.13 |
| PK248-15-18-NL | 18" High Pit Setter (less lid and bottom plate) | - | 498.75 |

Grip Joint for CTS can be ordered by adding "-G" to the catalog number.

COMPONENTS FOR STANDARD 15" "K" PIT SETTER

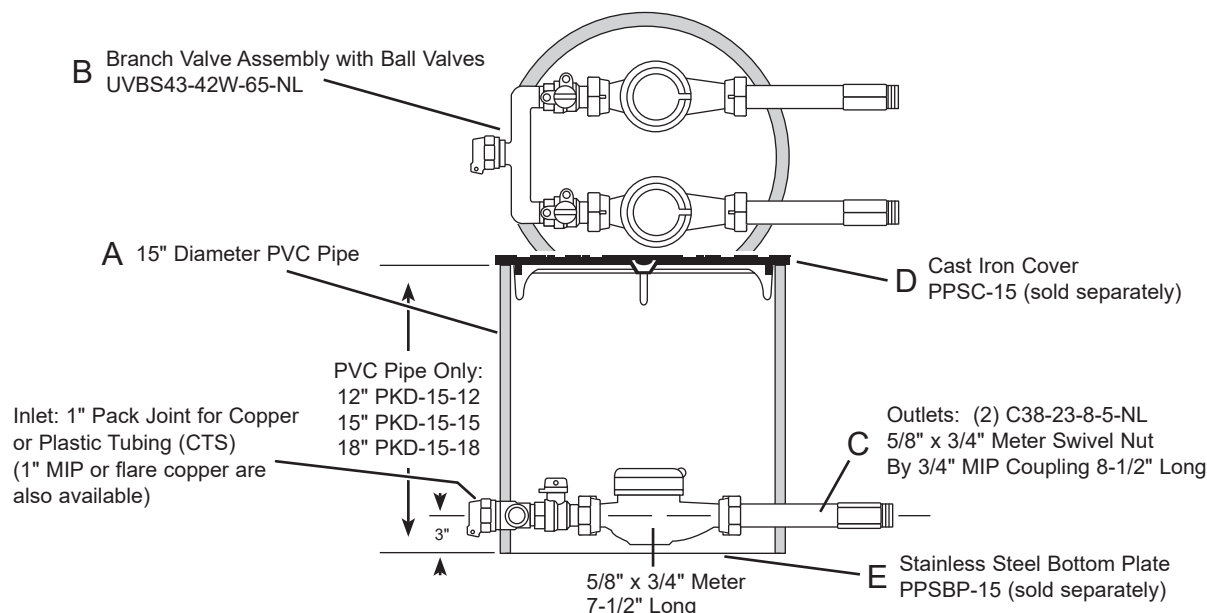
| CATALOG NUMBER | COMPONENT CATEGORY | DESCRIPTION | LIST PRICE |
|---------------------------|--------------------|---|------------|
| PK-15-12 | A | Plastic Pit Only - 12" High | \$ 216.60 |
| PK-15-15 | A | Plastic Pit Only - 15" High | 237.35 |
| PK-15-18 | A | Plastic Pit Only - 18" High | 258.14 |
| BPK83-232W-NL | B | Ball Valve for 3/4" Male Iron Pipe | 117.17 |
| BPK23-232W-NL | B | Ball Valve for 3/4" Flared Copper | 133.20 |
| * BPK43-232W-NL | B | Ball Valve for 3/4" Pack Joint for Copper or Plastic Tubing (CTS) | 141.70 |
| C38-23-8-5-NL | C | 5/8" x 3/4" Meter Swivel Nut x 3/4" Male Iron Pipe Coupling - 8-1/2" Long | 59.99 |
| ** PPSC-15 | D | Flat Cast Iron Lid | 105.03 |
| PPSBP-15 | E | Stainless Steel Bottom Plate | 173.62 |
| PPSBP-15-P | E | Plastic Bottom Plate | 125.73 |
| Add "R" to Catalog Number | | 360-Degree Turn Ball Valve | 2.49 |

* Grip Joint for CTS can be ordered by inserting "-G" into the catalog number. Example: BPK43-232W-G-NL

COMPONENT PARTS IN CATEGORIES A, B, AND C ARE STANDARD. COMPONENTS IN CATEGORIES D AND E AS WELL AS 360-DEGREE TURNING BALL VALVES ARE OPTIONAL AND MUST BE ORDERED SEPARATELY.

** Lid options listed in section D.

STANDARD 15" DIAMETER STYLE "K" PIT SETTER FOR DUAL 5/8" X 3/4" METER SETTING



1" MALE IRON PIPE THREAD INLET BY 3/4" MALE IRON PIPE THREAD OUTLETS

| CATALOG NUMBER | DESCRIPTION | WEIGHT | LIST PRICE |
|-----------------|---|--------|------------|
| PKD288-15-12-NL | 12" High Pit Setter (less lid and bottom plate) | - | \$ 639.71 |
| PKD288-15-15-NL | 15" High Pit Setter (less lid and bottom plate) | - | 651.86 |
| PKD288-15-18-NL | 18" High Pit Setter (less lid and bottom plate) | - | 678.93 |

1" FLARED COPPER INLET BY 3/4" MALE IRON PIPE THREAD OUTLETS

| CATALOG NUMBER | DESCRIPTION | WEIGHT | LIST PRICE |
|-----------------|---|--------|------------|
| PKD228-15-12-NL | 12" High Pit Setter (less lid and bottom plate) | - | \$ 643.98 |
| PKD228-15-15-NL | 15" High Pit Setter (less lid and bottom plate) | - | 663.55 |
| PKD228-15-18-NL | 18" High Pit Setter (less lid and bottom plate) | - | 683.20 |

1" PACK JOINT FOR COPPER OR PLASTIC TUBING INLET BY 3/4" MALE IRON PIPE THREAD OUTLETS

| CATALOG NUMBER | DESCRIPTION | WEIGHT | LIST PRICE |
|-----------------|---|--------|------------|
| PKD248-15-12-NL | 12" High Pit Setter (less lid and bottom plate) | - | \$ 656.88 |
| PKD248-15-15-NL | 15" High Pit Setter (less lid and bottom plate) | - | 668.93 |
| PKD248-15-18-NL | 18" High Pit Setter (less lid and bottom plate) | - | 688.52 |

COMPONENTS FOR STANDARD 15" "K" PIT SETTER

| CATALOG NUMBER | COMPONENT CATEGORY | DESCRIPTION | LIST PRICE |
|---------------------------|--------------------|---|------------|
| PKD-15-12 | A | Plastic Pit Only - 12" High | \$ 216.60 |
| PKD-15-15 | A | Plastic Pit Only - 15" High | 237.35 |
| PKD-15-18 | A | Plastic Pit Only - 18" High | 258.14 |
| UVBS23-42W-65-NL | B | Branch Valve Assembly 6-1/2" Spacing w/ Ball Valves 1" Flared Copper to 5/8" x 3/4" Meter Swivel Nut | 284.53 |
| * UVBS43-42W-65-NL | B | Branch Valve Assembly 6-1/2" Spacing w/ Ball Valves 1" Copper Pack Joint to 5/8" x 3/4" Meter Swivel Nut | 287.98 |
| UVBS83-42W-65-NL | B | Branch Valve Assembly 6-1/2" Spacing w/ Ball Valves 1" Male Iron Pipe to 5/8" x 3/4" Meter Swivel Nut | 269.95 |
| C38-23-8-5-NL | C | 5/8" x 3/4" Meter Swivel Nut x 3/4" Male Iron Pipe Coupling - 8-1/2" Long | 59.99 |
| ** PPSC-15 | D | Flat Cast Iron Lid | 105.03 |
| PPSBP-15 | E | Stainless Steel Bottom Plate | 173.62 |
| PPSBP-15-P | E | Plastic Bottom Plate | 125.73 |
| Add "R" to Catalog Number | | 360 Degree Turn Ball Valve | 2.49 |

* Grip Joint for CTS can be ordered by inserting "-G" into the catalog number. Example: UVBS43-42W-65-G-NL

COMPONENT PARTS IN CATEGORIES A, B, AND C ARE STANDARD. COMPONENTS IN CATEGORIES D AND E AS WELL AS 360-DEGREE TURNING BALL VALVES ARE OPTIONAL AND MUST BE ORDERED SEPARATELY.

** Lid options listed in catalog section D.

F
A

Ford Coil Pit Setter Numbering System

TYPE OF PLASTIC COIL PIT SETTER
PFC = Standard Single Setting
PDFC = Dual Setting (5/8" x 3/4", 18" tile only)
PTFC = Tandem Setting

INLET VALVE TYPE
V = Angle Key Valve
* B = Angle Ball Valve

METER SIZE (INLET - OUTLET SIZE)
1 = 5/8" (3/4")
2 = 5/8" x 3/4" (3/4")
3 = 3/4" (3/4")
4 = 1" (1")
(The number in the parentheses is the standard inlet-outlet size for a given meter size.)

DEPTH
36"
42"
48"
54"
60"
66"
72"
78"
84"
90"
96"

OUTLET VALVE TYPE
V = Angle Key Valve
* B = Angle Ball Valve
H = Angle Check Valve
** Δ HH = Angle Cascading Dual Check Valve
** HC = Angle Cartridge Dual Check Valve
L = ELL (no valve)

TYPE OF INLET - OUTLET
8 = Male Iron Pipe Threads

TILE DIAMETER
15 = 15"
18 = 18"

FULL PORT BALL VALVE
NO-LEAD

PFCBHH-288-15-72A-FP-NL

Optional 1" tubing and MIP service connections for 5/8", 5/8" x 3/4" and 3/4" setters - NOT AVAILABLE on 15" tiles or dual settings.

OPTIONAL

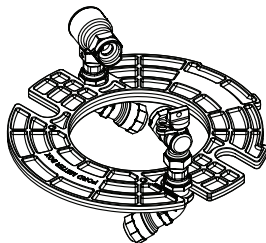
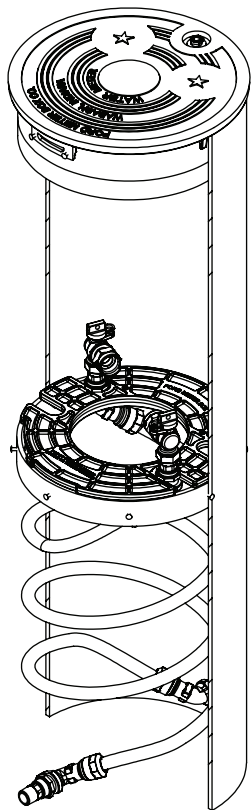
For 12" adjustable pit extension, add "E" and the pit height range to the part number. Example: PFCBH-288-18E-60-72-NL

* The 5/8" Port Angle Ball Valve is a one-way directional valve designed for the inlet side of the meter and should not be used as a customer shut-off on the customer side of the meter. 5/8"x3/4", 3/4" and 1" setters with angle ball valves will be reduced port unless otherwise specified. Reduced port valves usually provide suitable water flow. Add "-FP" to end of catalog number for full port.

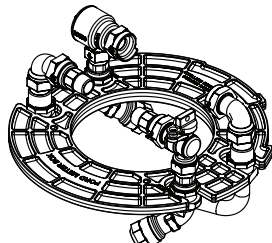
Δ 1" angle cascading dual check valve contains 3/4" internal components. This valve meets the ASSE flow requirements of a 1" valve. For a full port valve, order the cartridge style check valve.

** 3/4" and 1" dual check valves with enhanced chlorine/chloramine resistance are available. Insert "CR" at end of the alpha code. Example: PFCBHCCR-388-16-60-NL

If PRV lengths are outside of range (see chart below) or have connections other than FNPT, contact factory for price and availability.



15" Single (5/8" x 3/4") Setting
Ball Valve x Dual Check Valve



15" Tandem Setting (5/8" x 3/4")
Ball Valve x Dual Check Valve

STANDARD COIL PITSETTER PRV LENGTH RANGE

| TILE SIZE AND METER SETTINGS | WITH RA ADAPTERS | | WITHOUT ADAPTERS | |
|---------------------------------|------------------|--------|------------------|--------|
| | MIN | MAX* | MIN | MAX* |
| 5/8" METER SETTING | | | | |
| 15" Tile | 4-1/4" | 5-1/4" | 7" | 8" |
| 15" Tile w/Full port ball valve | 3-1/2" | 4-1/2" | 7-1/4" | 8-1/4" |
| 5/8" x 3/4" METER SETTING | | | | |
| 15" Tile | 4" | 4-3/4" | 7-1/8" | 7-7/8" |
| 15" Tile w/Full port ball valve | 3-3/8" | 4-1/8" | 6-1/2" | 7-1/4" |
| 18" Tile | 4-1/2" | 5-3/4" | 7-5/8" | 8-7/8" |
| 18" Tile w/Full port ball valve | 3-7/8" | 4-7/8" | 7" | 8" |
| 3/4" METER SETTINGS | | | | |
| 18" Tile | 4-5/8" | 6-5/8" | 7-3/4" | 9-3/4" |
| 18" Tile w/Full port ball valve | 4-1/8" | 6-1/8" | 7-1/4" | 9-1/4" |
| 1" METER SETTINGS | | | | |
| 18" Tile | 4" | 4-1/4" | 7-3/8" | 7-5/8" |
| 18" Tile w/Full port ball valve | 3-1/2" | 3-3/4" | 6-7/8" | 7-1/8" |

PRV lengths with connections other than FNPT or lengths outside of the range, please contact factory for price and availability.
*Max length may differ on pitsetters with a Secura-Lok™ valve.

15" DIAMETER COIL PIT SETTER WITH SINGLE OR TANDEM SETTINGS FOR 5/8", OR 5/8" X 3/4" METERS

1. What type of pit setting is required?

+

2. What type of inlet valve is required?

+

3. What type of outlet valve is required?

+(insert dash)

4. What meter size is required?

+

5. What type of inlet connection is required?
(see note below)

+

6. What type of outlet connection is required?
(see note below)

+(insert dash)

7. What pit diameter and depth is required?
(Depth is measured from ground level to service line.
The service line is 4" higher than bottom of pit setter.)

| SETTING TYPE | CODE | LIST PRICE |
|------------------------|------|------------|
| Coil Pit Setter-Single | PFC | \$ 1350.25 |
| Coil Pit Setter-Tandem | PTFC | 1508.45 |

| INLET VALVE TYPE | CODE | SINGLE OR TANDEM SETTING LIST PRICE |
|---|-----------|-------------------------------------|
| Angle Ball Valve (reduced port) | B | Standard |
| Angle Key Valve | V | \$ -14.55 |
| Angle Ball Valve (full port with 360° rotation) | B*(-FP-R) | 74.25 |

| OUTLET VALVE TYPE | CODE | SINGLE OR TANDEM SETTING LIST PRICE |
|------------------------------------|-----------|-------------------------------------|
| ● Angle Cascading Dual Check Valve | HH | Standard |
| Angle Single Check Valve | H | \$ -62.48 |
| Ell | L | -100.56 |
| Angle Ball Valve (reduced port) | B | -54.93 |
| Angle Key Valve | V | -69.49 |
| Angle Ball Valve (full port) | B*(-FP-R) | 14.31 |

| METER SIZE | CODE | SINGLE OR TANDEM SETTING LIST PRICE |
|-------------|------|-------------------------------------|
| 5/8" | 1 | \$ 0.00 |
| 5/8" x 3/4" | 2 | 0.00 |

| SERVICE LINE | CODE | SINGLE OR TANDEM SETTING LIST PRICE |
|---------------------------|------|-------------------------------------|
| 3/4" MIP Inlet and Outlet | 88 | Standard |

FA

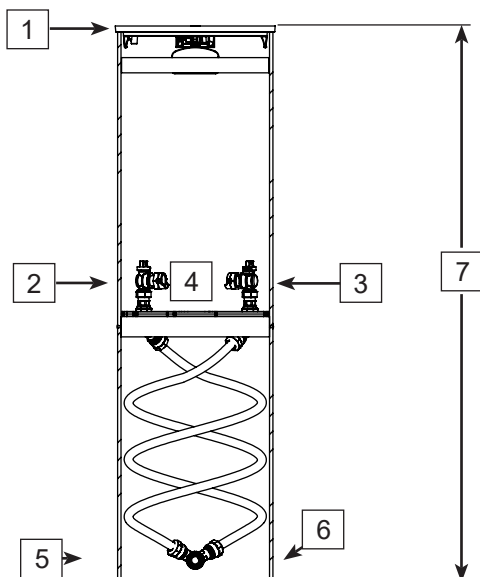
| TILE DIAMETER AND HEIGHT | CODE | SINGLE OR TANDEM SETTING LIST PRICE |
|--------------------------|----------|-------------------------------------|
| 15" x 36" | 15-36-NL | Standard |
| 15" x 42" | 15-42-NL | \$ 27.33 |
| 15" x 48" | 15-48-NL | 72.91 |
| 15" x 54" | 15-54-NL | 101.37 |
| 15" x 60" | 15-60-NL | 127.59 |
| 15" x 66" | 15-66-NL | 181.76 |
| 15" x 72" | 15-72-NL | 210.50 |
| 15" x 78" | 15-78-NL | 239.20 |
| 15" x 84" | 15-84-NL | 300.73 |
| 15" x 90" | 15-90-NL | 330.78 |
| 15" x 96" | 15-96-NL | 360.86 |

Note: Regulator adapters are furnished with standard coil pits. For PRV lengths with end connections other than FNPT or lengths outside of range, see chart on page FA-8. Contact factory for price and availability.

* Setters with angle ball valves will be reduced port unless otherwise requested. Reduced port valves usually provide suitable water flow. Add "-FP-R" to end of catalog number for full port. Full port ball valves shall have a 360° tee-head rotation.
Example: PFCBH-288-15-48-FP-R-NL

All prices are subject to change without notice. Please contact The Ford Meter Box Company.

- Dual check valves with enhanced chlorine/chloramine resistance are available. Add "CR" to the end of the alpha code.
Ex: PFCBHCR-288-15-48-NL.
Add to price. \$ 19.04



18" DIAMETER COIL PIT SETTER WITH SINGLE OR TANDEM SETTINGS FOR 5/8" OR 5/8" X 3/4" AND 3/4" METERS

1. What type of pit setting is required?

+

2. What type of inlet valve is required?

+

3. What type of outlet valve is required?

+(insert dash)

4. What meter size is required?

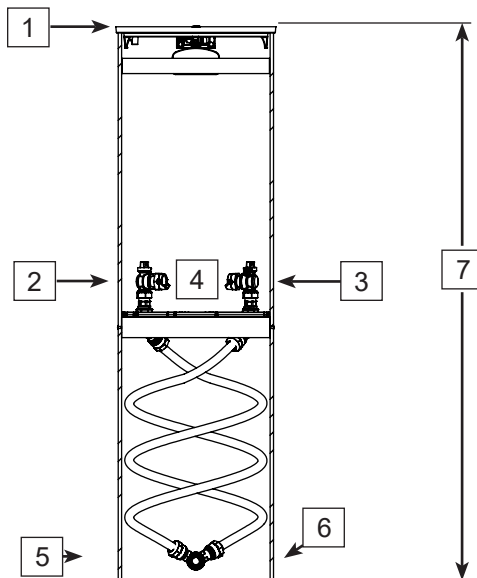
+

5. What type of inlet connection is required?
(see note below)

6. What type of outlet connection is required?
(see note below)

+(insert dash)

7. What pit diameter and depth is required?
(Depth is measured from ground level to service line.
The service line is 4" higher than bottom of pit setter.)



5/8" or 5/8" x 3/4" Meters

| SETTING TYPE | CODE | LIST PRICE |
|------------------------|------|------------|
| Coil Pit Setter-Single | PFC | \$ 1463.84 |
| Coil Pit Setter-Tandem | PTFC | 1622.06 |
| Coil Pit Setter-Dual | PDFC | 2498.62 |

3/4" Meters

| SETTING TYPE | CODE | LIST PRICE |
|------------------------|--------|------------|
| Coil Pit Setter-Single | PFC | \$ 1413.86 |
| Coil Pit Setter-Tandem | PTFC | 1572.06 |
| Coil Pit Setter-Dual | **PDFC | 2498.62 |

| INLET VALVE TYPE | CODE | SINGLE OR TANDEM SETTING LIST PRICE | DUAL SETTING LIST PRICE |
|---------------------------------|---------|-------------------------------------|-------------------------|
| Angle Ball Valve (reduced port) | B | Standard | Standard |
| Angle Key Valve | V | \$ -14.55 | \$ -29.11 |
| Angle Ball Valve (full port) | B*(-FP) | 74.71 | 149.46 |

| OUTLET VALVE TYPE | CODE | SINGLE OR TANDEM SETTING LIST PRICE | DUAL SETTING LIST PRICE |
|------------------------------------|---------|-------------------------------------|-------------------------|
| • Angle Cascading Dual Check Valve | HH | Standard | Standard |
| Angle Single Check Valve | H | \$ -62.48 | \$ -124.92 |
| Ell | L | -100.56 | -201.10 |
| Angle Ball Valve (reduced port) | B | -54.93 | -109.88 |
| Angle Key Valve | V | -69.49 | -139.00 |
| Angle Ball Valve (full port) | B*(-FP) | 14.31 | 28.62 |
| • Angle Cartridge Dual Check Valve | HC | 72.40 | 144.78 |

| METER SIZE | CODE | SINGLE OR TANDEM SETTING LIST PRICE | DUAL SETTING LIST PRICE |
|-------------|------|-------------------------------------|-------------------------|
| 5/8" | 1 | - | - |
| 5/8" x 3/4" | 2 | - | - |
| 3/4" | 3 | - | - |

| SERVICE LINE | CODE | SINGLE OR TANDEM SETTING LIST PRICE | DUAL SETTING LIST PRICE |
|---------------------------|------|-------------------------------------|-------------------------|
| 3/4" MIP Inlet and Outlet | 88 | Standard | - |
| 1" MIP x (2) 3/4" MIP | 88 | - | Standard |

| TILE DIAMETER AND HEIGHT | CODE | SINGLE OR TANDEM SETTING LIST PRICE | DUAL SETTING LIST PRICE |
|--------------------------|----------|-------------------------------------|-------------------------|
| 18" x 36" | 18-36-NL | Standard | N/A |
| 18" x 42" | 18-42-NL | \$ 35.06 | \$ 192.92 |
| 18" x 48" | 18-48-NL | 88.30 | 223.37 |
| 18" x 54" | 18-54-NL | 130.04 | 265.11 |
| 18" x 60" | 18-60-NL | 159.95 | 295.02 |
| 18" x 66" | 18-66-NL | 222.24 | 368.44 |
| 18" x 72" | 18-72-NL | 259.04 | 405.24 |
| 18" x 78" | 18-78-NL | 295.81 | 442.03 |
| 18" x 84" | 18-84-NL | 368.41 | 525.74 |
| 18" x 90" | 18-90-NL | 406.94 | 564.29 |
| 18" x 96" | 18-96-NL | 445.47 | 602.82 |

3/4" MIP inlet-outlet and tubing are standard. For 1" MIP inlet-outlet and tubing add "A" to end of the catalog number. This option is not available on dual settings.
Example: PFCBH-288-18-60A-NL

| 1" COIL TUBING | CODE | LIST PRICE |
|----------------|------|------------|
| 36" to 42" | A | \$ 103.54 |
| 48" to 60" | A | 113.49 |
| 66" to 78" | A | 128.64 |
| 84" to 96" | A | 144.76 |

Note: Regulator adapters are furnished with standard coil pits. For PRV lengths with end connections other than FNPT or lengths outside of range, see chart on page FA-8. Contact factory for price and availability.

* Setters with angle ball valves will be reduced port unless otherwise requested. Reduced port valves usually provide suitable water flow. Add "-FP" to end of catalog number for full port.
Example: PFCBH-288-18-48-FP-NL

** Dual pit setters for 3/4" meters, requiring full port ball valves, shall have a 360° tee-head rotation. Example: PDFCBB-388-18-48-FP-R-NL
All prices are subject to change without notice. Please contact The Ford Meter Box Company.

• Dual check valves with enhanced chlorine/chloramine resistance are available
Add "CR" to the end of the alpha code. Ex: PFCBHH^{CR}-288-18-48-NL.
Add to price for cartridge style \$ 39.02
Add to price for cascading style \$ 19.04

18" DIAMETER COIL PIT SETTER WITH SINGLE OR TANDEM SETTINGS FOR 1" METERS

1. What type of pit setting is required?
+
2. What type of inlet valve is required?
+
3. What type of outlet valve is required?

+ (insert dash)

4. What meter size is required?
+
5. What type of inlet connection is required?
+ (see note below)
6. What type of outlet connection is required?
+ (see note below)
+ (insert dash)
7. What pit diameter and depth is required?
(Depth is measured from ground level to service line.
The service line is 4" higher than bottom of pit setter.)

| SETTING TYPE | CODE | LIST PRICE |
|------------------------|------|------------|
| Coil Pit Setter-Single | PFC | \$ 1946.46 |
| Coil Pit Setter-Tandem | PTFC | 2278.28 |

| INLET VALVE TYPE | CODE | LIST PRICE |
|--|---------|------------|
| * Angle Ball Valve (reduced port with 360° rotation) | B(-R) | Standard |
| Angle Key Valve | V | \$ -61.28 |
| ** Angle Ball Valve (full port) | B*(-FP) | 67.31 |

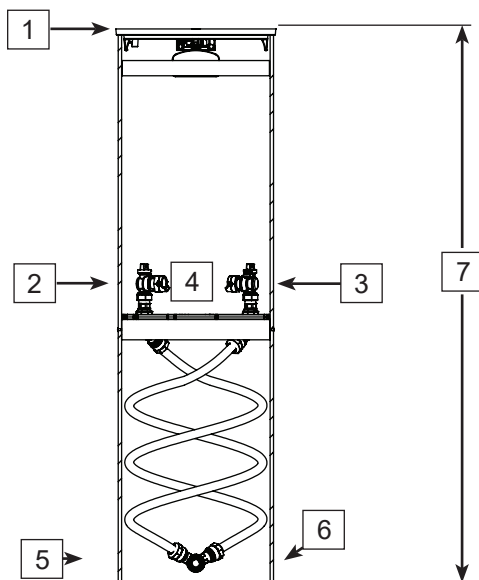
| OUTLET VALVE TYPE | CODE | LIST PRICE |
|---|---------|------------|
| △ Angle Cascading Dual Check Valve | HH | Standard |
| △ Angle Cascading Dual Check Valve with Enhanced Chlorine/Chloramine Resistance | HHCR | \$ 19.04 |
| Angle Cartridge Dual Check Valve | HC | 130.24 |
| Angle Cartridge Dual Check Valve with Enhanced Chlorine/Chloramine Resistance | HCCR | 179.71 |
| Angle Single Check Valve | H | -52.91 |
| EII | L | -88.70 |
| * Angle Ball Valve (reduced port with 360° rotation) | B(-R) | 24.76 |
| Angle Key Valve | V | -38.78 |
| ** Angle Ball Valve (full port) | B*(-FP) | 92.06 |

| METER SIZE | CODE | LIST PRICE |
|------------|------|------------|
| 1" | 4 | - |

| SERVICE LINE | CODE | LIST PRICE |
|-------------------------|------|------------|
| 1" MIP Inlet and Outlet | 88 | Standard |

| TILE DIAMETER AND HEIGHT | CODE | LIST PRICE |
|--------------------------|----------|------------|
| 18" x 36" | 18-36-NL | Standard |
| 18" x 42" | 18-42-NL | \$ 37.34 |
| 18" x 48" | 18-48-NL | 89.29 |
| 18" x 54" | 18-54-NL | 131.10 |
| 18" x 60" | 18-60-NL | 160.39 |
| 18" x 66" | 18-66-NL | 224.88 |
| 18" x 72" | 18-72-NL | 262.16 |
| 18" x 78" | 18-78-NL | 299.49 |
| 18" x 84" | 18-84-NL | 372.86 |
| 18" x 90" | 18-90-NL | 411.99 |
| 18" x 96" | 18-96-NL | 451.07 |

FA



Note: Regulator adapters are furnished with standard coil pits. For PRV lengths with end connections other than FNPT or lengths outside of range, see chart on page FA-8. Contact factory for price and availability.

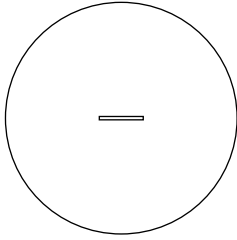
- * Setters with angle ball valves will be reduced port unless otherwise requested. Reduced port valves usually provide suitable water flow.
- △ Angle cascading dual check valve contains 3/4" internal components. This valve meets the ASSE flow requirements of a 1" valve. For a full port valve order the cartridge style check valve.

- ** Add "-FP" to end of catalog number for full port.
Example: PFCBH-488-18-48-FP-NL (FP = Full port angle ball valve with standard tee-head). Add "-FP-R" where 360° rotation is required - see below. Example: PTFCBH-488-18-36-FP-R-NL

360° T-Head Requirement (-R) for Padwing Clearance on 1" Coil Pits

| Type | "-R" Required |
|---|---------------|
| Single Meter Pit with FP Ball Valve | N |
| Single Meter Pit with Standard Ball Valve | Y |
| Tandem Meter Pit with FP Ball Valve | Y |
| Tandem Meter Pit with Standard Ball Valve | Y |

CLOSED CELL INSULATING DISCS

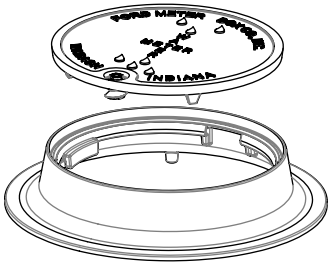


| CATALOG NUMBER | DESCRIPTION | LIST PRICE |
|----------------|--|------------|
| CCID-15 | 15" Closed Cell Insulating Disc – 1-1/2" Thick | \$ 49.44 |
| CCID-15-2 | 15" Closed Cell Insulating Disc – 2" Thick | 49.44 |
| CCID-15-4 | 15" Closed Cell Insulating Disc – 4" Thick | 76.45 |
| CCID-15-6 | 15" Closed Cell Insulating Disc – 6" Thick | 116.73 |
| CCID-18 | 18" Closed Cell Insulating Disc – 1-1/2" Thick | 73.07 |
| CCID-18-2 | 18" Closed Cell Insulating Disc – 2" Thick | 73.07 |
| CCID-18-4 | 18" Closed Cell Insulating Disc – 4" Thick | 109.36 |
| CCID-18-6 | 18" Closed Cell Insulating Disc – 6" Thick | 163.77 |
| CCID-20 | 20" Closed Cell Insulating Disc - 1-1/2" Thick | 87.08 |
| ■ CCID-20C-4-2 | 20" Closed Cell Insulating Disc - 4" Thick for Corrugated Tile | 231.60 |
| CCID-24 | 20" Closed Cell Insulating Disc - 1-1/2" Thick | 128.33 |
| ■ CCID-24C-4-2 | 20" Closed Cell Insulating Disc - 4" Thick for Corrugated Tile | 295.60 |
| ■ CCID-27-2-2 | 27" Closed Cell Insulating Disc - 2" Thick | P.O.A. |
| ■ CCID-27-4-2 | 27" Closed Cell Insulating Disc - 4" Thick | P.O.A. |
| ■ CCID-36-2-2 | 36" Closed Cell Insulating Disc - 2" Thick | 560.57 |
| ■ CCID-36-4-2 | 36" Closed Cell Insulating Disc - 4" Thick | 660.74 |

■ Two-piece with removable center access plug for viewing the meter register.

COIL PIT IRON DRIVEWAY COVER, FRAME AND LID

FA



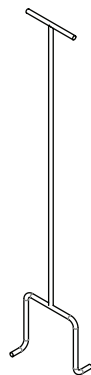
| CATALOG NUMBER | *LID SIZE | APPROX. Wt. Lbs. | LIST PRICE |
|---|-----------|------------------|------------|
| COVER, FRAME AND LOCKING LID | | | |
| A51H | 15" | 70.7 | \$ 509.78 |
| A62H | 18" | 73.7 | 617.59 |
| COVER AND FRAME WITH ELECTRONIC READ LOCKING LID | | | |
| A51H-T | 15" | 70.0 | 515.11 |
| A62H-T | 18" | 73.7 | 622.91 |
| COVER AND FRAME WITH DOUBLE ELECTRONIC READ LOCKING LID | | | |
| A51H-TT | 15" | 65.0 | 520.41 |
| COVER AND FRAME WITH RECESSED ELECTRONIC READ LOCKLESS LID | | | |
| A51H-LL-REC-T | 15" | 70.0 | 520.70 |
| IRON FRAME ONLY | | | |
| *PFC15F | 15" | 32.4 | 245.70 |
| *PFC18F | 18" | 38.5 | 284.69 |
| LOCKING LID ONLY | | | |
| WA5LH | 15" | 38.3 | 264.07 |
| WA6LH | 18" | 35.3 | 332.90 |
| LOCKING ELECTRONIC READ LID ONLY | | | |
| WA5LH-T | 15" | 37.6 | 269.41 |
| WA6LH-T | 18" | 35.0 | 338.22 |
| LOCKING DOUBLE ELECTRONIC READ LID ONLY | | | |
| WA5LH-TT | 15" | 36.9 | 274.71 |
| WA6LH-TT | 18" | 35.0 | 343.56 |

* Lid size indicates approximate pit access opening; actual lid diameter is approximately 1" larger.

Note: Frames cannot be used with standard coil pit flat lids. Must be used with these matching lids only.

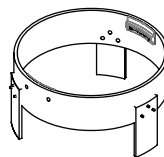
COIL PIT ACCESS RODS AND EXTENSION RINGS

COIL PIT METER PLATFORM ACCESS RODS



| CATALOG NUMBER | METER SIZE | SERVICE LINE DEPTH | APPROX. WT. LBS. | LIST PRICE |
|----------------|---------------------|--------------------|------------------|------------|
| CPLR-2-36 | 5/8" or 5/8" x 3/4" | Up to 60" | 5.9 | \$ 218.95 |
| CPLR-2-48 | 5/8" or 5/8" x 3/4" | Up to 72" | 5.9 | 228.11 |
| CPLR-2-60 | 5/8" or 5/8" x 3/4" | Up to 84" | 8.1 | 237.25 |
| CPLR-2-72 | 5/8" or 5/8" x 3/4" | Up to 96" | 8.1 | 246.39 |
| CPLR-3-36 | 3/4" | Up to 60" | 5.0 | 218.95 |
| CPLR-3-48 | 3/4" | Up to 72" | 6.0 | 228.11 |
| CPLR-3-60 | 3/4" | Up to 84" | 7.0 | 237.25 |
| CPLR-3-72 | 3/4" | Up to 96" | 8.0 | 246.39 |
| CPLR-4-36 | 1" | Up to 60" | 5.9 | 218.95 |
| CPLR-4-48 | 1" | Up to 72" | 5.9 | 228.11 |
| CPLR-4-60 | 1" | Up to 84" | 8.1 | 237.25 |
| CPLR-4-72 | 1" | Up to 96" | 8.1 | 246.39 |

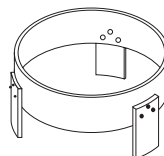
Rods are sold by meter pit size and service line depth.



COIL PIT EXTENSION RINGS

| EXTENSION LENGTH | 15" DIAMETER TILE | APPROX. WT. LBS. | LIST PRICE | 18" DIAMETER TILE | APPROX. WT. LBS. | LIST PRICE |
|------------------|-------------------|------------------|------------|-------------------|------------------|------------|
| 2" | CPS-EXT15-2 | 2.6 | \$ 53.73 | CPS-EXT18-2 | 4.5 | \$ 60.45 |
| 4" | CPS-EXT15-4 | 4.1 | 75.93 | CPS-EXT18-4 | 7.2 | 90.90 |
| 6" | CPS-EXT15-6 | 5.7 | 98.15 | CPS-EXT18-6 | 10.0 | 121.37 |
| 8" | CPS-EXT15-8 | 7.2 | 120.34 | CPS-EXT18-8 | 12.7 | 151.83 |
| 10" | CPS-EXT15-10 | 8.8 | 142.55 | CPS-EXT18-10 | 15.4 | 182.28 |
| 12" | CPS-EXT15-12 | 10.3 | 164.76 | CPS-EXT18-12 | 18.1 | 212.77 |

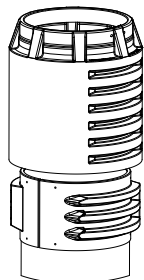
Standard coil pits can accommodate up to a maximum 12" extension ring.
Extension lengths are in 2" increments from 2" to 12" for each tile diameter.



PIT SETTER EXTENSION RINGS

| EXTENSION LENGTH | 18" DIAMETER TILE | APPROX. WT. LBS. | LIST PRICE | 20" DIAMETER TILE | APPROX. WT. LBS. | LIST PRICE |
|------------------|-------------------|------------------|------------|-------------------|------------------|------------|
| 4" | PS-EXT18-4 | 7.1 | \$ 215.78 | PS-EXT20-4 | 3.7 | \$ 227.30 |
| 6" | PS-EXT18-6 | 9.9 | 215.78 | PS-EXT20-6 | 5.2 | 227.30 |
| 8" | PS-EXT18-8 | 12.6 | 229.54 | PS-EXT20-8 | 6.6 | 239.17 |
| 10" | PS-EXT18-10 | 15.3 | 243.53 | PS-EXT20-10 | 8.0 | 260.04 |
| 12" | PS-EXT18-12 | 18.0 | 257.39 | PS-EXT20-12 | 9.4 | 273.28 |

For extension ring lengths and diameters not listed here, contact factory.



ADJUSTABLE PIT SETTER EXTENDER (PATENT 11,668,078)

| EXTENSION LENGTH | CATALOG NUMBER | DESCRIPTION | APPROX. WT. LBS. | LIST PRICE |
|------------------|----------------|---|------------------|------------|
| 3"-12" | CPS-EXT18ADJ | Adjustable Pit extender for coil pits with 18" tile | 110.5 | \$ 471.70 |
| 3"-12" | PS-EXT18ADJ | Adjustable Pit extender for pits with 18" tile | 110.3 | 459.57 |

F
A

COIL PIT LIDS AND BOTTOM PLATES

15" CAST IRON FLAT LIDS

| CATALOG NUMBER | SIZE | APPROX. WT. LBS. | LIST PRICE |
|--|------|---------------------|------------|
| LOCKLESS LIDS | | | |
| PPSC-15 | 15" | 13.0 | \$ 105.03 |
| LOCKING LIDS | | | |
| PPSC-15-L | 15" | 19.8 | 105.03 |
| LOCKING LIDS WITH PLASTIC ERT BRACKET | | | |
| PPSC-15-L-BR | 15" | 20.0 | 137.97 |
| LOCKING ELECTRONIC READ LID | | | |
| PPSC-15-L-T | 15" | 19.8 | 110.35 |
| LOCKING DOUBLE ELECTRONIC READ LID | | | |
| PPSC-15-L-TT | 15" | 19.8 | 115.68 |
| RECESSED LOCKING ELECTRONIC READ LID | | | |
| PPSC-15-L-REC-T | 15" | 21.8 | 117.94 |
| LOCKLESS ELECTRONIC READ LID | | | |
| PPSC-15-T | 15" | 13.0 | 110.35 |
| DOUBLE LOCKLESS ELECTRONIC READ LID | | | |
| PPSC-15-TT | 15" | 20.0 | 115.68 |
| RECESSED LOCKLESS ELECTRONIC READ LID | | | |
| PPSC-15-REC-T | 15" | 17.2 | 117.94 |
| RECESSED LOCKLESS ELECTRONIC READ LID (EXTRA HEAVY) | | | |
| PPSCH-15-REC-T | 15" | 17.2 | 275.00 |

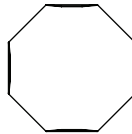
18" CAST IRON FLAT LIDS

| CATALOG NUMBER | SIZE | APPROX. WT. LBS. | LIST PRICE |
|--|------|---------------------|------------|
| LOCKLESS LIDS | | | |
| PPSC-18 | 18" | 24.7 | \$ 194.62 |
| LOCKING LIDS | | | |
| PPSC-18-L | 18" | 28.3 | 194.62 |
| LOCKING LIDS WITH PLASTIC ERT BRACKET | | | |
| PPSC-18-L-BR | 18" | 28.5 | 227.56 |
| LOCKING ELECTRONIC READ LID | | | |
| PPSC-18-L-T | 18" | 26.3 | 199.94 |
| LOCKING DOUBLE ELECTRONIC READ LID | | | |
| PPSC-18-L-TT | 18" | 26.3 | 205.25 |
| RECESSED LOCKING ELECTRONIC READ LID | | | |
| PPSC-18-L-REC-T | 18" | 30.1 | 207.50 |
| LOCKLESS ELECTRONIC READ LID | | | |
| PPSC-18-T | 18" | 24.5 | 199.94 |
| DOUBLE LOCKLESS ELECTRONIC READ LID | | | |
| PPSC-18-TT | 18" | 24.3 | 205.25 |

H-20 RATED COMPOSITE FLAT LIDS

| CATALOG NUMBER | SIZE | APPROX. WT. LBS. | LIST PRICE |
|--|------|---------------------|------------|
| LOCKING LIDS | | | |
| PPSC-15-L-P | 15" | 9.0 | \$ 300.03 |
| LOCKING LIDS WITH PLASTIC ERT BRACKET | | | |
| PPSC-15-L-P-BR | 15" | 9.2 | 307.91 |
| LOCKING LIDS WITH 2" HOLE FOR EMR | | | |
| PPSC-15-L-P-REC-T | 15" | 8.5 | 312.94 |

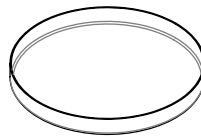
| CATALOG NUMBER | SIZE | APPROX. WT. LBS. | LIST PRICE |
|--|------|---------------------|------------|
| LOCKING LIDS | | | |
| PPSC-18-L-P | 18" | 13.0 | \$ 364.59 |
| LOCKING LIDS WITH PLASTIC ERT BRACKET | | | |
| PPSC-18-L-P-BR | 18" | 13.2 | 372.44 |
| LOCKING LIDS WITH 2" HOLE FOR EMR | | | |
| PPSC-18-L-P-REC-T | 18" | 12.3 | 377.49 |



STAINLESS STEEL BOTTOM PLATE

| CATALOG NUMBER | SIZE | APPROX. WT. LBS. | LIST PRICE |
|----------------|-------|---------------------|------------|
| PPSBP-15 | 15.3" | 3.3 | \$ 173.62 |

| CATALOG NUMBER | SIZE | APPROX. WT. LBS. | LIST PRICE |
|----------------|-------|---------------------|------------|
| PPSBP-18 | 18.7" | 4.1 | \$ 181.30 |



SOLID PLASTIC BOTTOM PLATE

| CATALOG NUMBER | SIZE | APPROX. WT. LBS. | LIST PRICE |
|----------------|-------|---------------------|------------|
| PPSBP-15-P | 15.3" | 1.0 | \$ 125.73 |

| CATALOG NUMBER | SIZE | APPROX. WT. LBS. | LIST PRICE |
|----------------|-------|---------------------|------------|
| PPSBP-18-P | 18.7" | 2.0 | \$ 131.27 |