



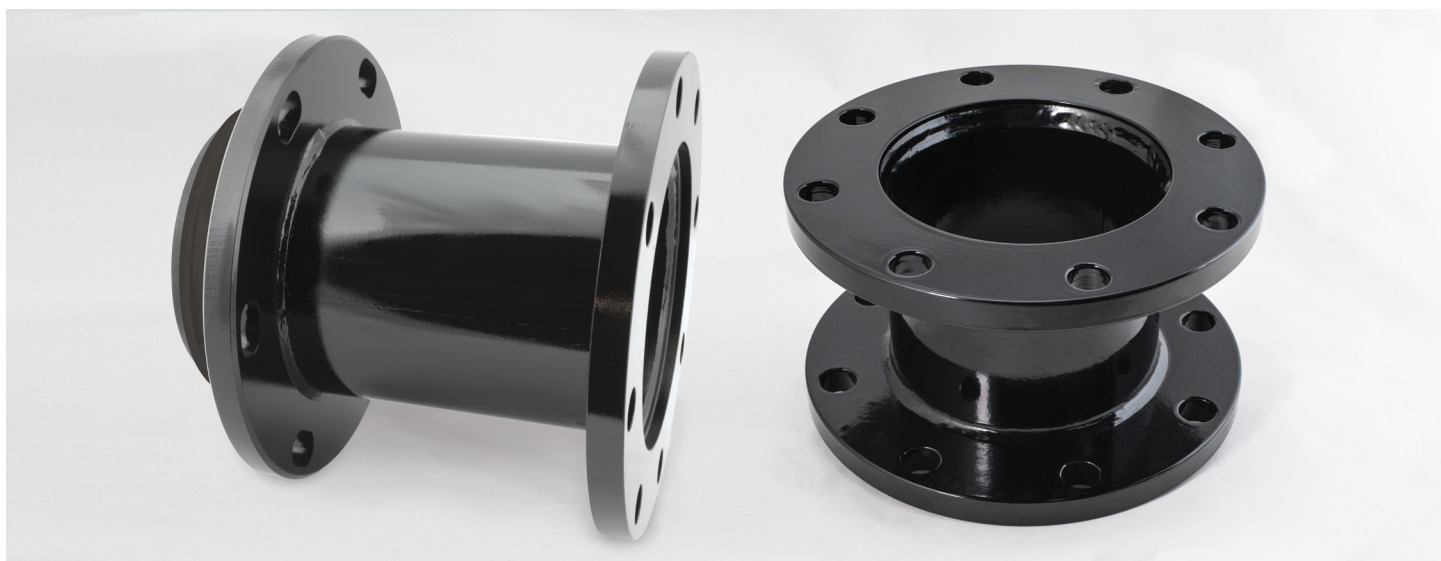
Ford® Fabricated Spools

Product Release

08/2022

Connection Fittings with Multiple End Options

Ford fabricated spools can be manufactured with a plain end (3" - 48"), flange (3" - 48") or MJ Adapter (3" - 24") end combinations, providing the ultimate in custom connection fittings. Available in carbon steel, 304 or 316 stainless steel, along with an option for epoxy coating, Ford can accommodate many custom needs for connection spools.



Material:

(Blank) = Carbon Steel
X = 304 Stainless
Q = 316 Stainless

End Type:

PE = Plain End
D = AWWA Class D Flange
E = AWWA Class E Flange
F = AWWA Class F Flange
MJ = MJ Adapter End
PN10 = PN 10 Flange
PN16 = PN 16 Flange
PN25 = PN 25 Flange

Coating:

(Blank) = *Black Alkyd
Enamel Shop
Coat
E = Epoxy

SPOOLX-12PE-12D-L12-E

Size:

3" - 48" Plain End or Flanged End
3" - 24" MJ End

Length:

**6" - 24"

* No coating if stainless steel material selected

** Contact factory for longer spools

The Ford Meter Box Company, Inc. 775 Manchester Avenue, P.O. Box 443, Wabash, Indiana, USA 46992-0443
Telephone: 260-563-3171 FAX: 800-826-3487 Overseas FAX: 260-563-0167 www.fordmeterbox.com

SPOOL