

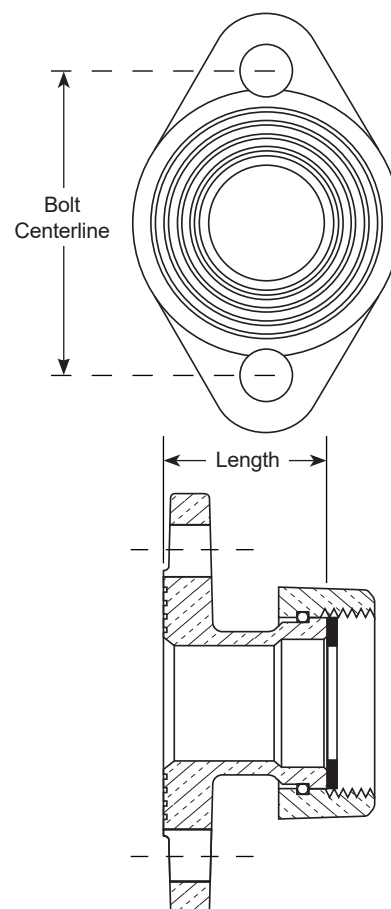
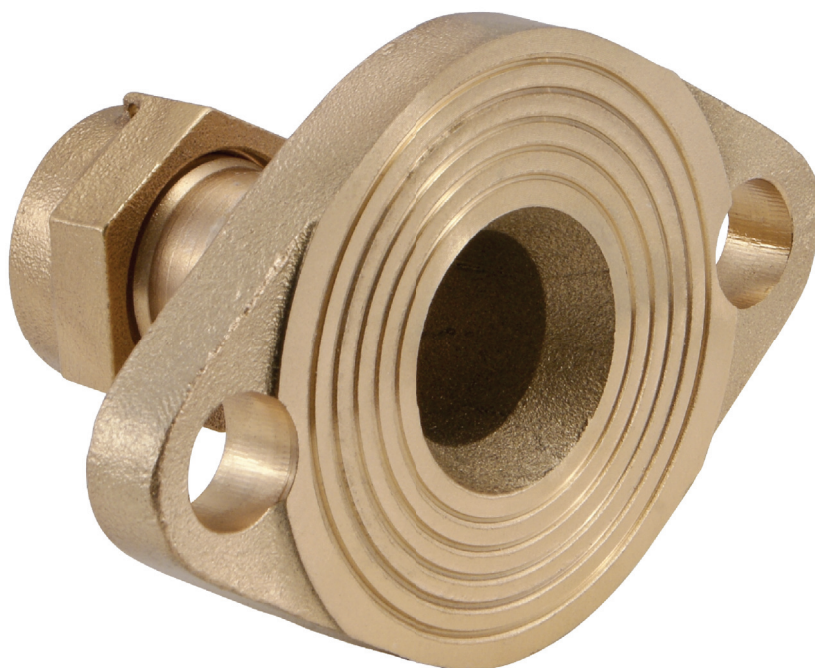


Meter Conversion Adapters

Product Bulletin

04/2021

For adapting meters to a flanged connection, Ford offers 1-1/2" and 2" flanged adapters that convert male meter threaded connections to an oval meter flange of equivalent size, providing for quick and efficient retrofit applications.



CATALOG NUMBER	DESCRIPTION	LENGTH	BOLT CENTERLINE
CF33-66S-2-125-NL	Adapter, 1-1/2" Meter Swivel to 1-1/2" Meter Flange	2.125"	4.00"
CF33-77S-2-25-NL	Adapter, 2" Meter Swivel to 2" Meter Flange	2.250"	4.50"

Note: Sold as a pair.

The 1-1/2" adapter flange has standard bolt holes while the 2" adapter flange has slotted bolt holes for 1-1/2" and 2" flange applications. Each adapter includes a meter gasket and flange gasket.

Note: These adapters are made up of a meter swivel nut and a meter flange. Please note that when used in meter retrofit applications, the correct lay length of the meter and adapter must be determined for proper fit in the meter opening. For additional information or alternate lengths, please contact your local Ford® distributor or The Ford Meter Box Company, Inc.

The Ford Meter Box Company, Inc. 775 Manchester Avenue, P.O. Box 443, Wabash, Indiana, USA 46992-0443

Telephone: 260-563-3171 FAX: 800-826-3487 Overseas FAX: 260-563-0167 www.fordmeterbox.com

FCF33