

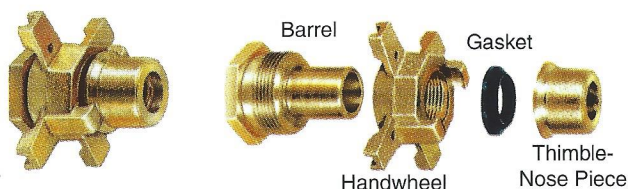
The Meter Setter

5

May, 1996

METER SETTING MADE EASY WITH THE FORD EXPANSION CONNECTION

The Expansion Connection



The Ford Expansion Connection is used with a variety of Ford products including the Ford Yoke, Standard Yokebox, Long Yokebox and Gulfbox. Screwed onto one end of a meter, it expands by turning the handwheel to make a dependable compression joint water-tight against the stationary rubber gaskets. When the connection is retracted, the meter is released and can be easily removed.

All Expansion Connections of a given size are interchangeable (and have been for over fifty years) so they can be re-used on meters year after year.

The Ford Expansion Connection's unique 3 piece design offers these important advantages over other designs.

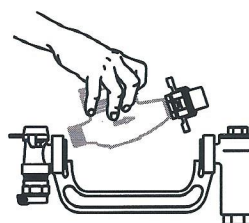
1. Ford's large, tapered expansion gasket is impervious to the cutting action of sand and grit – fragile "O" rings are not.

2. The thimble nose piece on the Ford Expansion Connection does not continue to rotate after making contact with the rubber yoke end gasket and this avoids gasket damage.

3. Not all sizes of competitive expansion connections fit into Ford yokes. Ford has offered complete interchangeability for over 50 years.

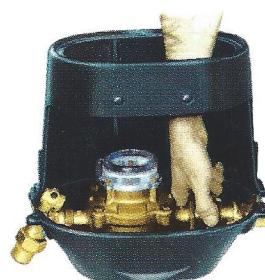
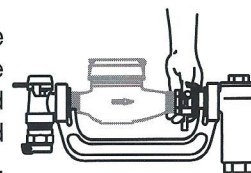
Installation of the Ford Expansion Connection

The Expansion Connection is tightened on the meter with an ordinary wrench. The combination thereby becomes an expandable unit which can be installed or removed in a matter of seconds.



The meter with connection attached is placed and aligned between the rubber gaskets.

Turning the handwheel of the Expansion Connection makes the meter water-tight quickly and easily. No wrench is required for meter changing.



Every Ford Meter Box includes the Expansion Connection.



The Ford Meter Box Company, Inc. P.O. Box 443, Wabash, Indiana, USA 46992-0443

Telephone: 219-563-3171 / FAX: 800-826-3487 / Overseas FAX: 219-563-0167