

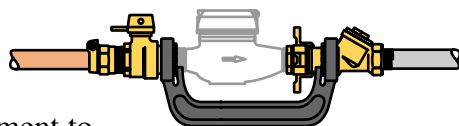
The Ford Yoke

Stability - Accessibility - Versatility - Security

The Ford Meter Box Yoke will provide a convenient and durable setting for water meters and make meter changeouts easier. They also provide substantial savings over meter couplings, valves, curb boxes and pipe fittings, which are eliminated in many cases.

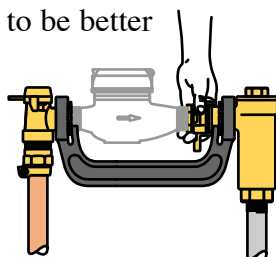
STABILITY

Ford Yokes provide proper spacing and alignment to support the water meter and the water lines. The strong iron yoke piece becomes a permanent part of the piping structure, holding the inlet and outlet pipes, of whatever material, braced and correctly spaced. Electrical continuity is assured, effectively grounding the service line with or without the meter in place.



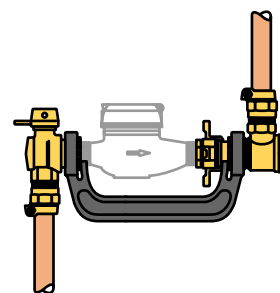
ACCESSIBILITY

Meter changes with Ford Yokes are quick and trouble-free. Meters tend to be better maintained, kept more accurate and utilized more efficiently when easily available. Readily available meters, in Ford Yokes, earn more for the water utility.



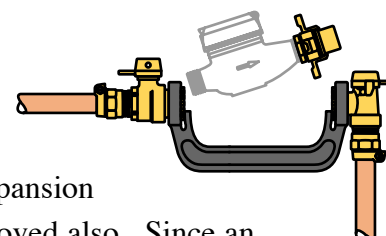
VERSATILITY

Ford Yokes include a variety of valve styles at either the inlet or outlet. Close-coupled to the Yoke piece, the valves are easily inspected and operated. Angle yoke valves and ells can be rotated to connect to piping from any direction.



SECURITY

When a meter is removed from a Ford Yoke, the Expansion Connection is removed also. Since an Expansion Connection is required to complete the installation, the service is automatically sealed preventing the unauthorized use of water.



Turning the handwheel of the Expansion Connection makes the meter water-tight quickly and easily. No wrench is required in the meter pit for meter changing.

To see how the Ford Yoke will help you solve your meter setting problem, contact your local Ford distributor or The Ford Meter Box Company.

