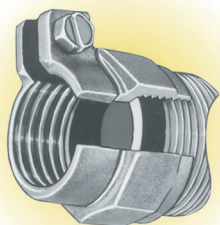


## FORD METER BOX OFFERS THE LARGEST VARIETY OF COMPRESSION COUPLINGS FOR THE INDUSTRY'S BROADEST LINE . . .

### *A FORD METER BOX ORIGINAL - THE TRIED AND TRUE PACK JOINT*



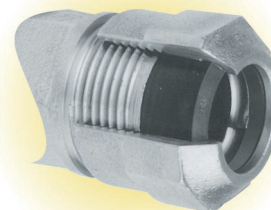
**Pack Joint Couplings** - Ford Pack Joints offer a balanced design on every type of pipe. Stab the pipe into the fitting, tighten the Buna-N gasketed nut for a water-tight seal, and tighten the clamp screw. You get all the pullout resistance you need for the heaviest backfill loads-but not more than you need. Plus hydraulic blow-off protection that holds even beyond the point where plastic piping ruptures.

### *THE ONE STEP COUPLING WHICH IS INTERCHANGABLE WITH THE PACK JOINT*

**Grip Joint Couplings** - The Grip Joint is a one-step compression coupling with the proven reliability you expect from Ford. It's quick and easy to install. Just stab the copper or plastic tubing into the fitting and tighten down the compression nut. Our **exclusive** design won't overcompress the gasket or cut the tubing. NOTE: The Ford Grip Joint IS interchangeable with Ford copper tube size Pack Joint fittings.

### *A ONE STEP COUPLING MADE WITH THE FORD TRADITION OF QUALITY*

**Quick Joint Couplings** - The Ford Quick Joint is available on a wide variety of Ford products. Just stab the copper or plastic tubing into the fitting and tighten down the compression nut to the stop. That's it! The Quick Joint provides excellent pullout resistance and superior hydraulic blow-off protection. Note: The Ford Quick Joint Nut IS NOT interchangeable with other Ford Compression fittings.



### *GET THE LEAD OUT WITH THE FORD METER BOX LEAD-PAK*

**Lead-Pak Couplings** - Recognizing the potential hazard of lead service lines, the Environmental Protection Agency has a goal of eliminating lead lines. Water utilities throughout the country are trying to "get the lead out." As buried lead services are unearthed because of construction or line failure, an opportunity exists to replace lead with a different type of material. By using the Lead-Pak you can attach copper, iron or plastic to an existing lead service line.

