

**SUPERIOR QUALITY  
SUPERIOR PROTECTION**

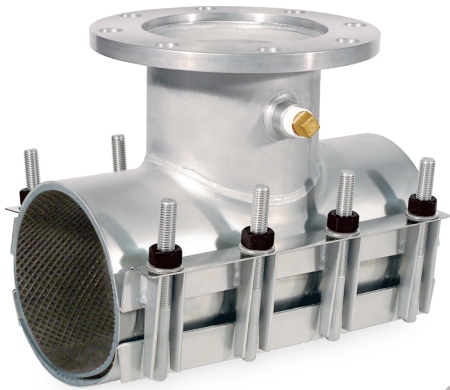


**STAINLESS  
STEEL**  
*by Ford Meter Box*

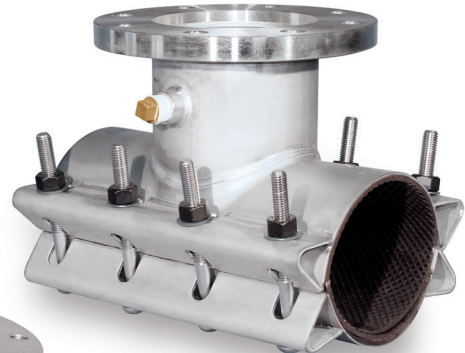
# Ford® Stainless Steel Products

For a complete line of strong and durable stainless steel waterworks products, choose Ford Meter Box. Offering standard and custom sized products designed and manufactured in the USA, Ford's stainless products provide the quality you demand.

## Stainless Steel Tapping Sleeves



**Ford FAST Tapping Sleeve**



**Ford FTSS Tapping Sleeve**



**Ford FTSAS Tapping Sleeve**

**Ford Stainless Tapping Sleeves** are made from type 304 stainless steel and seal with a NBR (Buna-N) outlet gasket (EPDM gaskets available). Rated for 250 psi working pressure through 12" sizes, Ford Tapping Sleeves are available in sizes 4"-48".

## Stainless Steel Saddles



**FS300 Series**



**FRS202 Double Band Repair Saddle**

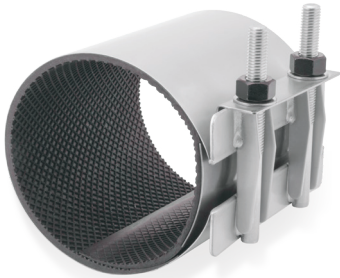
**Ford Stainless Steel Saddles** are designed for use where corrosive conditions exist. Engineered for all pipe types, the stainless steel construction allows the saddle to conform to the pipe, reducing stress.

316 stainless steel available for many Ford products. Contact factory for details.

Ford, Ford Meter Box and Uni-Flange are trademarks of The Ford Meter Box Company, Inc. registered in the U.S.

# Ford® Stainless Steel Products

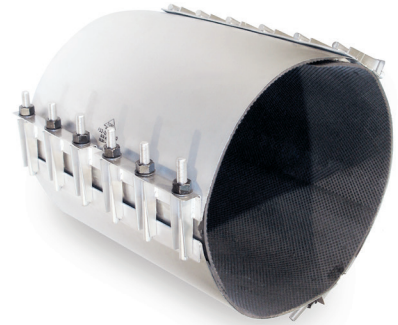
## All Stainless Steel Repair Clamps



FS1 Series



FS2 Series



FS3 Series

**The Ford FS Style All Stainless Steel Repair Clamp** combines the corrosion-resistant characteristics of stainless steel and the sealing capabilities of rubber to provide a strong, dependable and versatile repair clamp.

The all stainless design is lightweight and easy to handle under the adverse conditions associated with almost every main break. The fixed bolt position provides uniform bolt control and fewer parts to fall into the trench. The sliding lifter bar is retained on the bolts by the heavy hex nuts and facilitates the installation by serving as a handle while installing the clamp.

## All Stainless Steel Repair Clamps / Drop-In Bolt Design



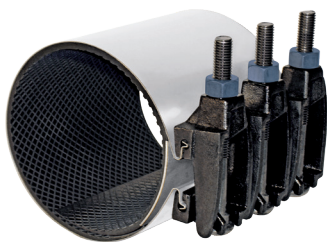
FLS1



FLS2 Series

**The Ford Drop-In Bolt Repair Clamp** has all the advantages of the Ford FS Stainless Series, but is designed with heavy-duty stainless steel lugs and removable bolts that “drop-in” place.

## Stainless Steel Repair Clamps with Ductile Iron Lugs



F1 Series



F2 Series



F3 Series

**The Ford F Style Repair Clamp** provides a simple and economical method of repairing holes or breaks in water mains, particularly where corrosion is not a factor. Ford clamps offer heavy-duty lug construction for maximum strength and a drop-in bolt design that does not require bolt removal when installing the clamp. There are never any loose parts to lose in the ditch.

For HDPE pipe applications, Ford offers a complete line of stainless steel products that incorporate Belleville washers to better accommodate the expansion and contraction of HDPE pipe. To order, add a “P” to the prefix (FASTP, FTSSP, FTSASP, FSP300, FRSP, FSP, FLSP and FP).

## Stainless Steel Snap and Wrap Clamps



FSC Snap Clamp



FSC-R Wrap Clamp



FSC-R2 Dual Armor Wrap Clamp

Ford Snap and Wrap Clamps offer a handy and economical way to repair pinholes and other small leaks.

Want Security and Durability?  
***Specify Ford Stainless Steel Products!***

### For Long-Lasting Durability, Demand Fully Passivated Products

Stainless steel has a natural, passive, self-repairing chromium oxide film that is formed on the outside surface as the result of a continual process of low-level oxidation. It is this passive layer that gives stainless steels their corrosion resistance. The welding of stainless steel compromises this film and leaves a residue that may prevent the re-formation of the passive layer. The Ford passivation process consists of a chemical bath followed by a water rinse that removes welding residue and other foreign particles from the manufacturing process, thus allowing the formation of the passive layer to restore the stainless steel characteristics.

STAINLESS  
STEEL

*by Ford Meter Box*



**The Ford Meter Box Company, Inc.** 775 Manchester Avenue, P.O. Box 443, Wabash, Indiana, USA 46992-0443  
Telephone: 260-563-3171 FAX: 800-826-3487 Overseas FAX: 260-563-0167 <http://www.fordmeterbox.com>