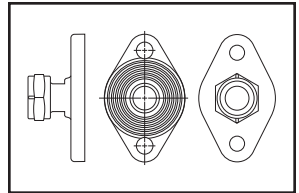
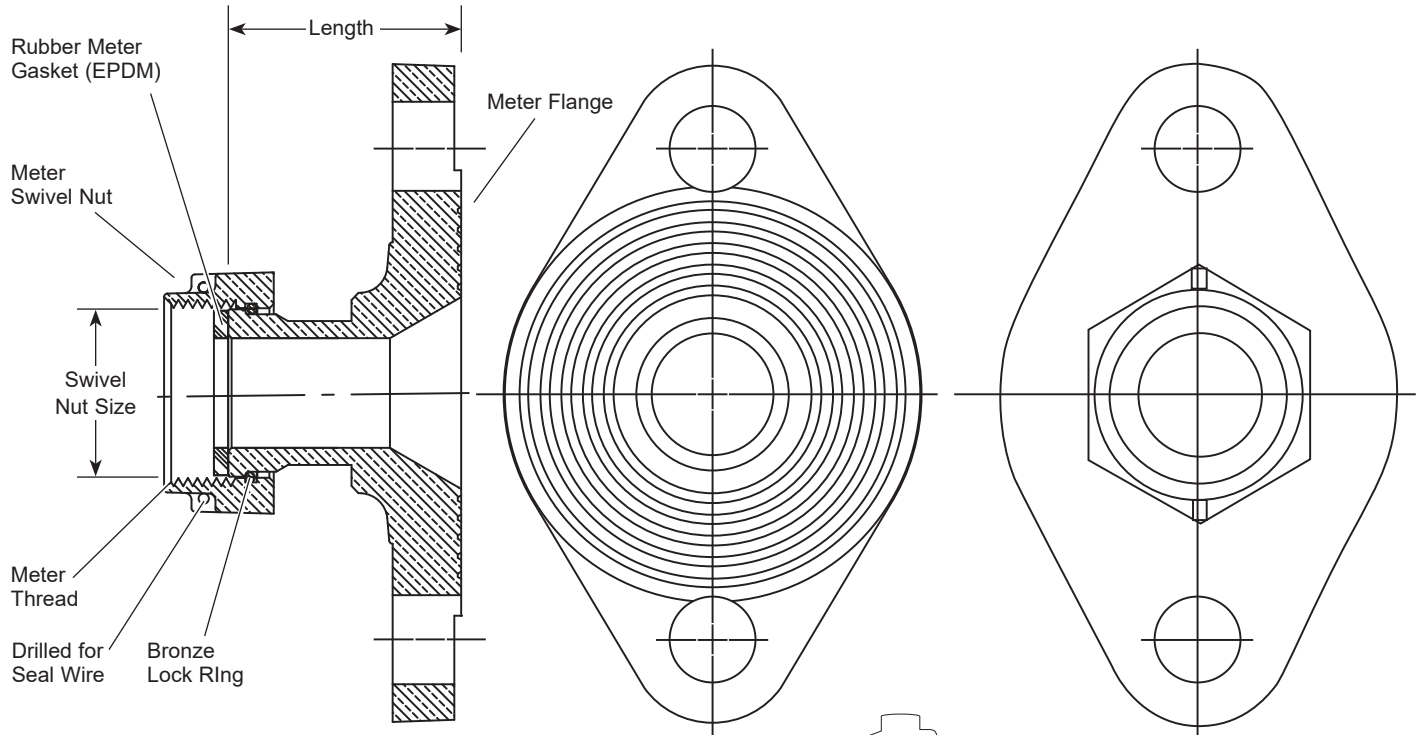


SUBMITTAL INFORMATION

Meter Adapter - (A47-2-125-NL Swivel Nut to Flange Style)



ADAPTERS TO CHANGE METER SPUD SIZE AND LENGTH (1" TO 2")



The drawing at the right shows a pair of A47-2-125-NL adapters attached to a water meter.



One pair of this adapter converts the overall lay length from 10-3/4" to 15-1/4".

| DESCRIPTION | | LENGTH | APPROX. WT. LBS. | PART NUMBER | ✓ SUBMITTED ITEM(S) |
|-----------------|-------------|--------|---------------------|----------------|------------------------|
| SWIVEL NUT SIZE | FLANGE SIZE | | | | |
| 1" | 2" | 2-1/8" | 3.7 | A47-2-125-NL | |

FEATURES

- All brass that comes in contact with potable water conforms to AWWA Standard C800 (ASTM B584, UNS C89833)
- The product has the letters "NL" cast into the main body for lead-free identification
- Certified to NSF/ANSI/CAN Standard 61 and NSF/ANSI/CAN Standard 372 where applicable
- Brass components that do not come in contact with potable water conform to AWWA Standard C800 (ASTM B62 and ASTM B584, UNS C83600, 85-5-5-5)
- Flange meter adapters are furnished in pairs
- Conforms to AWWA C700 for meter threads

The Ford Meter Box Company considers the information in this submittal form to be correct at the time of publication. Item and option availability, including specifications, are subject to change without notice. Please verify that your product information is current. Our standard warranty applies.



The Ford Meter Box Company, Inc.
P.O. Box 443, Wabash, Indiana U.S.A. 46992-0443
Phone: 260-563-3171 / Fax: 800-826-3487
Overseas Fax: 260-563-0167
www.fordmeterbox.com

05/17/24

Submitted By: