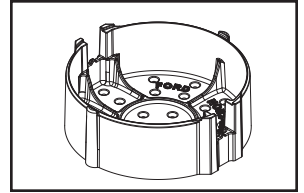
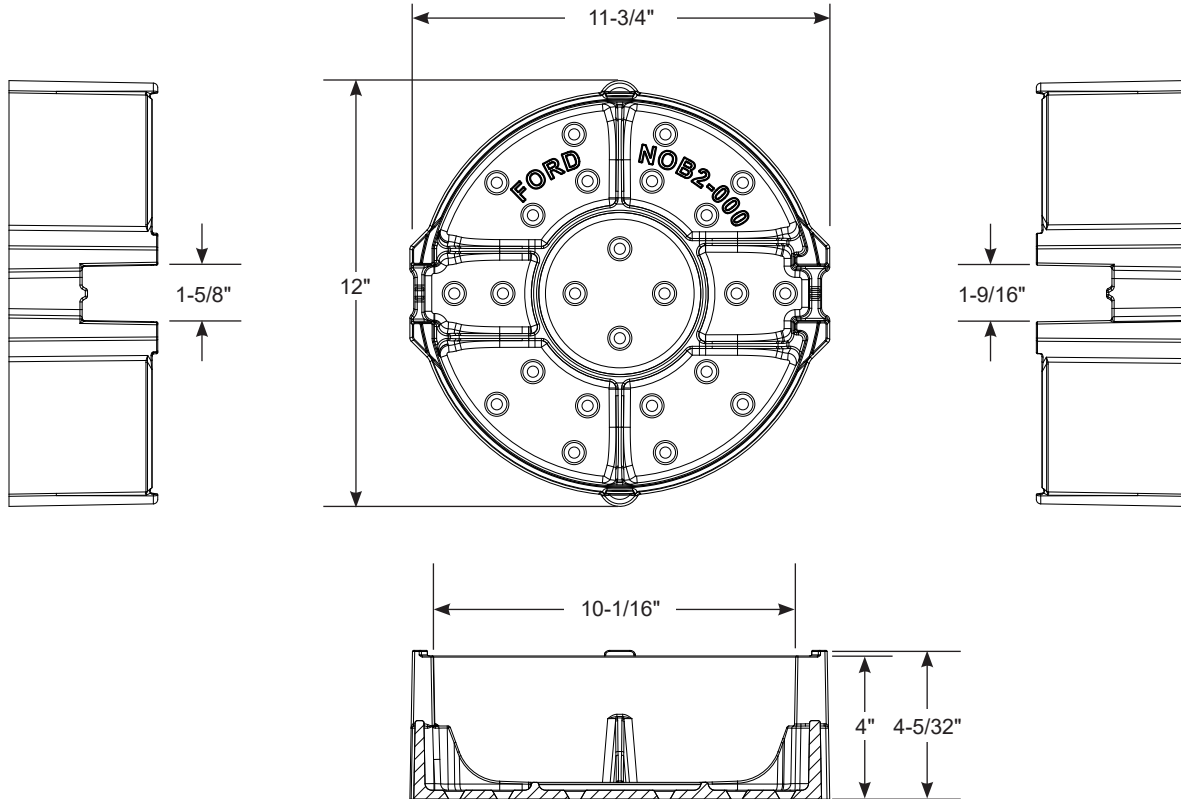


SUBMITTAL INFORMATION

Crescent Box Base - (CBB-1 style)



CRESCENT BOX BASES FOR 5/8" AND 5/8" x 3/4" METERS



METER SIZE	APPROX. Wt. LBS.	CATALOG NUMBER	✓ SUBMITTED ITEM(S)
5/8" - 5/8"x3/4"	17.6	CBB-1	

FEATURES

- Cast iron per ASTM A48, Class 25
- Finish is black e-coating
- Additional Crescent Box component or complete assemblies sold separately

The Ford Meter Box Company considers the information in this submittal form to be correct at the time of publication. Item and option availability, including specifications, are subject to change without notice. Please verify that your product information is current. Our standard warranty applies.



The Ford Meter Box Company, Inc.

P.O. Box 443, Wabash, Indiana U.S.A. 46992-0443

Phone: 260-563-3171 / Fax: 800-826-3487

Overseas Fax: 260-563-0167

www.fordmeterbox.com

02/02/23

Submitted By: