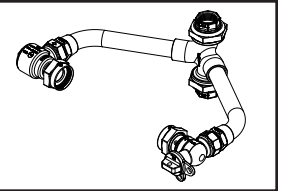
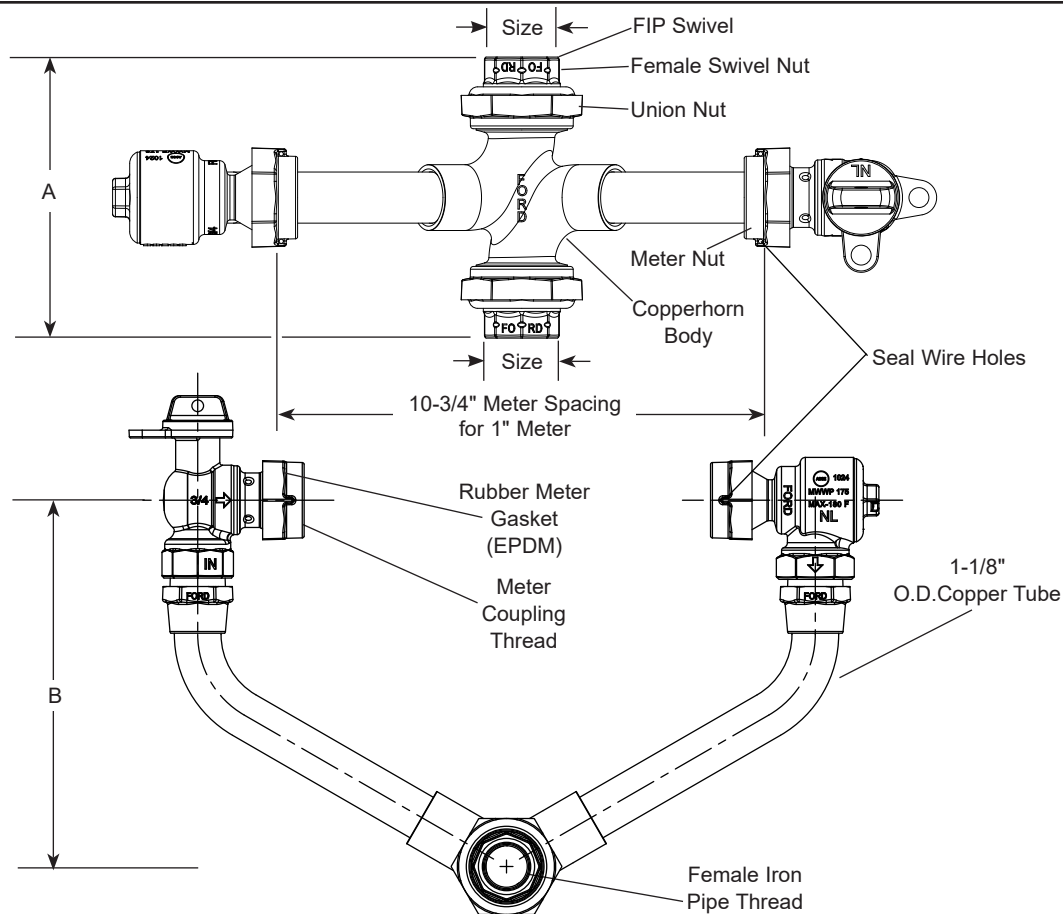


# SUBMITTAL INFORMATION

## Copperhorns - (CHVBHH11-444-NL style)



### ANGLE BALL VALVE BY ANGLE CASCADING DUAL CHECK VALVE FOR 1" METER



SIZE ONE END	SIZE OTHER END	A	B	APPROX. WT. LBS	CATALOG NUMBER	✓ SUBMITTED ITEM(S)
1"	1"	6-1/16"	8-13/16"	9.5	CHVBHH11-444-NL	

#### FEATURES

- All brass that comes in contact with potable water conforms to AWWA Standard C800 (ASTM B584, UNS C89833)
- The product has the letters "NL" cast into the main body for lead-free identification
- Brass components that do not come in contact with potable water conform to AWWA Standard C800 (ASTM B62 and ASTM B584, UNS C83600, 85-5-5-5)
- Certified to NSF/ANSI/CAN Standard 61 and NSF/ANSI/CAN Standard 372 where applicable
- Copper conforms to ASTM B75 or B88, UNS C12200
- All Ford® Setters are assembled with lead-free solder
- Copperhorns automatically ensure proper spacing and orientation for meters
- Permanent electrical bonding is provided without straps
- 1" Copper tubing with full diameter bends provides excellent flow capacity
- Conforms to AWWA C700 for meter threads
- Dual check valve is ASSE 1024 approved

The Ford Meter Box Company considers the information in this submittal form to be correct at the time of publication. Item and option availability, including specifications, are subject to change without notice. Please verify that your product information is current. Our standard warranty applies.



**The Ford Meter Box Company, Inc.**  
P.O. Box 443, Wabash, Indiana U.S.A. 46992-0443  
Phone: 260-563-3171 / Fax: 800-826-3487  
Overseas Fax: 260-563-0167  
www.fordmeterbox.com

11/06/23

Submitted By: