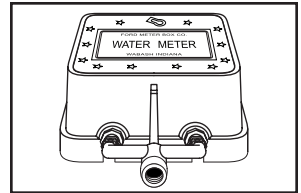
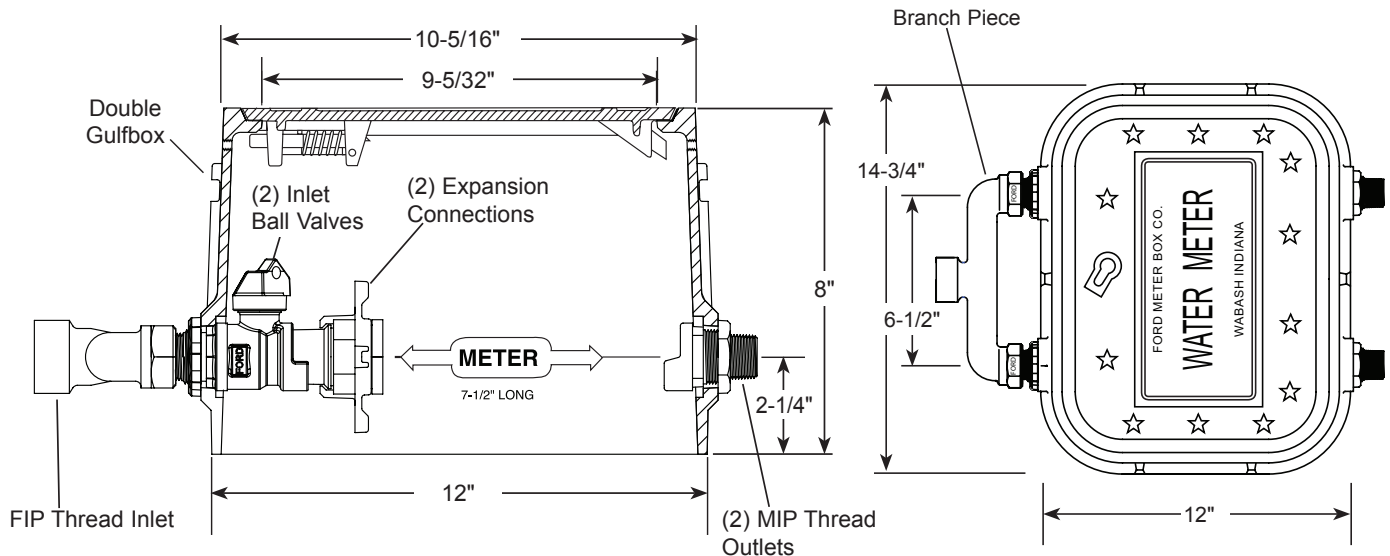


SUBMITTAL INFORMATION

Double Gulfbox - (DG118-243-NL style)



FEMALE IRON PIPE THREAD INLET BY MALE IRON PIPE THREAD OUTLETS (TWO METERS)



METER SIZE	FIP INLET	MIP OUTLET	APPROX. WT. LBS.	CATALOG NUMBER	✓ SUBMITTED ITEM(S)
5/8"x3/4"	1"	3/4"	43.0	DG118-243-NL	

FEATURES

- All brass that comes in contact with potable water conforms to AWWA Standard C800 (ASTM B584, UNS C89833)
- The product has the letters "NL" cast into the main body for lead-free identification
- Brass components that do not come in contact with potable water conform to AWWA Standard C800 (ASTM B62 and ASTM B584, UNS C83600, 85-5-5-5)
- Body and lid - Cast iron per ASTM A48, Class 25
- Brass end fittings - Permanently and properly spaced and aligned for the meters
- Finish - Black e-coating
- Locking lid standard. Lockless lid available. Add "-LL" to catalog number

The Ford Meter Box Company considers the information in this submittal form to be correct at the time of publication. Item and option availability, including specifications, are subject to change without notice. Please verify that your product information is current. Our standard warranty applies.



The Ford Meter Box Company, Inc.
P.O. Box 443, Wabash, Indiana U.S.A. 46992-0443
Phone: 260-563-3171 / Fax: 800-826-3487
Overseas Fax: 260-563-0167
www.fordmeterbox.com

01/12/21

Submitted By: