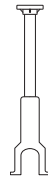
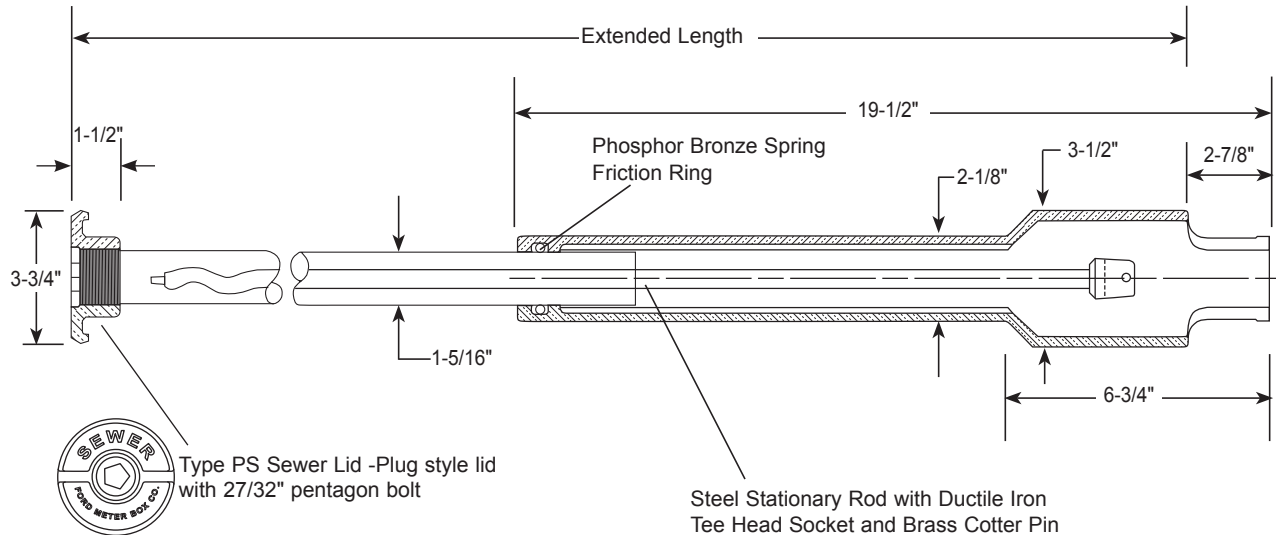


# SUBMITTAL INFORMATION

## Curb Boxes - (EA2-xx-40-xxR-SEWER style)



### ARCH PATTERN - 1" UPPER SECTION - PLUG STYLE SEWER LID - WITH STATIONARY ROD



*EXTENDED LENGTH	ROD LENGTH	APPROX. WT. LBS.	CATALOG NUMBER	✓ SUBMITTED ITEM(S)
2'-6"	18"	13	EA2-25-40-18R-SEWER	
3'	18"	16	EA2-30-40-18R-SEWER	
3'-6"	24"	17	EA2-35-40-24R-SEWER	
3'-6"	36"	18	EA2-35-40-36R-SEWER	
4'	30"	19	EA2-40-40-30R-SEWER	
4'-6"	36"	20	EA2-45-40-36R-SEWER	
5'	42"	21	EA2-50-40-42R-SEWER	
5'-6"	48"	22	EA2-55-40-48R-SEWER	
6'	54"	24	EA2-60-40-54R-SEWER	
6'-6"	60"	25	EA2-65-40-60R-SEWER	
7'	66"	26	EA2-70-40-66R-SEWER	
7'-6"	72"	27	EA2-75-40-72R-SEWER	
8'	78"	28	EA2-80-40-78R-SEWER	
9'	90"	30	EA2-90-40-90R-SEWER	

\*Telescopes to 1 foot less than extended length.

### FEATURES

- Arch base for use with curb stops in sizes 1" and smaller.
- Adaptable to 1-1/4", 1-1/2" and 2" curb stops by placing on the CB-7 curb box base.
- Lid and base made of cast iron per ASTM A48, Class 25.
- Upper section made of steel.
- Brass plug conforms to AWWA Standard C800 (ASTM B62, UNS No C83600 - 85-5-5-5).
- Finish for lid and base is black Armorguard E-coat epoxy. The upper section finish on boxes 7' or shorter is black Armorguard E-coat. For boxes 7.5' or taller, the upper section is coated with corrosion resistant black enamel.
- **Optional stainless steel rod.** Add "-SS" to the end of the part number.

The Ford Meter Box Company considers the information in this submittal form to be correct at the time of publication. Item and option availability, including specifications, are subject to change without notice. Please verify that your product information is current. Our standard warranty applies.



**The Ford Meter Box Company, Inc.**  
P.O. Box 443, Wabash, Indiana U.S.A. 46992-0443  
Phone: 260-563-3171 / Fax: 800-826-3487  
Overseas Fax: 260-563-0167  
www.fordmeterbox.com

11/19/20

Submitted By: