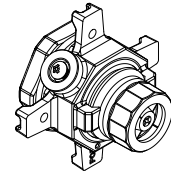
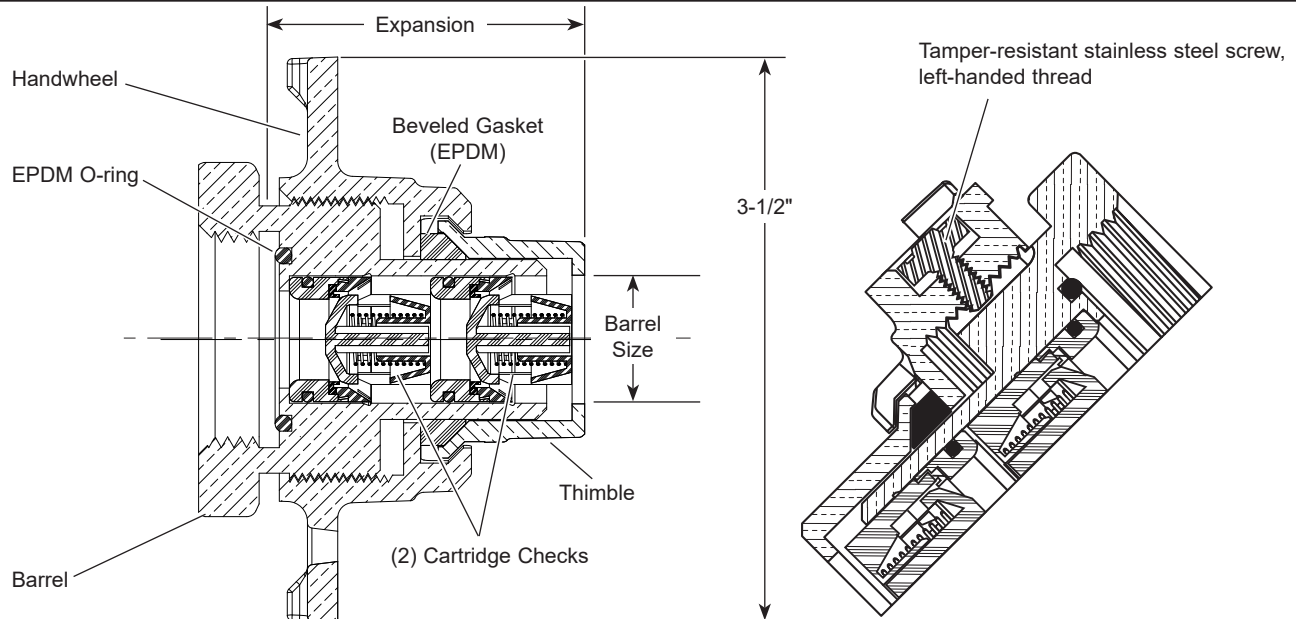


SUBMITTAL INFORMATION

Expansion Connection - (ECL-xx-OR-H2-SSF-NL style)



LOCKING EXPANSION CONNECTION WITH DUAL CHECK VALVES WITH SECURITY SCREW - HANDWHEEL TYPE



METER SIZE	BARREL SIZE	HANDWHEEL DIAMETER	EXPANSION		APPROX. WT. LBS.	CATALOG NUMBER
			MIN.	MAX.		
5/8"	5/8"	3-1/4"	1-35/64"	1-13/16"	0.9	ECL-1-OR-H2-SSF-NL
5/8" x 3/4"	3/4"	3-1/2"	1-3/4"	2-1/8"	1.0	ECL-23-OR-H2-SSF-NL

FEATURES

- All brass that comes in contact with potable water conforms to AWWA Standard C800 (ASTM B584, UNS C89833)
- The product has the letters "NL" cast into the main body for lead-free identification
- Certified to NSF/ANSI/CAN Standard 61 and NSF/ANSI/CAN Standard 372 where applicable
- Brass components that do not come in contact with potable water conform to AWWA Standard C800 (ASTM B62 and ASTM B584, UNS C83600, 85-5-5-5)
- Expansion Connection attaches to the meter; together, they are installed as an expandable unit
- Meter and Expansion Connection unit can be installed or removed with one hand, without a wrench
- Designed to accommodate a security screw that locks handwheel, restricting unauthorized personnel from accessing the water system
- A proprietary security screw is furnished with this product, contact factory for other security screw options
- Security screw driver bit and magnetic nut driver sold separately
- Utilizes two check valve cartridges inserted into barrel
- Thimble nose piece does not rotate after contact with the rubber yoke end gasket. No "walking out"
- 150 maximum working pressure
- 150-degrees Fahrenheit maximum (constant) temperature
- Dual cartridges prevent back-siphonage
- Replacement cartridges available
- ASSE 1024 approved cartridge dual check valve

The Ford Meter Box Company considers the information in this submittal form to be correct at the time of publication. Item and option availability, including specifications, are subject to change without notice. Please verify that your product information is current. Our standard warranty applies.



The Ford Meter Box Company, Inc.
P.O. Box 443, Wabash, Indiana U.S.A. 46992-0443
Phone: 260-563-3171 / Fax: 800-826-3487
Overseas Fax: 260-563-0167
www.fordmeterbox.com

02/01/24

Submitted By: