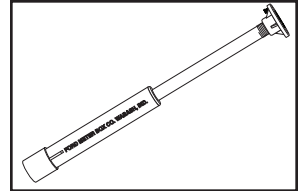
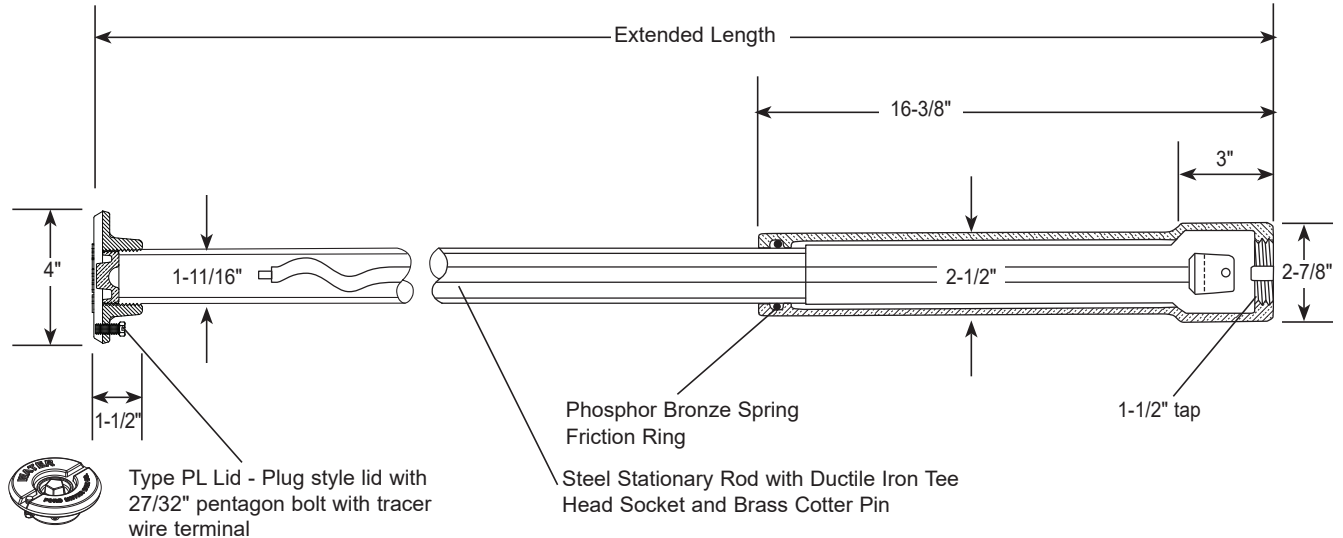


# SUBMITTAL INFORMATION

## Curb Boxes - (*EM2-xx-56-xxR-TW style*)



**MINNEAPOLIS PATTERN - 1-1/4" UPPER SECTION - PLUG STYLE LID WITH TRACER WIRE TERMINAL  
WITH STATIONARY ROD - BASE TAPPED 1-1/2"**



*EXTENDED LENGTH	APPROX. WT. LBS.	CATALOG NUMBER	✓ SUBMITTED ITEM(S)
3'	-	EM2-30-56-18R-TW	
3'-6"	-	EM2-35-56-24R-TW	
4'	-	EM2-40-56-30R-TW	
4'-6"	-	EM2-45-56-36R-TW	
5'	-	EM2-50-56-42R-TW	
5'-6"	-	EM2-55-56-48R-TW	
6'	-	EM2-60-56-60R-TW	
6'-6"	-	EM2-65-56-60R-TW	
7'	-	EM2-70-56-66R-TW	
7'-6"	-	EM2-75-56-72R-TW	
8'	-	EM2-80-56-78R-TW	

\*Telescopes to 1 foot less than extended length.

### FEATURES

- Minneapolis base for use with Minneapolis pattern "BH", 3/4", 1" ball curb stops and 3/4" "Z"-type curb stops.
- Base tapped with 1-1/2" threads.
- Lid and base made of cast iron per ASTM A48, Class 25.
- Upper section made of steel.
- Brass plug conforms to AWWA Standard C800 (ASTM B62, UNS No C83600 - 85-5-5-5).
- Finish for lid and base is black Armorguard E-coat epoxy. The upper section finish on boxes 7' or shorter is black Armorguard E-coat. For boxes 7.5' or taller, the upper section is coated with corrosion resistant black enamel.
- **Optional stainless steel rod.** Add "-SS" to the end of the part number.

The Ford Meter Box Company considers the information in this submittal form to be correct at the time of publication. Item and option availability, including specifications, are subject to change without notice. Please verify that your product information is current. Our standard warranty applies.



**The Ford Meter Box Company, Inc.**

P.O. Box 443, Wabash, Indiana U.S.A. 46992-0443

Phone: 260-563-3171 / Fax: 800-826-3487

Overseas Fax: 260-563-0167

[www.fordmeterbox.com](http://www.fordmeterbox.com)

10/01/25

Submitted By: