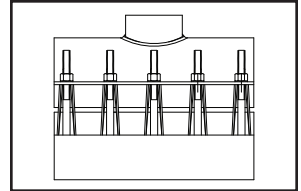


SUBMITTAL INFORMATION

Stainless Steel Tapping Sleeve - (FAST-xxx-TAP-Q style)

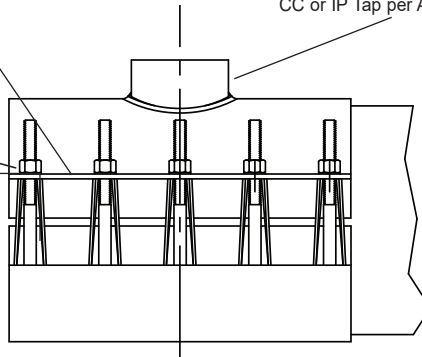


316 STAINLESS STEEL TAPPING SLEEVE WITH IP OR CC TAPPED OUTLET

Lifter bar - Type 316 stainless steel provides a heavy bearing surface for nuts.

Studs, nuts, & washers - Type 316 stainless steel per ASTM A193 and A194. Nuts and washers are coated to prevent galling.

CC or IP Tap per AWWA C800

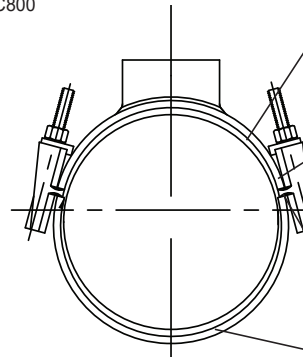


Outlet Gasket - Virgin NBR (Buna-N) compounded for water service, per ASTM D2000. Outlet gasket ensures complete seal of outlet area.

Full Gasket - Gridded Virgin SBR compounded for water service, per ASTM D2000. Full gasket gives 360° pipe coverage.

Armors - Heavy gauge stainless steel are vulcanized to gasket to bridge the gap between lugs.

Body & Strap - Type 316 stainless steel all welds are fully passivated to restore stainless characteristics.



NOM. PIPE SIZE (IN.)	SLEEVE O.D. RANGE (IN.)	CATALOG NUMBER **	SADDLE THICKNESS (GAUGE) (IN.)	STRAP THICKNESS (GAUGE) (IN.)	STUD SIZE (IN.)	MIN. No. STUDS	✓ SUBMITTED ITEM(S)
3	3.50-3.96	FAST-396-TAP-Q	.075 (14)	.048 (18)	5/8	8	
4	4.50-4.80	FAST-480-TAP-Q	.075 (14)	.048 (18)	5/8	8	
	4.80-5.10	FAST-510-TAP-Q				8	
	5.05-5.30	FAST-530-TAP-Q				8	
6	6.60-7.00	FAST-700-TAP-Q	.075 (14)	.048 (18)	5/8	8	
	6.90-7.30	FAST-730-TAP-Q				8	
	7.10-7.50	FAST-750-TAP-Q				8	
8	8.63-9.05	FAST-905-TAP-Q	.075 (14)	.048 (18)	5/8	8	
	9.05-9.45	FAST-945-TAP-Q				8	
	9.30-9.70	FAST-970-TAP-Q				12	
						12	
10	10.75-11.15	FAST-1115-TAP-Q	.105 (12)	.063 (16)	5/8	8	
	11.05-11.45	FAST-1145-TAP-Q				8	
	11.75-12.15	FAST-1215-TAP-Q				8	
						12	
12	12.75-13.20 13.10-13.50 14.00-14.40	FAST-1320-TAP-Q FAST-1350-TAP-Q FAST-1440-TAP-Q	.105 (12)	.063 (16)	5/8	12	
				.048 (18)	5/8	8	
				.048 (18)	5/8	8	
				.048 (18)	5/8	8	
				.048 (18)	5/8	12	
				.048 (18)	5/8	12	
14	15.10-15.50 15.30-15.70 15.80-16.20 16.48-16.88	FAST-1550-TAP-Q FAST-1570-TAP-Q FAST-1620-TAP-Q FAST-1688-TAP-Q	.105 (12)	.063 (16)	5/8	14	
				.048 (18)	5/8	10	
				.048 (18)	5/8	10	
				.048 (18)	5/8	10	
				.048 (18)	5/8	12	
				.048 (18)	5/8	12	

OUTLET TAP CODE

CC (AWWA) THREAD		
THREAD	CODE NUMBER	✓ SUBMITTED ITEM(S)
1/2" CC	CC1	
3/4" CC	CC3	
1" CC	CC4	
1-1/4" CC	***CC5	
1-1/2" CC	CC6	
2" CC	CC7	

IP THREAD

THREAD	CODE NUMBER	✓ SUBMITTED ITEM(S)
3/4" IP	IP3	
1" IP	IP4	
1-1/4" IP	***IP5	
1-1/2" IP	IP6	
2" IP	IP7	

*** Contact factory for availability

Highlighted ranges are recommended for ductile iron pipe and C900/C905 PVC applications.

** To order: Add outlet tap code to catalog number. Example: The complete FAST catalog number for an 8" pipe (9.05 O.D.) with a 3/4" CC tap is FAST-945-CC3-Q.

FEATURES

- Body, lifter bar, nuts, washers, straps and UNC threaded studs are made of type 316 stainless steel.
- All welds are fully passivated for corrosion resistance
- Tapping sleeves rated for 250 psi working pressure on 3"-12"
- Outlet gasket is NBR (Buna-N) rubber per ASTM D2000

The Ford Meter Box Company considers the information in this submittal form to be correct at the time of publication. Item and option availability, including specifications, are subject to change without notice. Please verify that your product information is current. Our standard warranty applies.



The Ford Meter Box Company, Inc.

P.O. Box 443, Wabash, Indiana U.S.A. 46992-0443

Phone: 260-563-3171 / Fax: 800-826-3487

Overseas Fax: 260-563-0167

www.fordmeterbox.com

09/12/25

Submitted By: