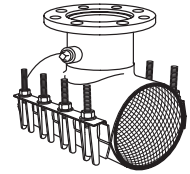


SUBMITTAL INFORMATION

Stainless Steel Tapping Sleeve - (FAST-xxx-x-J style)



TYPE 316 STAINLESS STEEL TAPPING SLEEVE

Flange - Type 316 stainless steel with recess per MSS SP-60 to accept standard tapping valves. Flange conforms to AWWA C228 Class D ANSI 150# drilling. Optional carbon steel flange, per AWWA C207, is available.

Lifter bar - Type 316 stainless steel provides a heavy bearing surface for nuts.

Studs, nuts, & washers - Type 316 stainless steel per ASTM A193 and A194. Nuts and washers are coated to prevent galling.

Outlet Pipe - Type 316 stainless steel.

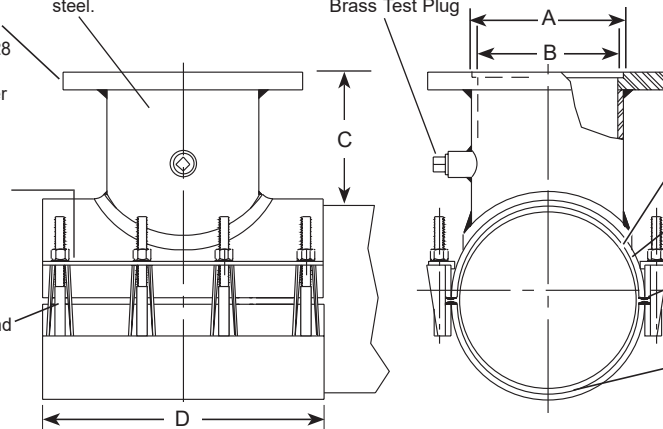
3/4-14 No-Lead Brass Test Plug

Outlet Gasket - Virgin NBR (Buna-N) compounded for water service, per ASTM D2000. Outlet gasket ensures complete seal of outlet area.

Full Gasket - Gridded Virgin NBR (Buna-N) compounded for water service, per ASTM D2000. Full gasket gives 360° pipe coverage.

Armors - Heavy gauge stainless steel, vulcanized to gasket to bridge the gap between lugs.

Body & Strap - Type 316 stainless steel. All welds are fully passivated to restore stainless characteristics.



NOM. PIPE SIZE	SLEEVE O.D. RANGE (IN.)	CATALOG NUMBER**	**FLANGE SIZE	NOMINAL DIMENSIONS - INCHES				MIN. NUMBER OF STUDS	STUD DIA.	APPROX. WT. LBS.	✓ SUBMITTED ITEM(S)
				COUNTER-BORE ID	OUTLET PIPE ID	TOP OF PIPE TO TOP OF FLANGE	WIDTH				
				A	B	C	D				
3"	3.50-3.96	FAST-396-x-J	2	3-1/16	3-1/4	5-3/8	15	8	5/8"	25	
			3	4-1/16	3-1/4	4-15/16	15	8	5/8"	26	
4"	4.50-4.80	FAST-480-x-J	2	3-1/16	3-1/4	5-3/8	15	8	5/8"	27	
	4.80-5.10	FAST-510-x-J	3	4-1/16	3-1/4	4-15/16	15	8	5/8"	28	
	5.05-5.30	FAST-530-x-J	4	5-1/16	4-1/4	4-15/16	15	8	5/8"	20	
			2	3-1/16	3-1/4	5-3/8	15	8	5/8"	32	
6"	6.60-7.00	FAST-700-x-J	3	4-1/16	3-1/4	4-15/16	15	8	5/8"	33	
	6.90-7.30	FAST-730-x-J	4	5-1/16	4-1/4	4-15/16	15	8	5/8"	34	
	7.10-7.50	FAST-750-x-J	6	7-1/16	6-13/32	5-1/4	15	8	5/8"	38	
			2	3-1/16	3-1/4	5-3/8	15	8	5/8"	37	
8"	8.63-9.05	FAST-905-x-J	3	4-1/16	3-1/4	4-15/16	15	8	5/8"	38	
	9.05-9.45	FAST-945-x-J	4	5-1/16	4-1/4	4-15/16	15	8	5/8"	39	
	9.30-9.70	FAST-970-x-J	6	7-1/16	6-13/32	5-1/4	15	8	5/8"	42	
			8	9-1/16	8-13/32	5-3/8	20	12	5/8"	58	
10"	10.75-11.15	FAST-1115-x-J	2	3-1/16	3-1/4	5-3/8	15	8	5/8"	39	
	11.05-11.45	FAST-1145-x-J	3	4-1/16	3-1/4	4-15/16	15	8	5/8"	40	
	11.75-12.15	FAST-1215-x-J	4	5-1/16	4-1/4	4-15/16	15	8	5/8"	41	
			6	7-1/16	6-13/32	5-1/4	15	8	5/8"	45	
12"	12.75-13.20	FAST-1320-x-J	8	9-1/16	8-13/32	5-3/8	20	12	5/8"	65	
	13.10-13.50	FAST-1350-x-J	10	11-1/16	10-15/32	5-7/8	20	12	5/8"	85	
	14.00-14.40	FAST-1440-x-J	2	3-1/16	3-1/4	5-3/8	15	8	5/8"	42	
			3	4-1/16	3-1/4	4-15/16	15	8	5/8"	43	
14"	15.10-15.50	FAST-1550-x-J	4	5-1/16	4-1/4	4-15/16	15	8	5/8"	44	
	15.30-15.70	FAST-1570-x-J	6	7-1/16	6-13/32	5-1/4	15	8	5/8"	48	
	15.80-16.20	FAST-1620-x-J	8	9-1/16	8-13/32	5-3/8	20	12	5/8"	68	
	16.48-16.88	FAST-1688-x-J	10	11-1/16	10-15/32	5-7/8	20	12	5/8"	88	
			12	13-1/16	12-13/32	6	24	14	5/8"	116	
			2	3-1/16	3-1/4	5-3/8	16	10	5/8"	64	
			3	4-1/16	3-1/4	4-15/16	16	10	5/8"	65	
			4	5-1/16	4-1/4	4-15/16	16	10	5/8"	66	
			6	7-1/16	6-13/32	5-1/4	16	10	5/8"	71	
			8	9-1/16	8-13/32	5-3/8	20	12	5/8"	88	
			10	11-1/16	10-15/32	5-7/8	20	12	5/8"	96	
			12	13-1/16	12-13/32	6	24	14	5/8"	125	

Highlighted ranges are recommended for ductile iron pipe and C900/C905 PVC applications.

** To order: Add flanged outlet size to catalog number. Example: The complete FAST catalog number for an 8" pipe (9.05 O.D.) with a 6" stainless steel flange is FAST-945-6-J. For a carbon steel flange, add "A" to the catalog number. Example: FAST-945-6A-J

FEATURES

- Body, straps and UNC threaded studs are made of type 316 stainless steel. Flange can be either ASTM A240 type 316 stainless steel or ASTM A36 carbon steel
- All sleeves are fully passivated for corrosion resistance
- 3"-12" rated to 250 psi, 14" rated to 200 psi. Rating not to exceed the pressure rating of the pipe.
- Outlet gasket is NBR (Buna-N) rubber per ASTM D2000
- Certified to ANSI/NSF standard 61

The Ford Meter Box Company considers the information in this submittal form to be correct at the time of publication. Item and option availability, including specifications, are subject to change without notice. Please verify that your product information is current.



The Ford Meter Box Company, Inc.
P.O. Box 443, Wabash, Indiana U.S.A. 46992-0443
Phone: 260-563-3171 / Fax: 800-826-3487
Overseas Fax: 260-563-0167
www.fordmeterbox.com

09/14/22

Submitted By: