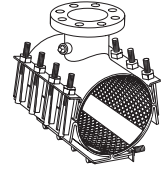


# SUBMITTAL INFORMATION

## Stainless Steel Tapping Sleeve - (FASTP-xxxx-x-U100 style)



### STAINLESS STEEL TAPPING SLEEVE FOR HDPE PIPE

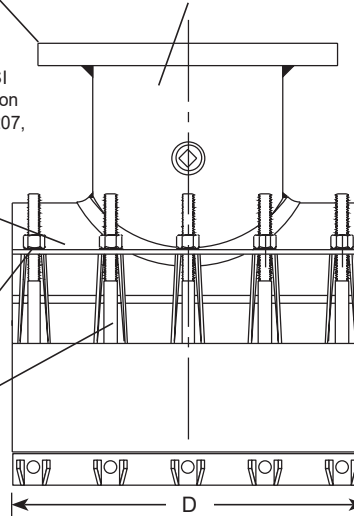
Flange - Stainless steel with recess per MSS SP-60 to accept standard tapping valves. Flange conforms to AWWA C228 Class D ANSI 150# drilling. Optional carbon steel flange, per AWWA C207, is available.

Lifter bar - Type 304 stainless steel provides a heavy bearing surface for nuts

Washers - Belleville spring washer 17-7 PH stainless steel

Studs and nuts - Type 304 stainless steel per ASTM A193 and A194. Nuts are coated to prevent galling.

Outlet Pipe - Type 304 stainless steel



3/4-14 No-Lead Brass Test Plug

Armors - Heavy gauge Type 304 stainless steel are vulcanized to gasket to bridge the gap between lugs.

Outlet Gasket - Virgin NBR (Buna-N) compounded for water service, per ASTM D2000. Outlet gasket ensures complete seal of outlet area.

Body & Strap — Type 304 stainless steel. All welds are fully passivated to restore stainless characteristics.

Full Gasket - Gridded Virgin SBR compounded for water service, per ASTM D2000. Full gasket gives 360° pipe coverage.

| NOM. PIPE SIZE (IN.) | SLEEVE O.D. RANGE (IN.) | CATALOG NUMBER**  | FLANGE SIZE (IN.) | NOMINAL DIMENSIONS - INCHES |                |                              |       | MIN. NUMBER OF BOLTS | SIZE OF BOLTS | APPROX. WT. LBS. | ✓ SUBMITTED ITEM(S) |
|----------------------|-------------------------|---|-------------------|-----------------------------|----------------|------------------------------|-------|----------------------|---------------|------------------|---------------------|
|                      |                         |   |                   | COUNTER-BORE ID             | OUTLET PIPE ID | TOP OF PIPE TO TOP OF FLANGE | WIDTH |                      |               |                  |                     |
|                      |                         |   |                   | A                           | B              | C                            | D     |                      |               |                  |                     |
| 16                   | 16.00<br>17.40          | FASTP-1600-x-U100<br>FASTP-1740-x-U100                      | 2                 | 3-1/16                      | 3-1/4          | 5-3/8                        | 16    | 15                   | 5/8"          | 73               |                     |
|                      |                         |   | 3                 | 4-1/16                      | 3-1/4          | 4-15/16                      | 16    | 15                   | 5/8"          | 74               |                     |
|                      |                         |   | 4                 | 5-1/16                      | 4-1/4          | 4-15/16                      | 16    | 15                   | 5/8"          | 75               |                     |
|                      |                         |   | 6                 | 7-1/16                      | 6-13/32        | 5-1/4                        | 16    | 15                   | 5/8"          | 78               |                     |
|                      |                         |   | 8                 | 9-1/16                      | 8-13/32        | 5-3/8                        | 20    | 14                   | 5/8"          | 100              |                     |
|                      |                         |   | 10                | 11-1/16                     | 10-15/32       | 5-7/8                        | 20    | 14                   | 5/8"          | 114              |                     |
| 18                   | 18.00<br>19.50          | FASTP-1800-x-U100<br>FASTP-1950-x-U100                      | 2                 | 3-1/16                      | 3-1/4          | 5-3/8                        | 16    | 15                   | 5/8"          | 79               |                     |
|                      |                         |   | 3                 | 4-1/16                      | 3-1/4          | 4-15/16                      | 16    | 15                   | 5/8"          | 80               |                     |
|                      |                         |   | 4                 | 5-1/16                      | 4-1/4          | 4-15/16                      | 16    | 15                   | 5/8"          | 81               |                     |
|                      |                         |   | 6                 | 7-1/16                      | 6-13/32        | 5-1/4                        | 16    | 15                   | 5/8"          | 86               |                     |
|                      |                         |   | 8                 | 9-1/16                      | 8-13/32        | 5-3/8                        | 20    | 14                   | 5/8"          | 106              |                     |
|                      |                         |   | 10                | 11-1/16                     | 10-15/32       | 5-7/8                        | 20    | 14                   | 5/8"          | 119              |                     |
| 20                   | 20.00<br>21.60          | FASTP-2000-x-U100<br>FASTP-2160-x-U100                      | 2                 | 3-1/16                      | 3-1/4          | 5-3/8                        | 16    | 15                   | 5/8"          | 85               |                     |
|                      |                         |   | 3                 | 4-1/16                      | 3-1/4          | 4-15/16                      | 16    | 15                   | 5/8"          | 86               |                     |
|                      |                         |   | 4                 | 5-1/16                      | 4-1/4          | 4-15/16                      | 16    | 15                   | 5/8"          | 87               |                     |
|                      |                         |   | 6                 | 7-1/16                      | 6-13/32        | 5-1/4                        | 16    | 15                   | 5/8"          | 92               |                     |
|                      |                         |   | 8                 | 9-1/16                      | 8-13/32        | 5-3/8                        | 20    | 14                   | 5/8"          | 114              |                     |
|                      |                         |   | 10                | 11-1/16                     | 10-15/32       | 5-7/8                        | 20    | 14                   | 5/8"          | 124              |                     |
| 24                   | 24.00<br>25.80<br>26.00 | FASTP-2400-x-U100<br>FASTP-2580-x-U100<br>FASTP-2600-x-U100 | 2                 | 3-1/16                      | 3-1/4          | 5-3/8                        | 16    | 15                   | 5/8"          | 97               |                     |
|                      |                         |   | 3                 | 4-1/16                      | 3-1/4          | 4-15/16                      | 16    | 15                   | 5/8"          | 98               |                     |
|                      |                         |   | 4                 | 5-1/16                      | 4-1/4          | 4-15/16                      | 16    | 15                   | 5/8"          | 99               |                     |
|                      |                         |   | 6                 | 7-1/16                      | 6-13/32        | 5-1/4                        | 16    | 15                   | 5/8"          | 103              |                     |
|                      |                         |   | 8                 | 9-1/16                      | 8-13/32        | 5-3/8                        | 20    | 14                   | 5/8"          | 127              |                     |
|                      |                         |   | 10                | 11-1/16                     | 10-15/32       | 5-7/8                        | 20    | 14                   | 5/8"          | 135              |                     |
|                      |                         |   | 12                | 13-1/16                     | 12-13/32       | 6                            | 24    | 16                   | 5/8"          | 171              |                     |

\*\* To order: Add flanged outlet size to catalog number. Example: The complete FASTP catalog number for an 20" pipe (21.60 O.D.) with a 12" stainless steel flange is FASTP-2160-12-U100. For a carbon steel flange, add "A" to the catalog number. Example: FASTP-2160-12A-U100

#### FEATURES

- Body, straps and UNC threaded studs are made of type 304 stainless steel
- Flange can be either type 304 stainless steel or ASTM A36 carbon steel
- All sleeves are fully passivated for corrosion resistance
- Outlet gasket is NBR (Buna-N) rubber per ASTM D2000
- Belleville spring washers allow for limited pipe expansion and contraction
- 16" rated to 200 psi, 18"-20" rated to 175 psi, 24" rated to 150 psi. Rating not to exceed the pressure rating of the pipe.
- Certified to ANSI/NSF Standard 61
- 100% manufactured in the United States of America

The Ford Meter Box Company considers the information in this submittal form to be correct at the time of publication. Item and option availability, including specifications, are subject to change without notice. Please verify that your product information is current. Our standard warranty applies.



**The Ford Meter Box Company, Inc.**  
P.O. Box 443, Wabash, Indiana U.S.A. 46992-0443  
Phone: 260-563-3171 / Fax: 800-826-3487  
Overseas Fax: 260-563-0167  
www.fordmeterbox.com

09/16/22

Submitted By: