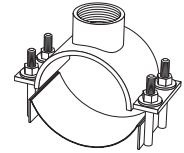


SUBMITTAL INFORMATION

Fabricated Steel Saddle - (FC202-xxxx-TAP-EPDM style)



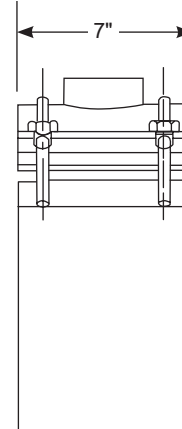
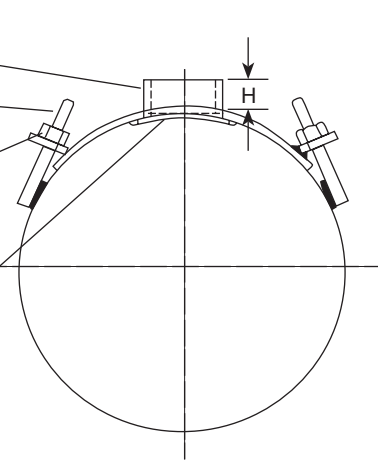
36" THROUGH 60" FABRICATED STEEL SADDLE WITH STAINLESS STEEL BAND

Threads - CC or IP
per AWWA C800

5/8" Studs - Type 304
Stainless Steel

Heavy hex nuts and
washers - Nuts are
coated to prevent galling

Gasket - EPDM Rubber
per ASTM D2000



Body - Fabricated Steel
Finish - Fusion-bonded
epoxy

Band - Type 304 Stainless
Steel

NOM. PIPE SIZE	ACTUAL PIPE O.D.	BOSS HEIGHT "H"	APPROX. WT. LBS.	CATALOG NUMBER	✓ SUBMITTED ITEM(S)
36"	38.30"	1-1/2"	35.0	FC202-3830-TAP-EPDM	
42"	44.50"	1-1/2"	37.0	FC202-4450-TAP-EPDM	
48"	50.80"	1-1/2"	39.0	FC202-5080-TAP-EPDM	
54"	57.56"	1-1/2"	42.0	FC202-5756-TAP-EPDM	
60"	60.00"	1-1/2"	43.0	FC202-6000-TAP-EPDM	
60"	61.60"	1-1/2"	45.0	FC202-6160-TAP-EPDM	

OUTLET TAP CODE

CC (AWWA) THREAD			IP THREAD		
THREAD	CODE NUMBER	✓ SUBMITTED ITEM(S)	THREAD	CODENUMBER	✓ SUBMITTED ITEM(S)
3/4" CC	CC3		3/4" IP	IP3	
1" CC	CC4		1" IP	IP4	
1-1/4" CC	CC5		1-1/4" IP	IP5	
1-1/2" CC	CC6		1-1/2" IP	IP6	
2" CC	CC7		2" IP	IP7	
			2-1/2" IP	IP8	
			3" IP	IP9	
			4" IP	IP11	

FEATURES

- Body made of carbon steel per ASTM A36
- Finish on saddle body is fusion-bonded epoxy coating - NSF 61 approved
- Double wide band and 5/8" UNC threaded studs of type 304 stainless steel
- Conforms to AWWA C800

The Ford Meter Box Company considers the information in this submittal form to be correct at the time of publication. Item and option availability, including specifications, are subject to change without notice. Please verify that your product information is current. Our standard warranty applies.



The Ford Meter Box Company, Inc.
P.O. Box 443, Wabash, Indiana U.S.A. 46992-0443
Phone: 260-563-3171 / Fax: 800-826-3487
Overseas Fax: 260-563-0167
www.fordmeterbox.com

09/26/22

Submitted By: