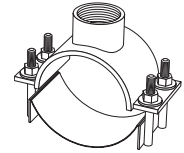


SUBMITTAL INFORMATION

Fabricated Steel Saddle - (FC202-xxxx-TAP-Q-U100 style)



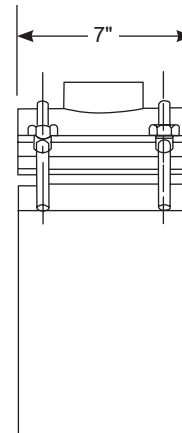
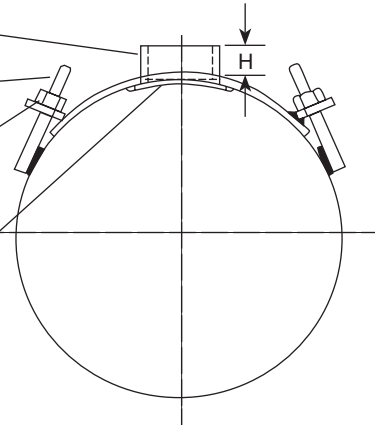
FABRICATED STEEL SADDLE WITH 316 STAINLESS STEEL BAND

Threads - CC or Iron
Pipe per AWWA C800

5/8" Studs Type 316
Stainless Steel per ASTM
A193 and A194

Heavy hex nuts and washers -
Type 316 stainless steel per
ASTM A193 and A194. Nuts are
coated to prevent galling

Gasket - NBR (Buna-N)
Rubber per ASTM D2000



Body - Fabricated Steel
Finish - Fusion-bonded
epoxy

Band - Type 316 Stainless
Steel

| NOM. PIPE SIZE (IN.) | ACTUAL PIPE O.D. (IN.) | BOSS HEIGHT H (IN.) | APPROX. WT. LBS. | CATALOG NUMBER | ✓ SUBMITTED ITEM(S) |
|-------------------------|------------------------------|---------------------------|---------------------|-----------------------|------------------------|
| 36 | 38.30 | 1-1/2 | 35.0 | FC202-3830-TAP-Q-U100 | |
| 42 | 44.50 | 1-1/2 | 37.0 | FC202-4450-TAP-Q-U100 | |
| 48 | 48.00 | 1-1/2 | 37.2 | FC202-4800-TAP-Q-U100 | |
| | 50.80 | 1-1/2 | 39.0 | FC202-5080-TAP-Q-U100 | |
| 54 | 57.56 | 1-1/2 | 42.0 | FC202-5756-TAP-Q-U100 | |
| 60 | 61.60 | 1-1/2 | 45.0 | FC202-6160-TAP-Q-U100 | |

OUTLET TAP CODE

| CC (AWWA) THREAD | | |
|------------------|-------------|---------------------|
| THREAD | CODE NUMBER | ✓ SUBMITTED ITEM(S) |
| 3/4" CC | CC3 | |
| 1" CC | CC4 | |
| 1-1/4" CC | CC5 | |
| 1-1/2" CC | CC6 | |
| 2" CC | CC7 | |

| IP THREAD | | |
|-----------|-------------|---------------------|
| THREAD | CODE NUMBER | ✓ SUBMITTED ITEM(S) |
| 3/4" IP | IP3 | |
| 1" IP | IP4 | |
| 1-1/4" IP | IP5 | |
| 1-1/2" IP | IP6 | |
| 2" IP | IP7 | |
| 2-1/2" IP | IP8 | |

FEATURES

- Body made of carbon steel per ASTM A36
- Finish on saddle body is fusion-bonded epoxy coating - NSF 61 certified
- Double wide band and 5/8" UNC threaded studs of type 316 stainless steel
- Conforms to AWWA C800
- 100% manufactured in the United States of America

The Ford Meter Box Company considers the information in this submittal form to be correct at the time of publication. Item and option availability, including specifications, are subject to change without notice. Please verify that your product information is current. Our standard warranty applies.



The Ford Meter Box Company, Inc.

P.O. Box 443, Wabash, Indiana U.S.A. 46992-0443

Phone: 260-563-3171 / Fax: 800-826-3487

Overseas Fax: 260-563-0167

www.fordmeterbox.com

11/19/24

Submitted By: