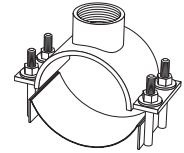


SUBMITTAL INFORMATION

Fabricated Steel Saddle - (FC202-xxxx-TAP-U100 style)



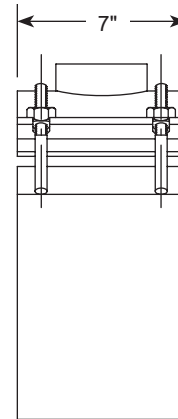
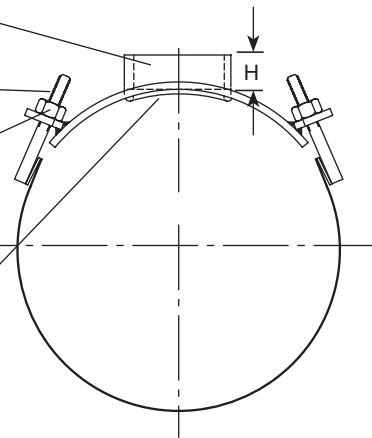
36"-60" FABRICATED STEEL SADDLE WITH STAINLESS STEEL BAND

Threads - CC or Iron
Pipe per AWWA C800

5/8" Studs Type 304
Stainless Steel

Heavy hex nuts and
washers - Nuts are
coated to prevent galling

Gasket - NBR (Buna-N)
Rubber per ASTM D2000



Body - Fabricated Steel
Finish - Fusion-bonded
epoxy

Band - Type 304 Stainless
Steel

NOM. PIPE SIZE	ACTUAL PIPE O.D. (In.)	BOSS HEIGHT H	APPROX. WT. LBS.	CATALOG NUMBER	✓ SUBMITTED ITEM(S)
36"	38.30	1-1/2"	35.0	FC202-3830-TAP-U100	
	38.40	1-1/2"	36.0	FC202-3840-TAP-U100	
42"	44.50	1-1/2"	37.0	FC202-4450-TAP-U100	
48"	48.00	1-1/2"	37.2	FC202-4800-TAP-U100	
	50.80	1-1/2"	39.0	FC202-5080-TAP-U100	
54"	57.56	1-1/2"	42.0	FC202-5756-TAP-U100	
60"	61.60	1-1/2"	45.0	FC202-6160-TAP-U100	

OUTLET TAP CODE

CC (AWWA) THREAD		
THREAD	CODE NUMBER	✓ SUBMITTED ITEM(S)
3/4" CC	CC3	
1" CC	CC4	
1-1/4" CC	CC5	
1-1/2" CC	CC6	
2" CC	CC7	

IP THREAD		
THREAD	CODE NUMBER	✓ SUBMITTED ITEM(S)
3/4" IP	IP3	
1" IP	IP4	
1-1/4" IP	IP5	
1-1/2" IP	IP6	
2" IP	IP7	
2-1/2" IP	IP8	
3" IP	IP9	
4" IP	IP11	

FEATURES

- Body made of carbon steel per ASTM A36
- Finish on saddle body is fusion-bonded epoxy coating - NSF 61 approved
- Double wide band and 5/8" UNC threaded studs of type 304 stainless steel
- Conforms to AWWA C800
- 100% manufactured in the United States of America

The Ford Meter Box Company considers the information in this submittal form to be correct at the time of publication. Item and option availability, including specifications, are subject to change without notice. Please verify that your product information is current. Our standard warranty applies.



The Ford Meter Box Company, Inc.

P.O. Box 443, Wabash, Indiana U.S.A. 46992-0443

Phone: 260-563-3171 / Fax: 800-826-3487

Overseas Fax: 260-563-0167

www.fordmeterbox.com

10/05/22

Submitted By: