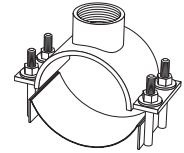


SUBMITTAL INFORMATION

Fabricated Steel Saddle - (FC202-xxxx-TAP style)

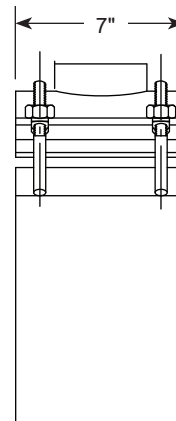
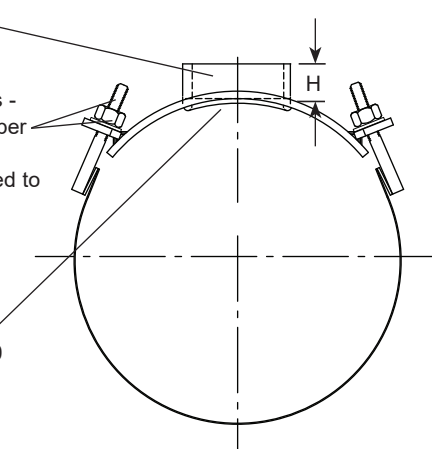


FABRICATED STEEL SADDLE WITH STAINLESS STEEL BAND

Threads - CC or Iron
Pipe per AWWA C800

Nuts, Washers and Studs -
Type 304 stainless steel per
ASTM A193 and A194.
Heavy hex nuts are coated to
prevent galling.

Gasket - NBR (Buna-N)
Rubber per ASTM D2000



Body - Fabricated Steel
Finish - Fusion-bonded
epoxy

Band - Type 304 Stainless
Steel

NOM. PIPE SIZE (IN.)	ACTUAL PIPE O.D. (IN.)	BOSS HEIGHT H (IN.)	APPROX. WT. LBS.	CATALOG NUMBER	✓ SUBMITTED ITEM(S)
30	30.00	1-1/2	19.5	FC202-3000-TAP	
36	38.30	1-1/2	35.0	FC202-3830-TAP	
	38.40	1-1/2	36.0	FC202-3840-TAP	
42	42.00	1-1/2	37.0	FC202-4200-TAP	
	44.50	1-1/2	37.0	FC202-4450-TAP	
48	48.00	1-1/2	37.2	FC202-4800-TAP	
	50.80	1-1/2	39.0	FC202-5080-TAP	
54	57.56	1-1/2	42.0	FC202-5756-TAP	
60	60.00	1-1/2	44.0	FC202-6000-TAP	
	61.60	1-1/2	45.0	FC202-6160-TAP	

OUTLET TAP CODE

CC (AWWA) THREAD		
THREAD	CODE NUMBER	✓ SUBMITTED ITEM(S)
3/4" CC	CC3	
1" CC	CC4	
1-1/4" CC	CC5	
1-1/2" CC	CC6	
2" CC	CC7	

IP THREAD		
THREAD	CODE NUMBER	✓ SUBMITTED ITEM(S)
3/4" IP	IP3	
1" IP	IP4	
1-1/4" IP	IP5	
1-1/2" IP	IP6	
2" IP	IP7	
2-1/2" IP	IP8	
3" IP	IP9	
4" IP	IP11	

FEATURES

- Body made of carbon steel per ASTM A36
- Finish on saddle body is fusion-bonded epoxy coating - NSF 61 certified
- Double wide band and 5/8" UNC threaded studs of type 304 stainless steel
- Conforms to AWWA C800
- Rated for the lesser of 150 psi or the pressure rating of the pipe

The Ford Meter Box Company considers the information in this submittal form to be correct at the time of publication. Item and option availability, including specifications, are subject to change without notice. Please verify that your product information is current. Our standard warranty applies.



The Ford Meter Box Company, Inc.

P.O. Box 443, Wabash, Indiana U.S.A. 46992-0443

Phone: 260-563-3171 / Fax: 800-826-3487

Overseas Fax: 260-563-0167

www.fordmeterbox.com

11/21/25

Submitted By: