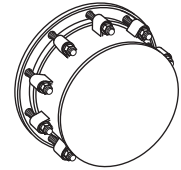
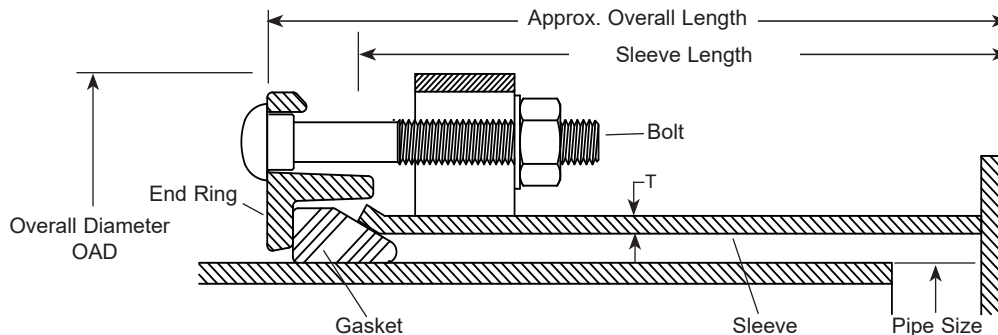


SUBMITTAL INFORMATION

Fabricated Steel Coupling - (FC4-xxxx-BxxD-BEC-U100 style)



30"-60" STYLE FC4 COUPLINGS WITH UNTAPPED END CAP



NOM. PIPE SIZE	PIPE O.D. (IN.)	CENTER SLEEVE		APPROX. OVERALL LGTH.	BOLT			APPROX. Wt. LBS.	OAD	RATED WORKING PRESSURE	CATALOG NUMBER	✓ SUBMITTED ITEM(S)
		LGTH.	(T)HICKNESS		DIA.	LGTH.	QTY.					
30"	30.00	7"	3/8"	9-1/8"	5/8"	5"	16	447	34-5/8"	150	FC4-3000-B07D-BEC-U100	
	30.00	10"		12-1/8"							FC4-3000-B10D-BEC-U100	
36"	36.00	7"	3/8"	9-1/8"			18	646	40-5/8"		FC4-3600-B07D-BEC-U100	
	36.00	10"		12-1/8"							FC4-3600-B10D-BEC-U100	
42"	42.00	7"	3/8"	9-1/8"			20	843	47-1/8"		FC4-4200-B07D-BEC-U100	
	42.00	10"		12-1/8"							FC4-4200-B10D-BEC-U100	
48"	48.00	7"	3/8"	9-1/8"			22	970	53-1/8"		FC4-4800-B07D-BEC-U100	
	48.00	10"		12-1/8"							FC4-4800-B10D-BEC-U100	
54"	54.00	7"	3/8"	9-1/8"			24	1095	60-1/8"		FC4-5400-B07D-BEC-U100	
	54.00	10"		12-1/8"							FC4-5400-B10D-BEC-U100	
60"	61.00	7"	3/8"	9-1/8"			26	1250	66-1/8"		FC4-6100-B07D-BEC-U100	
	61.00	10"		12-1/8"							FC4-6100-B10D-BEC-U100	

Note: Flexible couplings do not restrain axial forces on piping.

FEATURES

- Center Sleeve - Carbon steel per ASTM A36
- End Rings - Carbon steel per AISI 1018/1020
- Bolts and Nuts - Type 316 stainless steel per ASTM A193 and A194
- Coating - NSF 61 approved epoxy
- Gasket - Extruded EPDM rubber per ASTM D2000
- Complies with AWWA C219 standards
- 100% manufactured in the United States of America

The Ford Meter Box Company considers the information in this submittal form to be correct at the time of publication. Item and option availability, including specifications, are subject to change without notice. Please verify that your product information is current. Our standard warranty applies.



The Ford Meter Box Company, Inc.
P.O. Box 443, Wabash, Indiana U.S.A. 46992-0443
Phone: 260-563-3171 / Fax: 800-826-3487
Overseas Fax: 260-563-0167
www.fordmeterbox.com

01/24/22

Submitted By: