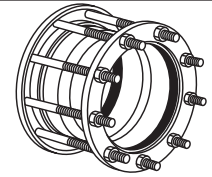
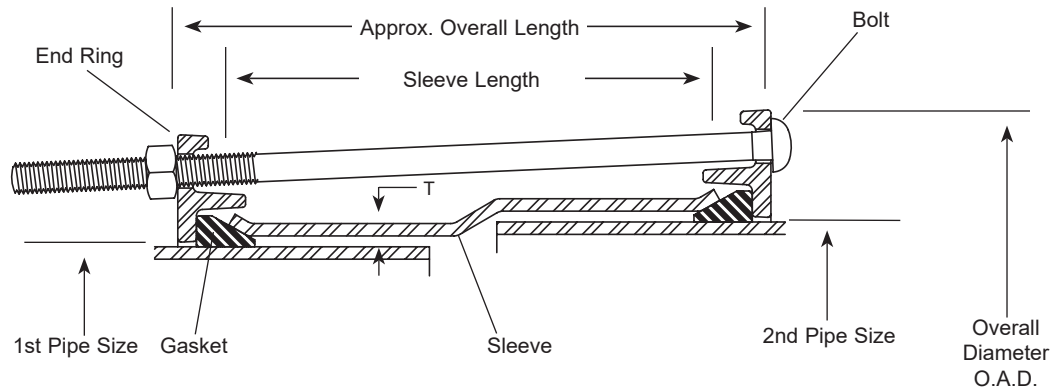


SUBMITTAL INFORMATION

Fabricated Steel Transition Coupling - (FC5-xxxx-xxxx-AxxP style)



30"-36" STYLE FC5 COUPLINGS FOR JOINING PIPES WITH DIFFERENT O.D.'S



NOM. PIPE SIZE	1ST END PIPE O.D.	BY	2ND END PIPE O.D.	CENTER SLEEVE		BOLTS			APPROX. OVERALL LENGTH	OAD	APPROX. WT. LBS.	RATED WORKING PRESSURE	CATALOG NUMBER	✓ SUBMITTED ITEM(S)
				(T)THICKNESS	LGTH.	DIA.	LGTH.	QTY.						
30"	31.53		32.00	1/4"	15"	5/8"	17-1/2"	16	16-1/8"	36-5/8"	260	193	FC5-3153-3200-A15P	
	31.86		32.00		15"	5/8"	17-1/2"	16	16-1/8"	36-5/8"	260	193	FC5-3186-3200-A15P	
	32.00		32.15		15"	5/8"	17-1/2"	16	16-1/8"	37"	260	230	FC5-3200-3215-A15P	
	32.00		32.40		10"	5/8"	13-1/2"	16	11-1/8"	37"	184	230	FC5-3200-3240-A10P	
36"	38.22		38.30	1/4"	15"	5/8"	17-1/2"	18	16-1/8"	43-13/16"	320	193	FC5-3822-3830-A15P	
	38.30		38.70		10"	5/8"	13-1/2"	18	11-1/8"	43-13/16"	267	193	FC5-3830-3870-A10P	
	38.30		38.70		15"	5/8"	17-1/2"	18	16-1/8"	43-13/16"	341	193	FC5-3830-3870-A15P	
	38.30		39.60		15"	5/8"	20"	18	16-1/8"	44-23/32"	350	193	FC5-3830-3960-A15P	

Note: Flexible couplings do not restrain axial forces on piping.

FEATURES

- Center Sleeve - Carbon Steel per ASTM A36
- End Rings - Cold rolled carbon steel per AISI 1018-1020
- Bolts and Nuts - 304 stainless steel per ASTM A193 and A194
- Coating - Fusion bonded epoxy
- Gasket - Extruded SBR rubber per ASTM D2000
- Complies with AWWA C219 standards

The Ford Meter Box Company considers the information in this submittal form to be correct at the time of publication. Item and option availability, including specifications, are subject to change without notice. Please verify that your product information is current. Our standard warranty applies.



The Ford Meter Box Company, Inc.

P.O. Box 443, Wabash, Indiana U.S.A. 46992-0443

Phone: 260-563-3171 / Fax: 800-826-3487

Overseas Fax: 260-563-0167

www.fordmeterbox.com

01/11/23

Submitted By: