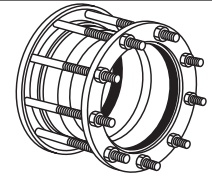
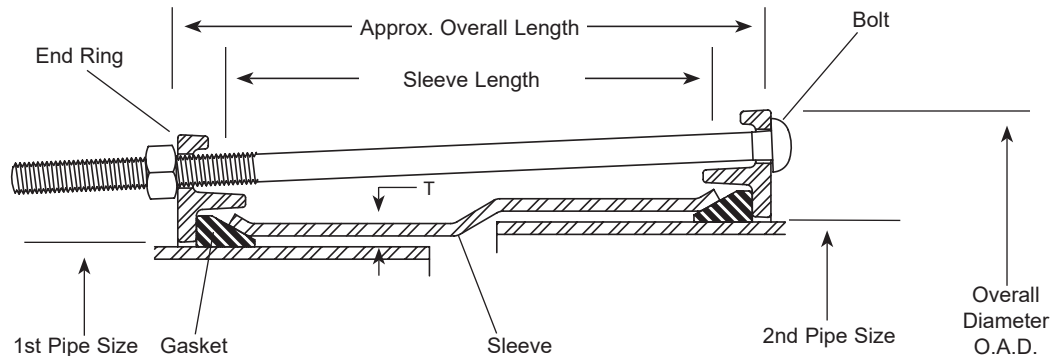


SUBMITTAL INFORMATION

Fabricated Steel Transition Coupling - (FC5-xxxx-xxxx-BxxE style)



30" - 48" STYLE FC5 COUPLINGS FOR JOINING PIPES WITH DIFFERENT O.D.'S



NOM. PIPE SIZE	1ST END PIPE O.D. (IN.)	BY	2ND END PIPE O.D. (IN.)	CENTER SLEEVE		BOLTS			APPROX. OVERALL LENGTH	OAD	APPROX. WT. (LBS.)	RATED WORKING PRESSURE (PSI)	CATALOG NUMBER	✓ SUBMITTED ITEM(S)
				(T)HICKNESS	LGTH.	DIA.	LGTH.	QTY.						
30"	30.00		32.00	3/8"	10"	5/8"	13-1/2"	16	11-1/8"	36-5/8"	184	230	FC5-3000-3200-B10E	
	32.00		32.25		10"	5/8"	13-1/2"	16	11-1/8"	36-5/8"	184	230	FC5-3200-3225-B10E	
	32.00		32.40		10"	5/8"	13-1/2"	16	11-1/8"	37"	184	230	FC5-3200-3240-B10E	
36"	38.30		38.70	3/8"	10"	5/8"	13-1/2"	18	11-1/8"	43-13/16"	267	193	FC5-3830-3870-B10E	
	38.30		38.70		15"	5/8"	17-1/2"	18	16-1/8"	43-13/16"	341	193	FC5-3830-3870-B15E	
42"	44.20		44.50	3/8"	10"	5/8"	13-1/2"	20	11-1/8"	49-5/8"	318	250	FC5-4420-4450-B10E	
	44.50		45.10		10"	5/8"	13-1/2"	20	11-1/8"	50-1/4"	320	250	FC5-4450-4510-B10E	
	44.50		45.10		15"	5/8"	17-1/2"	20	16-1/8"	50-1/4"	415	250	FC5-4450-4510-B15E	
	44.50		45.58		10"	5/8"	13-1/2"	20	11-1/8"	50-11/16"	320	250	FC5-4450-4558-B10E	
48"	50.50		50.80	3/8"	10"	5/8"	13-1/2"	22	11-1/8"	55-15/16"	363	220	FC5-5050-5080-B10E	
	50.80		51.05		10"	5/8"	13-1/2"	22	11-1/8"	56-1/8"	363	220	FC5-5080-5105-B10E	
	50.80		51.40		10"	5/8"	13-1/2"	22	11-1/8"	56-1/2"	363	220	FC5-5080-5140-B10E	
	50.80		51.40		15"	5/8"	17-1/2"	22	16-1/8"	56-1/2"	465	220	FC5-5080-5140-B15E	
	50.80		51.98		10"	5/8"	13-1/2"	22	11-1/8"	57-1/8"	363	220	FC5-5080-5198-B10E	

Note: Flexible couplings do not restrain axial forces on piping.

FEATURES

- Center Sleeve - Carbon steel per ASTM A36
- End Rings - Cold rolled carbon steel per AISI 1020
- Bolts and Nuts - High strength low alloy steel per ASTM A242 and AWWA C111
- Finish - Fusion-bonded epoxy coating - NSF61 approved
- Gasket - Extruded SBR rubber per ASTM D2000
- Complies with AWWA C219 standards

The Ford Meter Box Company considers the information in this submittal form to be correct at the time of publication. Item and option availability, including specifications, are subject to change without notice. Please verify that your product information is current. Our standard warranty applies.



The Ford Meter Box Company, Inc.
P.O. Box 443, Wabash, Indiana U.S.A. 46992-0443
Phone: 260-563-3171 / Fax: 800-826-3487
Overseas Fax: 260-563-0167
www.fordmeterbox.com

04/28/22

Submitted By: