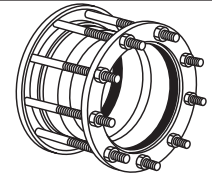
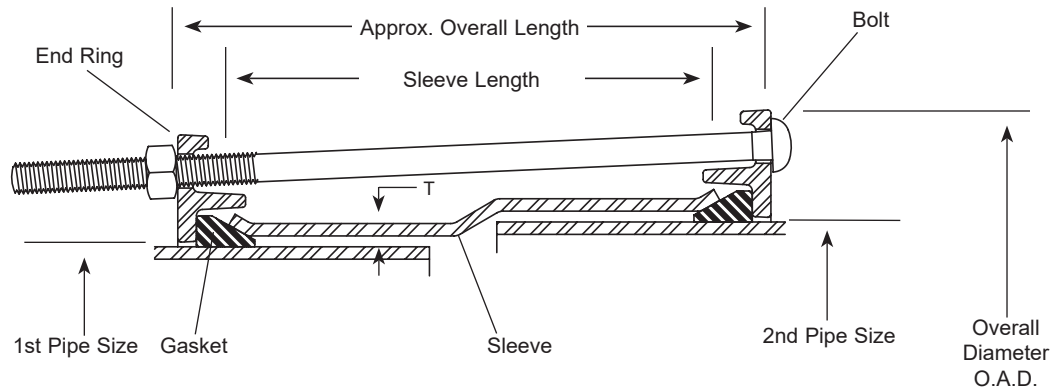


SUBMITTAL INFORMATION

Fabricated Steel Transition Coupling - (FC5-xxxx-xxxx-BxxY style)



30" - 48" STYLE FC5 COUPLINGS FOR JOINING PIPES WITH DIFFERENT O.D.'S



NOM. PIPE SIZE	1ST END PIPE O.D. (IN.)	BY	2ND END PIPE O.D. (IN.)	CENTER SLEEVE		BOLTS			APPROX. OVERALL LENGTH	OAD	APPROX. WT. (LBS.)	RATED WORKING PRESSURE (PSI)	CATALOG NUMBER	✓ SUBMITTED ITEM(S)
				(T) THICKNESS	LGTH.	DIA.	LGTH.	QTY.						
30"	32.00		32.25	3/8"	10"	5/8"	13-1/2"	16	11-1/8"	36-5/8"	184	230	FC5-3200-3225-B10Y	
40"	41.54		42.33	3/8"	10"	5/8"	13-1/2"	20	11-1/8"	47-1/8"	300	250	FC5-4154-4233-B10Y	
42"	42.00		44.50	3/8"	10"	5/8"	13-1/2"	20	11-1/8"	49-5/8"	318	250	FC5-4200-4450-B10Y	
42"	44.50		46.60	3/8"	10"	5/8"	13-1/2"	20	11-1/8"	51-3/8"	320	250	FC5-4450-4660-B10Y	
48"	47.64		48.00	3/8"	15"	5/8"	20"	22	16-1/8"	52-1/2"	443	220	FC5-4764-4800-B15Y	

Note: Flexible couplings do not restrain axial forces on piping.

FEATURES

- Center Sleeve - Carbon steel per ASTM A36
- End Rings - Cold rolled carbon steel per AISI 1020
- Bolts and Nuts - Type 304 stainless steel per ASTM A193 and A194
- Finish - Fusion-bonded epoxy coating - NSF61 approved
- Gasket - Extruded SBR rubber per ASTM D2000
- Complies with AWWA C219 standards

The Ford Meter Box Company considers the information in this submittal form to be correct at the time of publication. Item and option availability, including specifications, are subject to change without notice. Please verify that your product information is current. Our standard warranty applies.



The Ford Meter Box Company, Inc.

P.O. Box 443, Wabash, Indiana U.S.A. 46992-0443

Phone: 260-563-3171 / Fax: 800-826-3487

Overseas Fax: 260-563-0167

www.fordmeterbox.com

08/03/22

Submitted By: