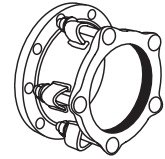


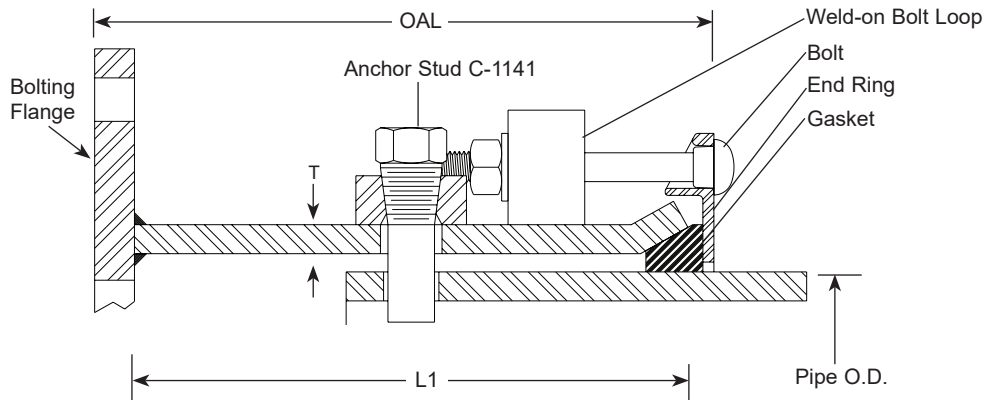
SUBMITTAL INFORMATION

Adapter Flanges - (FCA-xxx-DxV-AS2-U100 style)



STYLE FCA COUPLINGS FOR CONNECTING PLAIN END PIPE TO FLANGED FITTINGS

Standard FCA Coupling



NOM. PIPE SIZE	COUPLING GASKET RANGE (IN.)	FLG. SIZE	END RING BOLTS			SLEEVE LGTH L1	APPROX. OVERALL LENGTH	APPROX. WT. LBS.	RATED WORKING PRESSURE PSI	CATALOG NUMBER	✓ SUBMITTED ITEM(S)
			DIA.	LGTH.	QTY.						
4"	4.50 - 4.80	4"	5/8"	5"	3	8"	9-1/2"	35	175	FCA-480-D4V-AS2-U100	
6"	6.63 - 6.90	6"	5/8"	5"	4	10"	11-1/2"	45	175	FCA-690-D6V-AS2-U100	
8"	8.63 - 9.05	8"	5/8"	5"	5	11-1/2"	13-1/2"	55	175	FCA-905-D8V-AS2-U100	

Note: Flexible couplings do not restrain axial forces on piping.

FEATURES

- Sleeve - Carbon steel per ASTM A36
- Center Ring - Carbon steel per ASTM A36
- End Rings - Ductile iron per ASTM A536
- Bolts and Nuts - Type 316 stainless steel per ASTM A193 and A194
- Anchor Studs - Cold rolled steel per ASTM C-1141
- Flange - Class D AWWA C207
- Gasket - EPDM rubber per ASTM D2000
- Finish - Black shop coat - NSF 61 approved
- 100% manufactured in the United States of America

The Ford Meter Box Company considers the information in this submittal form to be correct at the time of publication. Item and option availability, including specifications, are subject to change without notice. Please verify that your product information is current. Our standard warranty applies.



The Ford Meter Box Company, Inc.

P.O. Box 443, Wabash, Indiana U.S.A. 46992-0443

Phone: 260-563-3171 / Fax: 800-826-3487

Overseas Fax: 260-563-0167

www.fordmeterbox.com

05/16/23

Submitted By: