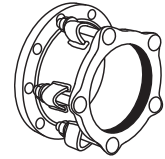
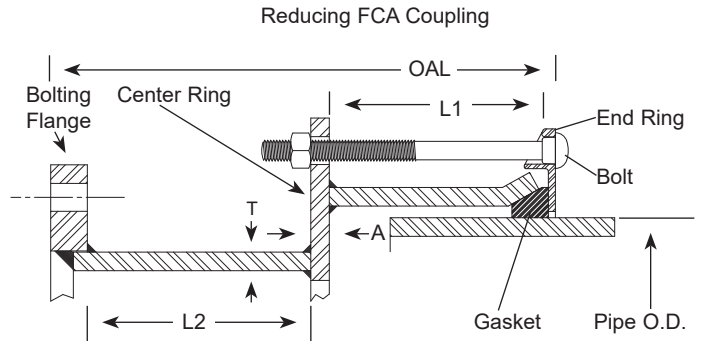
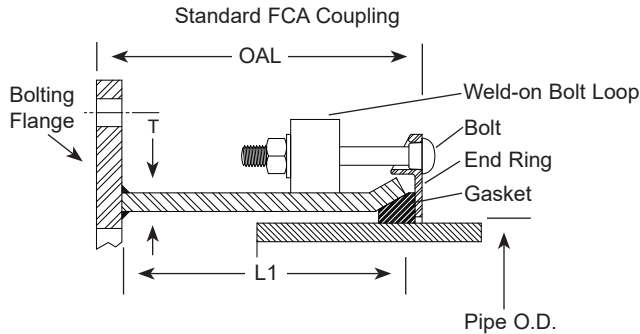


# SUBMITTAL INFORMATION

## Adapter Flanges - (FCA-xxxx-DxxR style)



### 14" - 18" STYLE FCA COUPLINGS FOR CONNECTING PLAIN END PIPE TO FLANGED FITTINGS



NOM. PIPE SIZE	COUPLING GASKET RANGE (IN.)	FLG SIZE	END RING BOLTS			DIMENSION		SLEEVE LGTH		APPROX. OVERALL LENGTH	APPROX. WT. LBS.	RATED WORKING PRESSURE	CATALOG NUMBER	✓ SUBMITTED ITEM(S)
			DIA.	LGTH.	QTY.	A	T	L1	L2					
14"	15.30	16"	5/8"	5"	9	n/a	1/4"	10"	n/a	11-1/2"	115	150	FCA-1530-D16R	
18"	18.70	18"	5/8"	5"	11	n/a	1/4"	10"	n/a	11-5/8"	155	150	FCA-1870-D18R	

**Note:** Flexible couplings do not restrain axial forces on piping.

## FEATURES

- Sleeve: Carbon steel per ASTM A36
- Center Ring: Carbon steel per ASTM A36
- End Ring: Ductile iron per ASTM A536 or carbon steel per ASTM A36
- Bolts and Nuts: High strength, low alloy steel per ASTM A242 or AWWA C111
- Flange: Class D AWWA C207
- Gasket: SBR rubber per ASTM D2000
- Finish: Black shop coat - NSF 61 approved

The Ford Meter Box Company considers the information in this submittal form to be correct at the time of publication. Item and option availability, including specifications, are subject to change without notice. Please verify that your product information is current. Our standard warranty applies.



**The Ford Meter Box Company, Inc.**  
P.O. Box 443, Wabash, Indiana U.S.A. 46992-0443  
Phone: 260-563-3171 / Fax: 800-826-3487  
Overseas Fax: 260-563-0167  
www.fordmeterbox.com

11/22/19

Submitted By: