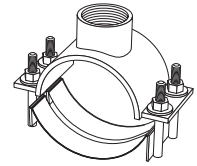


SUBMITTAL INFORMATION

Fabricated Steel Saddle - (FCD202-xxxx-TAP-Q style)



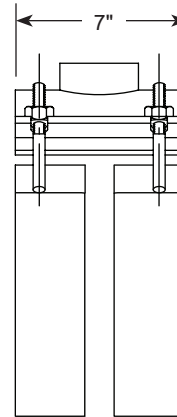
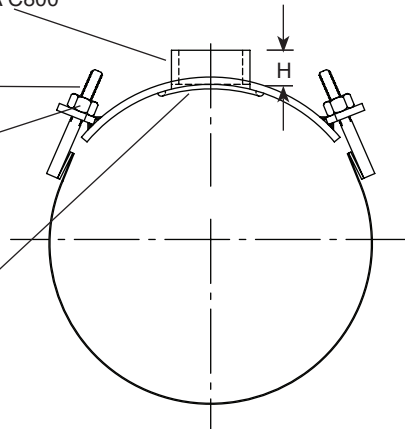
36"-60" FABRICATED STEEL SADDLE WITH 316 STAINLESS STEEL BANDS AND HARDWARE

Threads - CC or IP per AWWA C800

5/8" Studs Type 316
Stainless Steel

Coated Type 316
Stainless Steel Nuts per
A193 and A194

Gasket - NBR (Buna-N)
Rubber per ASTM D2000



Body - Fabricated Steel
Finish - Epoxy Coating

Bands - Type 316 Stainless
Steel

NOM. PIPE SIZE	ACTUAL PIPE O.D. (IN.)	BOSS HEIGHT H	APPROX. WT. LBS.	CATALOG NUMBER	✓ SUBMITTED ITEM(S)
36"	38.30	1-1/2"	35.0	FCD202-3830-TAP-Q	
42"	44.50	1-1/2"	37.0	FCD202-4450-TAP-Q	
	44.72	1-1/2"	37.0	FCD202-4472-TAP-Q	
48"	50.80	1-1/2"	39.0	FCD202-5080-TAP-Q	
54"	57.56	1-1/2"	42.0	FCD202-5756-TAP-Q	
60"	61.60	1-1/2"	45.0	FCD202-6160-TAP-Q	

OUTLET TAP CODE

CC (AWWA) THREAD		
THREAD	CODE NUMBER	✓ SUBMITTED ITEM(S)
3/4" CC	CC3	
1" CC	CC4	
1-1/4" CC	CC5	
1-1/2" CC	CC6	
2" CC	CC7	

IP THREAD		
THREAD	CODE NUMBER	✓ SUBMITTED ITEM(S)
3/4" IP	IP3	
1" IP	IP4	
1-1/4" IP	IP5	
1-1/2" IP	IP6	
2" IP	IP7	
2-1/2" IP	IP8	
3" IP	IP9	
4" IP	IP11	

FEATURES

- Body made from carbon steel per ASTM A36
- Each dual band and 5/8" UNC threaded studs are type 316 stainless steel.
- Finish on saddle body is fusion-bonded epoxy coating - NSF 61 approved
- Conforms to AWWA C800

The Ford Meter Box Company considers the information in this submittal form to be correct at the time of publication. Item and option availability, including specifications, are subject to change without notice. Please verify that your product information is current. Our standard warranty applies.



The Ford Meter Box Company, Inc.
P.O. Box 443, Wabash, Indiana U.S.A. 46992-0443
Phone: 260-563-3171 / Fax: 800-826-3487
Overseas Fax: 260-563-0167
www.fordmeterbox.com

10/10/22

Submitted By: