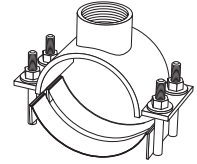


SUBMITTAL INFORMATION

Fabricated Steel Saddle - (FCD202-xxxx-TAP-U100 style)



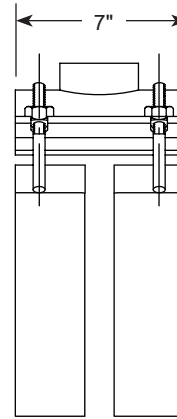
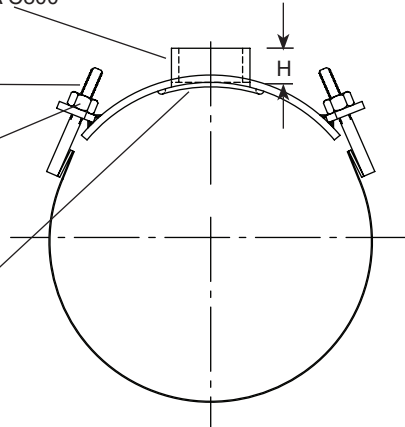
FABRICATED STEEL SADDLE WITH STAINLESS STEEL BANDS

Threads - CC or IP per AWWA C800

5/8" Studs Type 304
Stainless Steel per ASTM
A193 and A194

Coated Stainless Steel
Nuts per A193 and A194

Gasket - NBR (Buna-N)
Rubber per ASTM D2000



Body - Fabricated Steel
Finish - Epoxy Coating

Bands - Type 304 Stainless
Steel

NOM. PIPE SIZE (IN.)	ACTUAL PIPE O.D. (IN.)	BOSS HEIGHT H (IN.)	APPROX. WT. LBS.	CATALOG NUMBER	✓ SUBMITTED ITEM(S)
36	38.30	1-1/2	35.0	FCD202-3830-TAP-U100	
42	42.00	1-1/2	36.0	FCD202-4200-TAP-U100	
	44.50	1-1/2	37.0	FCD202-4450-TAP-U100	
	44.72	1-1/2	37.0	FCD202-4472-TAP-U100	
48	50.80	1-1/2	39.0	FCD202-5080-TAP-U100	
54	57.56	1-1/2	42.0	FCD202-5756-TAP-U100	
60	61.60	1-1/2	45.0	FCD202-6160-TAP-U100	

OUTLET TAP CODE

CC (AWWA) THREAD		
THREAD	CODE NUMBER	✓ SUBMITTED ITEM(S)
3/4" CC	CC3	
1" CC	CC4	
1-1/4" CC	CC5	
1-1/2" CC	CC6	
2" CC	CC7	

IP THREAD		
THREAD	CODE NUMBER	✓ SUBMITTED ITEM(S)
3/4" IP	IP3	
1" IP	IP4	
1-1/4" IP	IP5	
1-1/2" IP	IP6	
2" IP	IP7	
2-1/2" IP	IP8	
3" IP	IP9	
4" IP	IP11	

FEATURES

- Body made from carbon steel per ASTM A36
- Each dual band and 5/8" UNC threaded studs are type 304 stainless steel.
- Finish on saddle body is fusion-bonded epoxy coating - NSF 61 certified
- Conforms to AWWA C800
- 100% manufactured in the United States of America

The Ford Meter Box Company considers the information in this submittal form to be correct at the time of publication. Item and option availability, including specifications, are subject to change without notice. Please verify that your product information is current. Our standard warranty applies.



The Ford Meter Box Company, Inc.
P.O. Box 443, Wabash, Indiana U.S.A. 46992-0443
Phone: 260-563-3171 / Fax: 800-826-3487
Overseas Fax: 260-563-0167
www.fordmeterbox.com

07/16/24

Submitted By: