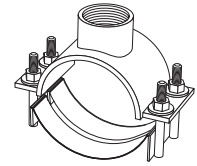
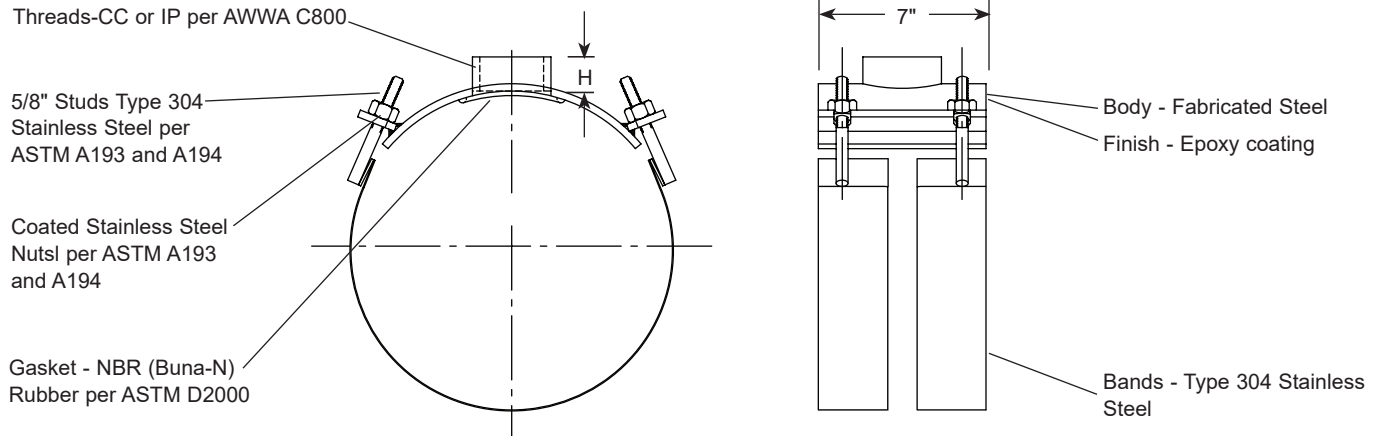


# SUBMITTAL INFORMATION

## Fabricated Steel Saddle - (FCD202-xxxx-TAP style)



### 36"-60" FABRICATED STEEL SADDLE WITH STAINLESS STEEL BANDS



NOM. PIPE SIZE	ACTUAL PIPE O.D. (IN.)	BOSS HEIGHT H	APPROX. WT. LBS.	CATALOG NUMBER	✓ SUBMITTED ITEM(S)
36"	38.30	1-1/2"	35.0	FCD202-3830-TAP	
42"	44.50	1-1/2"	37.0	FCD202-4450-TAP	
48"	50.80	1-1/2"	39.0	FCD202-5080-TAP	
54"	54.00	1-1/2"	41.0	FCD202-5400-TAP	
	57.56	1-1/2"	42.0	FCD202-5756-TAP	
60"	61.60	1-1/2"	45.0	FCD202-6160-TAP	

## OUTLET TAP CODE

CC (AWWA) THREAD		
THREAD	CODE NUMBER	✓ SUBMITTED ITEM(S)
3/4" CC	CC3	
1" CC	CC4	
1-1/4" CC	CC5	
1-1/2" CC	CC6	
2" CC	CC7	

IP THREAD		
THREAD	CODE NUMBER	✓ SUBMITTED ITEM(S)
3/4" IP	IP3	
1" IP	IP4	
1-1/4" IP	IP5	
1-1/2" IP	IP6	
2" IP	IP7	
2-1/2" IP	IP8	
3" IP	IP9	
4" IP	IP11	

## FEATURES

- Body made from carbon steel per ASTM A36
- Each dual band and 5/8" UNC threaded studs are type 304 stainless steel.
- Finish on saddle body is fusion-bonded epoxy coating - NSF 61 approved
- Conforms to AWWA C800

The Ford Meter Box Company considers the information in this submittal form to be correct at the time of publication. Item and option availability, including specifications, are subject to change without notice. Please verify that your product information is current. Our standard warranty applies.



### The Ford Meter Box Company, Inc.

P.O. Box 443, Wabash, Indiana U.S.A. 46992-0443

Phone: 260-563-3171 / Fax: 800-826-3487

Overseas Fax: 260-563-0167

www.fordmeterbox.com

10/05/22

Submitted By: