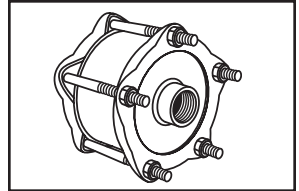
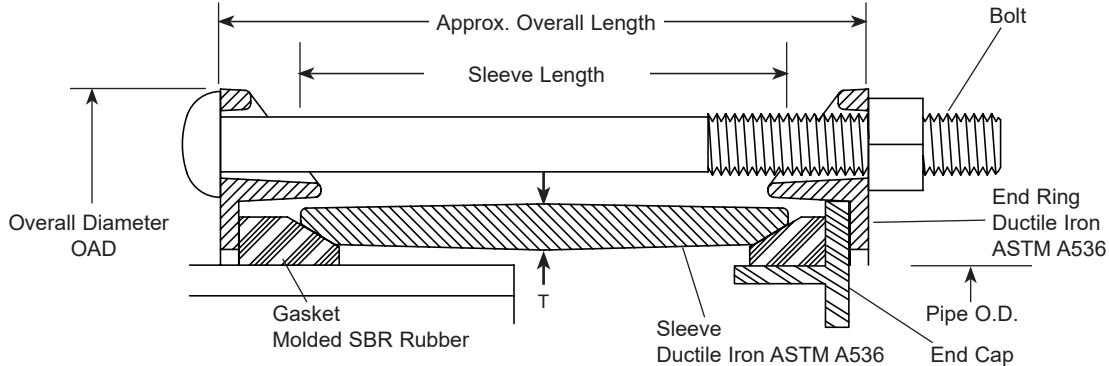


SUBMITTAL INFORMATION

Ductile Iron Couplings - (FEC-xxx style)



STYLE END CAP COUPLINGS FOR CAST, DUCTILE IRON OR PVC PIPE



NOM. PIPE SIZE	PIPE O.D. RANGE (IN.)	CATALOG NUMBER	APPROX. OAD (IN.)	SLEEVE LENGTH	APPROX. OAL	END CAP ONLY (INCLUDES GASKET)		MIN. NO. BOLTS	APPROX. WT. LBS.	✓SUBMITTED ITEM(S)
						FC1 COUPLING	FC2A COUPLING			
4"	4.00	FEC-400	9.45	5"	6-1/8"	FEC1-4	FEC2-4	3	21	
	4.50	FEC-450								
	4.80-5.14	FEC-514								
	5.15-5.57	FEC-557								
6"	6.00	FEC-600	11.11	5"	6-1/8"	FEC1-6	FEC2-6	4	31	
	6.63	FEC-663								
	6.90-7.20	FEC-720	11.50							
	7.21-7.56	FEC-756								
8"	8.00	FEC-800	13.38	5"	6-1/8"	FEC1-8	FEC2-8	5	41	
	8.63	FEC-863								
	9.05-9.40	FEC-940								
	9.40-9.74	FEC-974								
10"	11.10-11.40	FEC-1140	15.65	6"	7-1/8"	FEC1-10	FEC2-10	6	55	
	11.77-12.12	FEC-1212								
12"	13.20-13.50	FEC-1350	17.75	6"	7-1/8"	FEC1-12	FEC2-12	7	66	

FEATURES

- Sleeve - Ductile iron per ASTM A536, 65-45-12.
- End Rings - Ductile iron per ASTM A536, 65-45-12.
- Gaskets - NBR (Buna-N) per ASTM D2000
- End Cap - Steel with 2" female iron pipe threaded boss
- Bolts - High strength low alloy per ASTM A242 and AWWA C111
- Finish - Shop coat. Optional epoxy coating is available upon request.

The Ford Meter Box Company considers the information in this submittal form to be correct at the time of publication. Item and option availability, including specifications, are subject to change without notice. Please verify that your product information is current. Our standard warranty applies.



The Ford Meter Box Company, Inc.

P.O. Box 443, Wabash, Indiana U.S.A. 46992-0443
 Phone: 260-563-3171 / Fax: 800-826-3487
 Overseas Fax: 260-563-0167
 www.fordmeterbox.com

04/10/23

Submitted By: