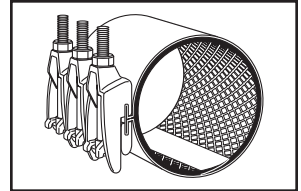


SUBMITTAL INFORMATION

Repair Clamps - (FP1-xxx-Length style)



STAINLESS STEEL REPAIR CLAMPS WITH DUCTILE IRON LUGS FOR HDPE PIPE

Optional Stainless Taps

ASTM A240 type 304 stainless steel TIG welded to band. Available with AWWA or I.P. threads.

Band

ASTM A240 type 304 stainless steel

Lugs

Ductile Iron per ASTM A536
Finish: E-coat epoxy

Washers

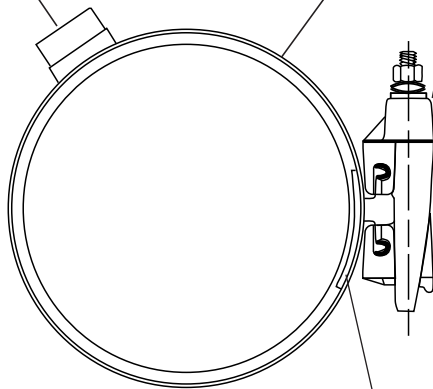
Belleville Spring Washer
17-7 PH Stainless Steel.
Note: Quantity may vary

Nuts and Bolts

High strength, low alloy steel per ASTM A242 and AWWA C111/A21.11. Nuts are fluorocarbon coated.

Optional

304 Stainless Steel Bolts and Nuts

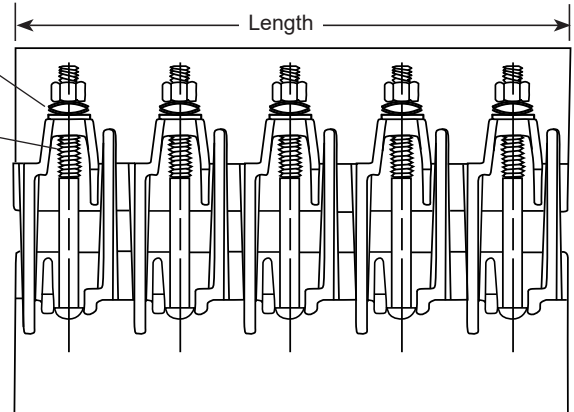


Gasket

Gridded Virgin SBR compounded for water service, per ASTM D2000. NBR (Buna-N) and EPDM are available as optional materials.

Armor

Heavy gauge stainless steel, mold bonded into the gasket to ensure uniform compression against the pipe



OUTLET THREAD TAP CODE

CC (AWWA) THREAD		IP THREAD	
THREAD	CODE NUMBER	THREAD	CODE No.
3/4" CC	-CC3	3/4" IP	-IP3
1" CC	-CC4	1" IP	-IP4
1-1/4" CC	-CC5	1-1/4" IP	-IP5
1-1/2" CC	-CC6	1-1/2" IP	-IP6
2" CC	-CC7	2" IP	-IP7

NOM. PIPE SIZE	PIPE O.D. RANGE (IN.)	LENGTH AND APPROXIMATE WEIGHT (LBS.)						BOLT SIZE	BAND THICKNESS	CATALOG NUMBER	✓ SUBMITTED ITEM(S)
		7.5"	10"	12.5"	15"	20"	30"				
3"	3.50	11	15	18	22	29	44	5/8" x 6-1/2"	24 GA.	FP1-350-Length	
4"	4.50	11	15	18	22	29	44			FP1-450-Length	
	4.80									FP1-480-Length	
6"	6.63	12	16	20	24	32	48		20 GA.	FP1-663-Length	
	6.90									FP1-690-Length	
8"	8.63	14	19	23	28	37	55			FP1-863-Length	
	9.05									FP1-905-Length	
10"	10.75	16	21	26	31	41	62			FP1-1075-Length	
	11.10									FP1-1110-Length	
12"	12.75	17	22	28	33	44	67			FP1-1275-Length	
	13.20								FP1-1320-Length		
Number of Bolts		3	4	5	6	8	12				

FEATURES

- Belleville spring washers allow for limited pipe expansion and contraction
- Drop-in bolt design allows bolts to remain attached - no loose parts to lose in the ditch
- Also available in two- and three- section clamps for a wider range of pipe sizes and tolerances
- Optional outlet taps are available for repair of service line pull-outs. Add tapping code to catalog number
- All welds are fully passivated to restore corrosion resistant characteristics of stainless steel
- Removable lugs
- Certified to ANSI/NSF Standard 61

The Ford Meter Box Company considers the information in this submittal form to be correct at the time of publication. Item and option availability, including specifications, are subject to change without notice. Please verify that your product information is current. Our standard warranty applies.



The Ford Meter Box Company, Inc.

P.O. Box 443, Wabash, Indiana U.S.A. 46992-0443

Phone: 260-563-3171 / Fax: 800-826-3487

Overseas Fax: 260-563-0167

www.fordmeterbox.com

04/25/24

Submitted By: