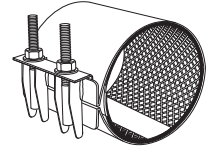


SUBMITTAL INFORMATION

Repair Clamps - (FS1-xxxx-Length-Q style)



10" AND 12" ALL 316 STAINLESS STEEL CIRCLE REPAIR CLAMPS

Optional Stainless Taps
ASTM A240 type 316 stainless steel tig welded to band. Available with AWWA or I.P. threads.

Band
Type 316 stainless steel

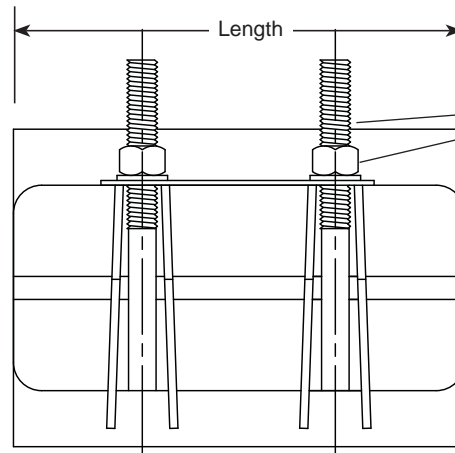
Lifter Bar
Type 316 heavy gauge stainless steel

Sidebar
Type 316 heavy gauge stainless steel

Lug
Type 316 heavy gauge stainless steel

Gasket
Gridded virgin SBR compounded for water service, per ASTM D2000. Buna-N Nitrile is optional.

Armor
Heavy gauge stainless steel, mold bonded into the gasket to ensure uniform compression against the pipe



Bolts & Nuts
Type 316 stainless steel nuts and washers. Nuts are coated to prevent galling.

OUTLET THREAD TAP CODE

| CC (AWWA) THREAD | | IP THREAD | |
|------------------|-------------|-----------|----------|
| THREAD | CODE NUMBER | THREAD | CODE No. |
| 3/4" CC | -CC3 | 3/4" IP | -IP3 |
| 1" CC | -CC4 | 1" IP | -IP4 |
| 1-1/4" CC | -CC5 | 1-1/4" IP | -IP5 |
| 1-1/2" CC | -CC6 | 1-1/2" IP | -IP6 |
| 2" CC | -CC7 | 2" IP | -IP7 |

| NOM. PIPE SIZE | PIPE O.D. | LENGTH AND APPROXIMATE WEIGHT (LBS.) | | | | | | | BOLT SIZE | BAND THICKNESS | CATALOG NUMBER FS1-XXXX-LENGTH-Q | ✓ SUBMITTED ITEM(S) |
|-------------------|---------------|--------------------------------------|-----|-------|-----|-----|-----|-----|----------------|-------------------|-------------------------------------|------------------------|
| | RANGE | 7.5" | 10" | 12.5" | 15" | 20" | 24" | 30" | | | | |
| 10" | 9.70 - 10.10 | 11 | 14 | 16 | 24 | 28 | 32 | 42 | 5/8" 11 UNC | 20 GA. | FS1-1010-xx-Q | |
| | 10.64 - 11.04 | | | | | | | | | | FS1-1104-xx-Q | |
| | 11.04 - 11.44 | | | | | | | | | | FS1-1144-xx-Q | |
| | 11.34 - 11.74 | | | | | | | | | | FS1-1174-xx-Q | |
| | 11.75 - 12.15 | | | | | | | | | | FS1-1215-xx-Q | |
| 12" | 12.00 - 12.40 | 13 | 16 | 18 | 27 | 30 | 36 | 48 | | | FS1-1240-xx-Q | |
| | 12.62 - 13.02 | | | | | | | | | | FS1-1302-xx-Q | |
| | 13.10 - 13.50 | | | | | | | | | | FS1-1350-xx-Q | |
| | 13.40 - 13.80 | | | | | | | | | | FS1-1380-xx-Q | |
| | 13.70 - 14.10 | | | | | | | | | | FS1-1410-xx-Q | |
| | 14.00 - 14.40 | | | | | | | | | | FS1-1440-xx-Q | |
| | | | | | | | | | | | | |
| Number of Bolts | | 2 | 3 | 4 | 4 | 6 | 7 | 9 | | | | |

FEATURES

- Buna-N gasket and conductivity strips are available
- Also available in two-and three- section clamps for a wider range of pipe sizes and tolerances
- Optional outlet taps are available for repair of service line pull-outs. Add tapping code to catalog number
- All welds are fully passivated to restore corrosion resistant characteristics of stainless steel
- UL Classified to ANSI/NSF Standard 61

The Ford Meter Box Company considers the information in this submittal form to be correct at the time of publication. Item and option availability, including specifications, are subject to change without notice. Please verify that your product information is current.



The Ford Meter Box Company, Inc.
P.O. Box 443, Wabash, Indiana U.S.A. 46992-0443
Phone: 260-563-3171 / Fax: 800-826-3487
Overseas Fax: 260-563-0167
www.fordmeterbox.com

07/22/15

Submitted By: