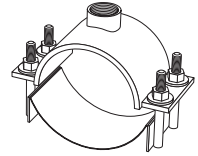
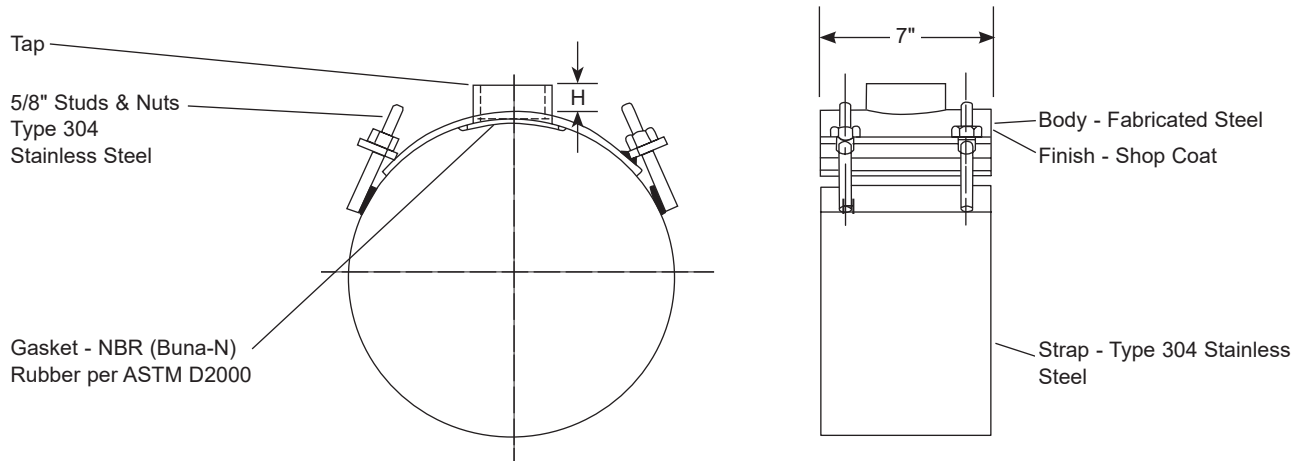


# SUBMITTAL INFORMATION

## Fabricated Steel Saddle - (FS202-xxxx-TAP-U100 style)



### 36" THROUGH 54" FABRICATED STEEL SADDLE WITH STAINLESS STEEL BAND



NOM. PIPE SIZE	ACTUAL PIPE O.D. (IN.)	BOSS HEIGHT H	APPROX. WT. LBS.	CATALOG NUMBER	✓ SUBMITTED ITEM(S)
36"	38.30	1-1/2"	35.0	FS202-3830-TAP-U100	
42"	42.00	1-1/2"	36.0	FS202-4200-TAP-U100	
42"	44.50	1-1/2"	37.0	FS202-4450-TAP-U100	
48"	50.80	1-1/2"	39.0	FS202-5080-TAP-U100	
54"	57.56	1-1/2"	42.0	FS202-5756-TAP-U100	

### OUTLET THREAD TAP CODE

CC (AWWA) THREAD			IP THREAD		
THREAD	CODE NO.	✓ SUBMITTED ITEM(S)	THREAD	CODE NO.	✓ SUBMITTED ITEM(S)
3/4" CC	CC3		3/4" IP	IP3	
1" CC	CC4		1" IP	IP4	
1-1/4" CC	CC5		1-1/4" IP	IP5	
1-1/2" CC	CC6		1-1/2" IP	IP6	
2" CC	CC7		2" IP	IP7	
			2-1/2" IP	IP8	
			3" IP	IP9	
			4" IP	IP11	

### FEATURES

- 150 psi working pressure, dependent upon industry standard support and backfill practices
- 100% manufactured in the United States of America

The Ford Meter Box Company considers the information in this submittal form to be correct at the time of publication. Item and option availability, including specifications, are subject to change without notice. Please verify that your product information is current. Our standard warranty applies.



#### The Ford Meter Box Company, Inc.

P.O. Box 443, Wabash, Indiana U.S.A. 46992-0443

Phone: 260-563-3171 / Fax: 800-826-3487

Overseas Fax: 260-563-0167

www.fordmeterbox.com

04/03/23

Submitted By: