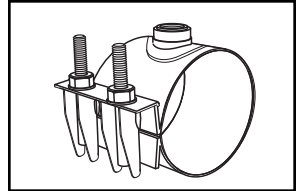
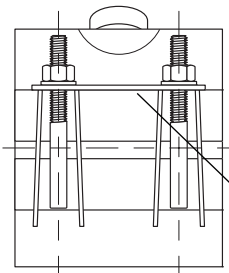


# SUBMITTAL INFORMATION

## Stainless Steel Saddle - Single Band - (FS313-xxx-TAP style)



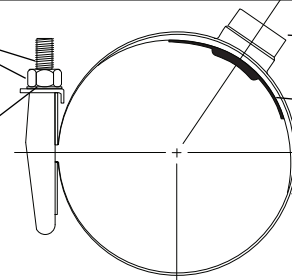
### TAPPED STAINLESS STEEL SADDLE



Stainless Steel Nuts and Studs - Type 304 stainless steel studs per ASTM A193 and A194. Heavy hex nuts are coated to prevent galling.

Washers - Type 304 stainless steel per ASTM A193 and A194

Lifter Bars - Type 304 stainless steel



Stainless Taps - Type 304 stainless steel TIG welded to shell. Available with AWWA, FIP or BSP threads 1/2" thru 2".

Gasket - NBR (Buna-N) rubber per ASTM D2000. Optional EPDM available.

Stainless Band - Type 304 stainless steel. Saddles are fully passivated to restore stainless steel characteristics.

NOM. PIPE SIZE	SADDLE O.D. RANGE (IN.)	TAP SIZE 1/2" - 1"				TAP SIZE 1-1/4" - 2"				CATALOG NUMBER								
		BAND WIDTH	NO. OF BOLTS	BOLT SIZE	APPROX. WT. LBS.	BAND WIDTH	NO. OF BOLTS	BOLT SIZE	APPROX. WT. LBS.									
2"	2.13	4"	1	1/2"	1.7	N/A	N/A	N/A	N/A	◆ FS313-213-TAP								
	2.38									◆ FS313-238-TAP								
	2.50-2.70									◆ FS313-270-TAP								
2-1/2"	2.88	4"	1	1/2"	1.7	N/A	N/A	N/A	N/A	◆ FS313-288-TAP								
	3.46-3.70									◆* FS313-370-TAP								
3"	3.50	4"	1	1/2"	2	7-1/2"	2	1/2"	3.8	◆**FS313-350-TAP								
	3.90-4.10									◆* FS313-410-TAP								
	4.50-4.80									FS313-480-TAP								
4"	4.80-5.20	6"	2	1/2"	2.4	7-1/2"	2	1/2"	4.2	FS313-520-TAP								
	5.56									6"	2	5/8"	2.7	7-1/2"	2	5/8"	4.8	FS313-556-TAP
	6.00-6.40																	FS313-640-TAP
6.41-6.80	FS313-680-TAP																	
6"	6.63-6.90	6"	2	5/8"	2.9	7-1/2"	2	5/8"	5.1	FS313-690-TAP								
	6.80-7.20									FS313-720-TAP								
	7.45-7.85									FS313-785-TAP								
	8.00-8.40									FS313-840-TAP								
	8.40-8.80									FS313-880-TAP								
8"	8.63-9.05	6"	2	5/8"	3.3	7-1/2"	2	5/8"	5.6	FS313-905-TAP								
	9.00-9.40									FS313-940-TAP								
	10.00-10.40									FS313-1040-TAP								
	10.40-10.80									FS313-1080-TAP								
10"	10.75-11.10	6"	2	5/8"	6.2	7-1/2"	2	5/8"	6.6	FS313-1110-TAP								
	11.10-11.50									FS313-1150-TAP								
	12.00-12.40									FS313-1240-TAP								
	12.40-12.80									FS313-1280-TAP								
12"	12.75-13.20	6"	2	5/8"	6.8	7-1/2"	2	5/8"	7.1	FS313-1320-TAP								
	13.10-13.50									FS313-1350-TAP								

\* CC7 tap not available for this size.

\*\* CC6, CC7 and IP7 not available for this size.

◆ One-bolt design

### OUTLET TAP CODE

CC (AWWA) THREAD			IP THREAD		
THREAD	Code No.	✓ SUBMITTED ITEM(S)	THREAD	Code No.	✓ SUBMITTED ITEM(S)
1/2" CC	CC1		1/2" IP	IP1	
3/4" CC	CC3		3/4" IP	IP3	
1" CC	CC4		1" IP	IP4	
1-1/4" CC	CC5		1-1/4" IP	IP5	
1-1/2" CC	CC6		1-1/2" IP	IP6	
2" CC	CC7		2" IP	IP7	

**To Order:** Select the catalog number for the desired pipe range and complete the catalog number by adding the outlet thread tap code.

Example: A single band saddle for 9.05 O.D. pipe with a 3/4" CC thread would be FS313-940-CC3.

### FEATURES

- All components are made of type 304 stainless steel
- Approved for use on HDPE. If Belleville washers are required, use the prefix FSP313
- Fully passivated for corrosion resistance
- Saddles 6" and larger have coined body for gasket retention. 4" saddles with a 1" or larger tap are coined.
- NBR (Buna-N) rubber pad gasket per ASTM D2000 with raised compression seal
- Rated for 250 psi working pressure
- Certified to ANSI/NSF Standard 61

The Ford Meter Box Company considers the information in this submittal form to be correct at the time of publication. Item and option availability, including specifications, are subject to change without notice. Please verify that your product information is current. Our standard warranty applies.



**The Ford Meter Box Company, Inc.**

P.O. Box 443, Wabash, Indiana U.S.A. 46992-0443

Phone: 260-563-3171 / Fax: 800-826-3487

Overseas Fax: 260-563-0167

www.fordmeterbox.com

11/22/19

Submitted by: