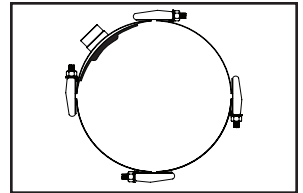
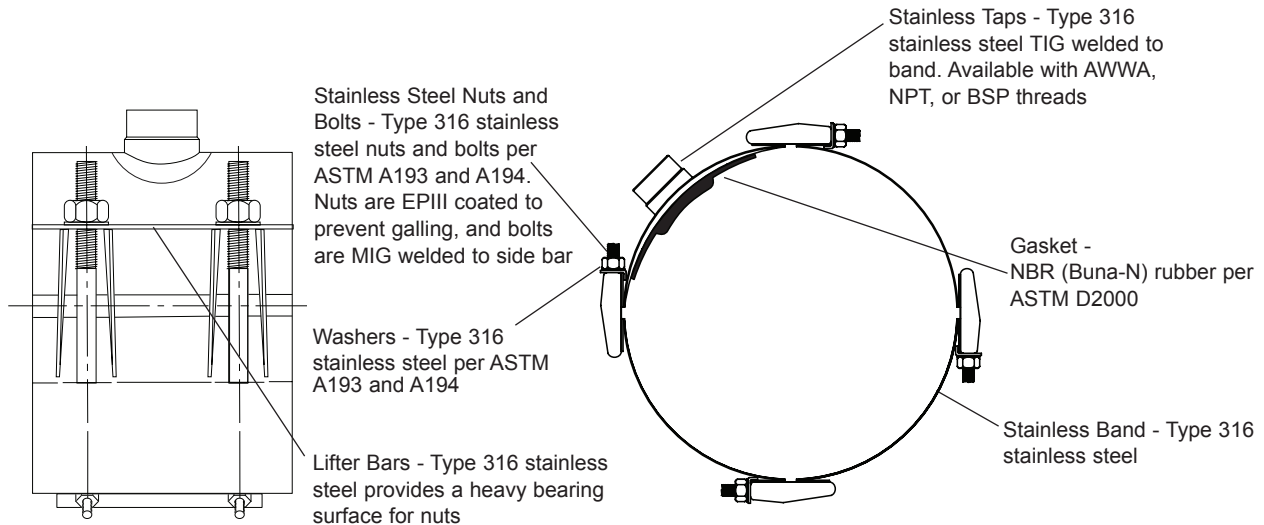


SUBMITTAL INFORMATION

Stainless Steel Saddle - Four Part Band - (FS343-3870-TAP-Q style)



TAPPED STAINLESS STEEL SADDLE



NOM. PIPE SIZE	SADDLE O.D. RANGE (IN.)	TAP SIZE 1/2" - 1"			TAP SIZE 1-1/4", 1-1/2" & 2"			CATALOG NUMBER	✓ SUBMITTED ITEM(S)
		BAND WIDTH	BOLT SIZE	APPROX. WT. LBS.	BAND WIDTH	BOLT SIZE	APPROX. WT. LBS.		
36"	37.50-38.70	6"	5/8"	22.5	7-1/2"	5/8"	24.5	FS343-3870-TAP-Q	

OUTLET TAP CODE

CC (AWWA) THREAD		
THREAD	CODE NO.	✓ SUBMITTED ITEM(S)
1/2" CC	CC1	
3/4" CC	CC3	
1" CC	CC4	
1-1/4" CC	CC5	
1-1/2" CC	CC6	
2" CC	CC7	

IP THREAD		
THREAD	CODE NO.	✓ SUBMITTED ITEM(S)
1/2" IP	IP1	
3/4" IP	IP3	
1" IP	IP4	
1-1/4" IP	IP5	
1-1/2" IP	IP6	
2" IP	IP7	

FEATURES

- Body, bands and threaded studs are made of type 316 stainless steel
- All welds are fully passivated for corrosion resistance
- Coined body for gasket retention
- NBR (Buna-N) rubber pad gasket per ASTM D2000 with raised compression seal
- Rated for working pressure equal to the lesser of pipe pressure rating or 150 psi
- Certified to ANSI/NSF Standard 61

The Ford Meter Box Company considers the information in this submittal form to be correct at the time of publication. Item and option availability, including specifications, are subject to change without notice. Please verify that your product information is current. Our standard warranty applies.



The Ford Meter Box Company, Inc.
P.O. Box 443, Wabash, Indiana U.S.A. 46992-0443
Phone: 260-563-3171 / Fax: 800-826-3487
Overseas Fax: 260-563-0167
www.fordmeterbox.com

09/13/21

Submitted By: