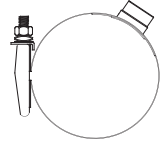
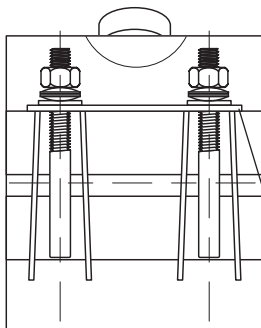


SUBMITTAL INFORMATION

Stainless Steel Saddle - Single Band - (FSP313-xxx-TAP-Q style)



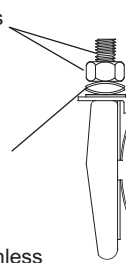
TAPPED STAINLESS STEEL SADDLE FOR HDPE PIPE



Stainless Steel Nuts and Studs - Type 316 stainless steel per ASTM A193 and A194. Heavy hex nuts are coated to prevent galling.

Washers - Belleville spring washer 17-7 PH stainless steel.

Lifter Bars - Type 316 stainless steel.



Stainless Taps - Type 316 stainless steel TIG welded to shell. Available with AWWA, FIP 1/2" thru 2".

Gasket - NBR (Buna-N) rubber per ASTM D2000.

Stainless Band - Type 316 stainless steel. Saddles are fully passivated to restore stainless steel characteristics.

Nom. Pipe Size (In.)	Saddle O.D. Range (In.)	Tap Size 1/2" - 1"				Tap Size 1-1/4 - 2"				Catalog Number	✓ Submitted Item(s)
		Band Width (In.)	No. Of Bol ts	Bol t Size (In.)	Approx. Wt. Lbs.	Band Width (In.)	No. Of Bol ts	Bol t Size (In.)	Approx. Wt. Lbs.		
2	2.38	6	2	1/2	1.7	N/A	N/A	N/A	N/A	FSP313-238-TAP-Q	
3	3.50	6	2	1/2	2.0	7-1/2	2	1/2	4.0	*FSP313-350-TAP-Q	
3	3.96	6	2	1/2	2.2	7-1/2	2	1/2	4.1	*FSP313-396-TAP-Q	
4	4.50	6	2	1/2	2.4	7-1/2	2	1/2	4.2	FSP313-450-TAP-Q	
	4.80									FSP313-480-TAP-Q	
6	6.63	6	2	5/8	2.9	7-1/2	2	5/8	5.1	FSP313-663-TAP-Q	
	6.90									FSP313-690-TAP-Q	
8	8.63	6	2	5/8	3.3	7-1/2	2	5/8	5.6	FSP313-863-TAP-Q	
	9.05									FSP313-905-TAP-Q	
10	10.75	6	2	5/8	6.2	7-1/2	2	5/8	6.6	FSP313-1075-TAP-Q	
	11.10									FSP313-1110-TAP-Q	
12	12.75	6	2	5/8	6.8	7-1/2	2	5/8	7.1	FSP313-1275-TAP-Q	
	13.20									FSP313-1320-TAP-Q	

Note: Coined outlet not available on 2" and 3" saddles.

* CC7 not available for this size

** CC6, CC7 and IP7 not available for this size

Outlet Tap Code

CC (AWWA) Thread			IP Thread		
Thread	Code No.	3 Submitted Item(s)	Thread	Code No.	3 Submitted Item(s)
1/2" CC	CC1		1/2" IP	IP1	
3/4" CC	CC3		3/4" IP	IP3	
1" CC	CC4		1" IP	IP4	
1-1/4" CC	CC5		1-1/4" IP	IP5	
1-1/2" CC	CC6		1-1/2" IP	IP6	
2" CC	CC7		2" IP	IP7	

To Order: Select the catalog number for the desired pipe range and complete the catalog number by adding the outlet thread tap code.

Example: A single band repair saddle for 9.05 O.D. pipe with a 3/4" CC thread would be FSP313-905-CC3-Q.

FEATURES

- All components are made of type 316 stainless steel
- All welds are fully passivated for corrosion resistance
- Belleville spring washers allow for limited pipe expansion and contraction
- Saddles 4" and larger have coined body for gasket retention
- NBR (Buna-N) rubber pad gasket per ASTM D2000 with raised compression seal
- Rated for working pressure equal to the lesser of pipe pressure rating or 250 psi
- Certified to ANSI/NSF 61

The Ford Meter Box Company considers the information in this submittal form to be correct at the time of publication. Item and option availability, including specifications, are subject to change without notice. Please verify that your product information is current. Our standard warranty applies.



The Ford Meter Box Company, Inc.
P.O. Box 443, Wabash, Indiana U.S.A. 46992-0443
Phone: 260-563-3171 / Fax: 800-826-3487
Overseas Fax: 260-563-0167
www.fordmeterbox.com

06/11/24

Submitted By: