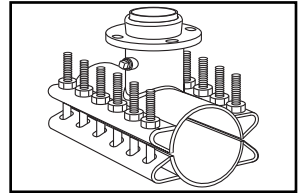


# SUBMITTAL INFORMATION

## Steel Tapping Sleeve - (FTS-690-x-MJ style)



### STEEL TAPPING SLEEVE - 6" WITH MECHANICAL JOINT OUTLET

MJ Adapter Outlet - Compatible with AWWA C111 Mechanical Joint fittings

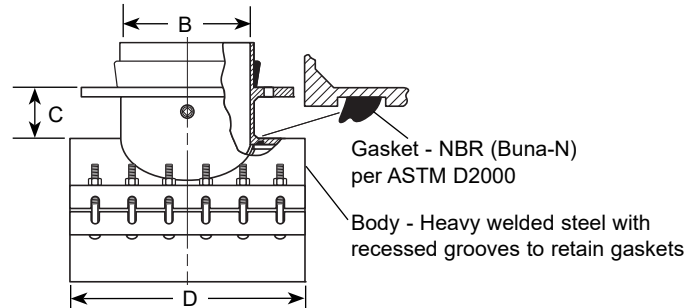
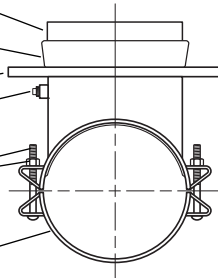
Connecting Gasket - NBR (Buna-N) per ASTM D2000

Support Ring - ASTM A36 Carbon Steel

3/4-14 Steel Test Plug

Bolts and Nuts - High strength, low alloy

Finish - Shop coat base for field coatings



NOM. PIPE SIZE	SLEEVE O.D. RANGE (IN.)	BY	OUTLET SIZE CODE	NOMINAL DIMENSIONS-INCHES			No. OF BOLTS	APPROX. WT. LBS.	SLEEVE NUMBER*	✓ SUBMITTED ITEM(S)
				B	C	D				
6"	6.60-6.90		3	3-1/16"	5-3/16"	12"	6	64	FTS-690-x-MJ	
			4	4-1/8"	5-3/16"	12"		65		
			6	6-1/4"	5-3/16"	12"		72		

\* To order: Add outlet size to the sleeve number. Example: A 4" outlet on 6" PVC (C900) would be FTS-690-4-MJ. For stainless steel nuts and bolts option, add "-SH" to the catalog number. Example: FTS-690-4-MJ-SH.

## FEATURES

- Heavy welded steel meeting ASTM A36 36,000 psi minimum yield
- Bolts and nuts are made of high strength, low alloy per ASTM A242 and AWWA C111
- Certified to NSF/ANSI Standard 61
- Rated to the lesser of 250 psi or the rating of the pipe

The Ford Meter Box Company considers the information in this submittal form to be correct at the time of publication. Item and option availability, including specifications, are subject to change without notice. Please verify that your product information is current. Our standard warranty applies.



**The Ford Meter Box Company, Inc.**

P.O. Box 443, Wabash, Indiana U.S.A. 46992-0443

Phone: 260-563-3171 / Fax: 800-826-3487

Overseas Fax: 260-563-0167

www.fordmeterbox.com

05/21/20

Submitted By: