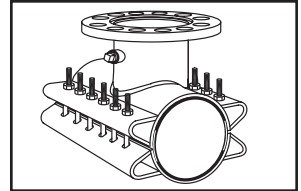


SUBMITTAL INFORMATION

Stainless Steel Tapping Sleeve 60" - (FTSAS-6185-x style)



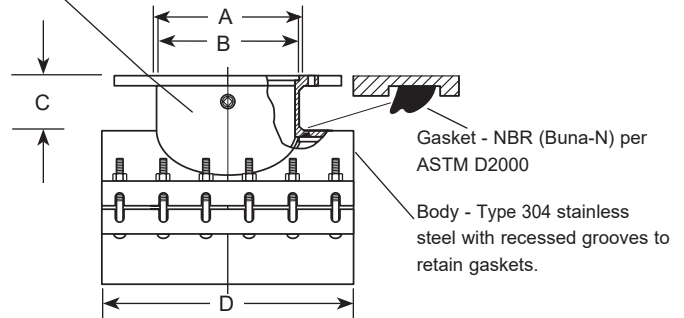
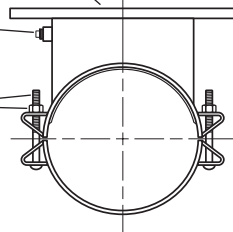
*TAPPING SLEEVE WITH STAINLESS STEEL OR CARBON STEEL FLANGE

Flange - Type 304 stainless steel with recess per MSS SP-60 to accept standard tapping valves. Flange conforms to AWWA C228 Class D ANSI 150# drilling. Optional carbon steel flange, per AWWA C207, is available.

Outlet Pipe - Type 304 stainless steel

3/4-14 No-Lead Brass Test Plug

Bolts, Nuts, & Washers - Type 304 stainless steel per ASTM A193 and A194. Heavy hex nuts and washers are coated to prevent galling and maximize bolt efficiency



NOM. PIPE SIZE	SLEEVE O.D. RANGE (IN.)	FLANGE SIZE CODE	NOMINAL DIMENSIONS - INCHES				No. OF BOLTS	SIZE OF BOLTS (IN.)	APPROX. WT. LBS.	*SLEEVE NUMBER	✓ SUBMITTED ITEM(S)
			COUNTER-BORE ID	OUTLET PIPE ID	TOP OF PIPE TO TOP OF FLANGE	WIDTH					
			A	B	C	D					
60"	61.15-61.85	2	3-1/16	3-1/4	5-1/16	16	10	3/4	255	FTSAS-6185-x	
		3	4-1/16	3-1/4	5-1/16	16	10	3/4	257		
		4	5-1/16	4-1/4	5-1/16	16	10	3/4	259		
		6	7-1/16	6-13/32	5-1/16	16	10	3/4	284		
		8	9-1/16	8-13/32	5-1/16	20	10	3/4	289		
		10	11-1/16	10-15/32	5-1/16	20	12	3/4	346		
		12	13-1/16	12-13/32	5-1/16	24	14	3/4	443		
		14	15-9/32	13-1/2	6-1/8	24	14	3/4	473		
		16	17-9/32	15-1/2	6-1/8	32	20	3/4	587		
		18	19-1/2	17-1/2	6-1/8	36	24	3/4	624		
		20	21-1/2	19-1/2	6-1/8	40	24	3/4	752		
		24	25-1/2	23-1/2	6-1/8	48	28	3/4	956		
		30	31-1/16	29-9/16	6-1/4	60	36	3/4	1207		
		36	37-1/16	35-9/16	6-1/4	60	36	3/4	1357		

* The complete FTSAS catalog number for a 60" pipe (61.60 O.D.) with a 16" stainless steel flange is FTSAS-6185-16. For carbon steel flange, add "A" to the catalog number. Example: FTSAS-6185-16A.

Note: A 1" undersize cutter is required for flanges 14" and larger. Oversize outlets are available by special request.

FEATURES

- Body, straps and UNC threaded bolts are made of type 304 stainless steel. Flange can be either type 304 stainless steel or ASTM A36 carbon steel. All welds are fully passivated for corrosion resistance.
- Outlet gasket is NBR (Buna-N) per ASTM D2000.
- Other sizes and ranges available. Contact your Ford Meter Box[®] representative for details.
- Removable bolts
- Rated for 250 psi up to 24" outlets. 30"-36" outlets rated for 200 psi. Ratings not to exceed the rating of the pipe.

The Ford Meter Box Company considers the information in this submittal form to be correct at the time of publication. Item and option availability, including specifications, are subject to change without notice. Please verify that your product information is current. Our standard warranty applies.



The Ford Meter Box Company, Inc.
P.O. Box 443, Wabash, Indiana U.S.A. 46992-0443
Phone: 260-563-3171 / Fax: 800-826-3487
Overseas Fax: 260-563-0167
www.fordmeterbox.com

05/23/22

Submitted By: