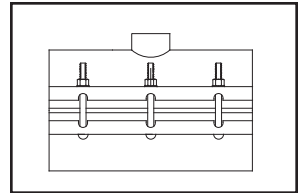


SUBMITTAL INFORMATION

Stainless Steel Tapping Sleeve - (FTSAS-xxxx-TAP style)



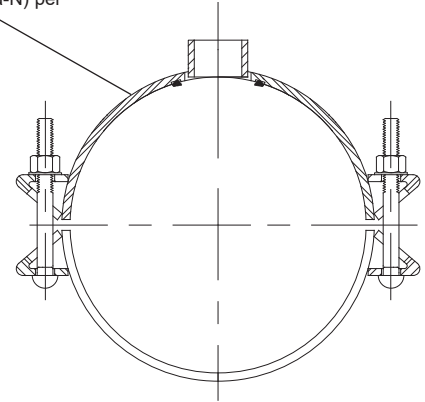
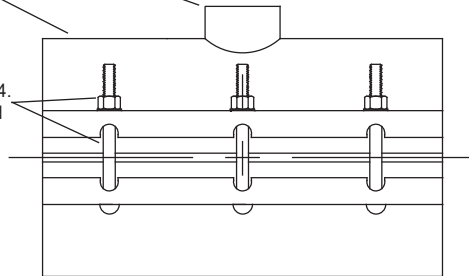
20"-24" STAINLESS STEEL TAPPING SLEEVE

Tap - Iron Pipe Thread

Body - Type 304 stainless steel with recessed grooves to retain gaskets.

Gasket - NBR (Buna-N) per ASTM D2000

Bolts, Nuts, & Washers - Type 304 stainless steel per ASTM A193 and A194. Heavy hex nuts and washers are coated to prevent galling and maximize bolt efficiency



NOM PIPE SIZE	SLEEVE OD RANGE (IN.)	BY	OUTLET SIZE	SLEEVE NUMBER*	✓ SUBMITTED ITEM(S)
20"	21.51-22.15 22.16-22.81 23.46-24.16 24.82-25.52		3/4"-IP3	FTSAS-2215-TAP FTSAS-2281-TAP FTSAS-2416-TAP FTSAS-2552-TAP	
			1"-IP4		
			1-1/2"-IP6		
			2"-IP7		
			3"-IP9		
			4"-IP11		
24"	25.71-26.41 26.55-27.25 27.26-27.96 28.14-28.84		3/4"-IP3	FTSAS-2641-TAP FTSAS-2725-TAP FTSAS-2796-TAP FTSAS-2884-TAP	
			1"-IP4		
			1-1/2"-IP6		
			2"-IP7		
			3"-IP9		
			4"-IP11		

* **To Order:** Add outlet size to sleeve number. Example: A 3" outlet on 24" ductile iron pipe would be an FTSAS-2641-IP9.

FEATURES

- Body, straps and UNC threaded bolts are made of type 304 stainless steel. All welds are fully passivated for corrosion resistance.
- Outlet gasket is NBR (Buna-N) per ASTM D2000.
- Other sizes and ranges available. Contact your Ford Meter Box® representative for details.
- Removable bolts provide better accessibility.
- Rated for up to 250 psi. Rating not to exceed the pressure rating of the pipe.

The Ford Meter Box Company considers the information in this submittal form to be correct at the time of publication. Item and option availability, including specifications, are subject to change without notice. Please verify that your product information is current. Our standard warranty applies.



The Ford Meter Box Company, Inc.

P.O. Box 443, Wabash, Indiana U.S.A. 46992-0443

Phone: 260-563-3171 / Fax: 800-826-3487

Overseas Fax: 260-563-0167

www.fordmeterbox.com

08/09/22

Submitted By: