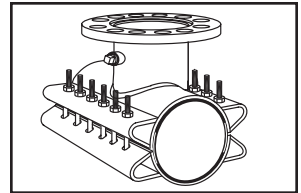


SUBMITTAL INFORMATION

Stainless Steel Tapping Sleeve - (FTSASP-xxxx-xx style)



TAPPING SLEEVE WITH STAINLESS STEEL OR CARBON STEEL FLANGE FOR HDPE PIPE

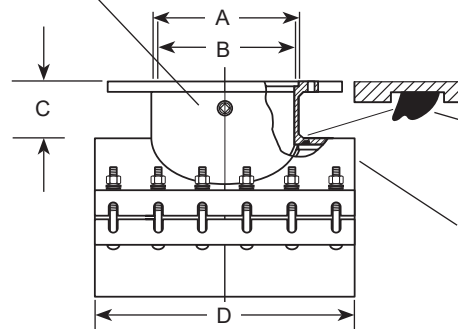
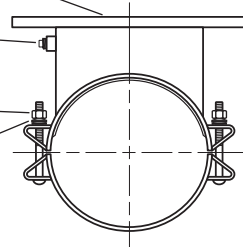
Flange - Type 304 stainless steel with recess per MSS SP-60 to accept standard tapping valves. Flange conforms to AWWA C228 Class D ANSI 150# drilling. Optional carbon steel flange, per AWWA C207, is available.

Outlet Pipe - Type 304 stainless steel

3/4-14 No-Lead Brass Test Plug

Bolts and Nuts - Type 304 stainless steel per ASTM A193 and A194. Heavy hex nuts are coated to prevent galling and maximize bolt efficiency

Washers - Belleville spring washer 17-7 PH stainless steel. Quantity may vary.



Gasket - NBR (Buna-N) per ASTM D2000.

Body - Type 304 stainless steel with recessed grooves to retain gaskets in outlets 14" and larger.

NOM PIPE SIZE	SLEEVE OD RANGE (IN.)	FLANGE SIZE CODE	NOMINAL DIMENSIONS - INCHES				NO. OF BOLTS	SIZE OF BOLTS (IN.)	APPROX WEIGHT LBS.	SLEEVE NUMBER	✓ SUBMITTED ITEM(S)
			COUNTER- BORE ID	OUTLET PIPE ID	TOP OF PIPE TO TOP OF FLANGE	WIDTH					
			A	B	C	D					
18"	18.00	2	3-1/16	3-1/4	5-1/16	16	10	3/4	229	FTSASP-1800-xx	
		3	4-1/16	3-1/4	5-1/16	16	10	3/4	230		
		4	5-1/16	4-1/4	5-1/16	16	10	3/4	231		
		6	7-1/16	6-13/32	5-1/16	16	10	3/4	234		
		8	9-1/16	8-13/32	5-1/16	20	12	3/4	239		
		10	11-1/16	10-15/32	5-1/16	20	12	3/4	260		
		12	13-1/16	12-13/32	5-1/16	24	14	3/4	290		
		14	15-9/32	13-1/2	6-1/8	24	14	3/4	302		
	19.50	16	17-9/32	15-1/2	6-1/8	32	20	3/4	358	FTSASP-1950-xx	
		2	3-1/16	3-1/4	5-1/16	16	10	3/4	229		
		3	4-1/16	3-1/4	5-1/16	16	10	3/4	230		
		4	5-1/16	4-1/4	5-1/16	16	10	3/4	231		
		6	7-1/16	6-13/32	5-1/16	16	10	3/4	234		
		8	9-1/16	8-13/32	5-1/16	20	12	3/4	239		
		10	11-1/16	10-15/32	5-1/16	20	12	3/4	260		
		12	13-1/16	12-13/32	5-1/16	24	14	3/4	290		
		14	15-9/32	13-1/2	6-1/8	24	14	3/4	302		
		16	17-9/32	15-1/2	6-1/8	32	20	3/4	358		

Note: The complete FTSASP catalog number for a 18" pipe (18.00 O.D.) with a 3" stainless steel flange is FTSASP-1800-3. For carbon steel flange, add "A" to the catalog number. Example: FTSASP-1800-3A.

Note: A 1" undersize cutter is required for flanges 14" and larger. Oversize outlets are available by special request.

FEATURES

- Body, straps and UNC threaded bolts are made of type 304 stainless steel. Flange can be either type 304 stainless steel or ASTM A36 carbon steel. All welds are fully passivated for corrosion resistance
- Outlet gasket is NBR (Buna-N) per ASTM D2000
- Belleville spring washers allow for limited pipe expansion and contraction
- Other sizes and ranges available. Contact your Ford Meter Box® representative for details
- Removable bolts provide better accessibility
- Rated for 250 psi up to 24" outlets. 30"-36" outlets rated for 200 psi. Ratings not to exceed the rating of the pipe.

The Ford Meter Box Company considers the information in this submittal form to be correct at the time of publication. Item and option availability, including specifications, are subject to change without notice. Please verify that your product information is current. Our standard warranty applies.



The Ford Meter Box Company, Inc.
P.O. Box 443, Wabash, Indiana U.S.A. 46992-0443
Phone: 260-563-3171 / Fax: 800-826-3487
Overseas Fax: 260-563-0167
www.fordmeterbox.com

03/07/23

Submitted By: