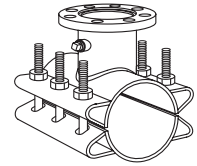


SUBMITTAL INFORMATION

Steel Tapping Sleeve - (FTSC-xxxx-xx-Z style)



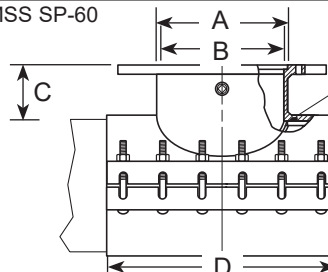
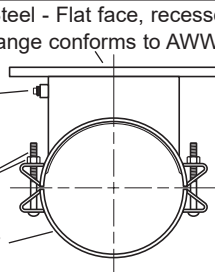
STEEL TAPPING SLEEVE WITH TYPE 316 HARDWARE

Flange - ASTM A36 Carbon Steel - Flat face, recessed per MSS SP-60 for standard tapping valve. Flange conforms to AWWA C207

3/4-14 No-Lead Brass
Test Plug

Bolts and Nuts -
Type 316 stainless steel

Finish - Fusion-bonded epoxy



Gasket - NBR (Buna-N) per ASTM D2000

Body - Heavy welded steel with
a recessed groove or retaining
rings to retain the gasket.

NOM. PIPE SIZE	SLEEVE O.D. RANGE (IN.)	BY	FLANGE SIZE CODE*	NOMINAL DIMENSIONS - INCHES				MIN. No. OF BOLTS	BOLT DIA.	SLEEVE NUMBER*	✓ SUBMITTED ITEM(S)
				COUNTER- BORE ID	OUTLET PIPE ID	TOP OF PIPE TO TOP OF FLANGE	WIDTH				
				A	B	C	D				
42"	41.70-42.40 42.40-43.10 43.10-43.80 43.90-44.60 44.60-45.30 45.00-45.70		2	3-3/64	2-1/16	5-3/16	12	6	3/4	FTSC-4240-xx-Z FTSC-4310-xx-Z FTSC-4380-xx-Z FTSC-4460-xx-Z FTSC-4530-xx-Z FTSC-4570-xx-Z	
			3	4-3/64	3-1/16	5-3/16	12	6	3/4		
			4	5-3/64	4-1/8	5-3/16	12	6	3/4		
			6	7-3/64	6-1/4	5-3/16	12	6	3/4		
			8	9-3/64	8-1/4	5-3/16	16	8	3/4		
			10	11-3/64	10-1/4	5-3/16	20	10	3/4		
			12	13-3/64	12-1/4	5-3/16	24	14	3/4		
			14	15-5/16	13-1/2	6-1/4	28	16	3/4		
			16	17-5/16	15-1/2	6-1/4	32	20	3/4		
			18	19-17/32	17-1/2	6-1/4	36	24	3/4		
			20	21-17/32	19-1/2	6-1/4	40	24	3/4		
			24	25-17/32	23-1/2	6-1/4	48	32	3/4		
			30	31-1/16	29-9/16	6-1/4	60	36	3/4		
			36	37-1/16	35-9/16	6-1/4	72	42	3/4		
48"	50.20-50.90 50.30-51.00 50.90-51.60 51.60-52.30		2	3-3/64	2-1/16	5-3/16	12	6	3/4	FTSC-5090-xx-Z FTSC-5100-xx-Z FTSC-5160-xx-Z FTSC-5230-xx-Z	
			3	4-3/64	3-1/16	5-3/16	12	6	3/4		
			4	5-3/64	4-1/8	5-3/16	12	6	3/4		
			6	7-3/64	6-1/4	5-3/16	12	6	3/4		
			8	9-3/64	8-1/4	5-3/16	16	8	3/4		
			10	11-3/64	10-1/4	5-3/16	20	10	3/4		
			12	13-3/64	12-1/4	5-3/16	24	12	3/4		
			14	15-5/16	13-1/2	6-1/4	28	14	3/4		
			16	17-5/16	15-1/2	6-1/4	32	16	3/4		
			18	19-17/32	17-1/2	6-1/4	36	18	3/4		
			20	21-17/32	19-1/2	6-1/4	40	20	3/4		
			24	25-17/32	23-1/2	6-1/4	48	24	3/4		
			30	31-1/16	29-9/16	6-1/4	60	36	3/4		
			36	37-1/16	35-9/16	6-1/4	72	42	3/4		

*To Order: Add flange size code to the sleeve number. Example: A 12" flange on 42" cast iron pipe would be FTSC-4460-12-Z.

**Not available as size-on-size

Note: A 1" undersize cutter is required for flanges 14" and larger. Oversize outlets are available by special request.

FEATURES

- Heavy welded steel meeting ASTM A36 36,000 psi minimum yield
- Bolts and nuts are type 316 stainless steel per ASTM A193 and A194
- Ring style gasket is NBR (Buna-N) per ASTM D2000
- Finish - Fusion-bonded epoxy-coating
- Certified to ANSI/NSF Standard 61
- Rated for 250 psi up to 24" outlets. 30"-36" outlets rated for 200 psi. Ratings not to exceed the rating of the pipe.

The Ford Meter Box Company considers the information in this submittal form to be correct at the time of publication. Item and option availability, including specifications, are subject to change without notice. Please verify that your product information is current. Our standard warranty applies.



The Ford Meter Box Company, Inc.
P.O. Box 443, Wabash, Indiana U.S.A. 46992-0443
Phone: 260-563-3171 / Fax: 800-826-3487
Overseas Fax: 260-563-0167
www.fordmeterbox.com

01/30/24

Submitted By: