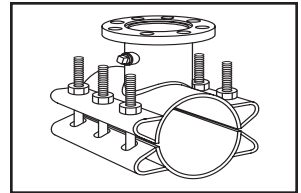


SUBMITTAL INFORMATION

Steel Tapping Sleeve - (FTSCP-4200-x style)



STEEL TAPPING SLEEVE (EPOXY COATED) - 42" FOR HDPE PIPE

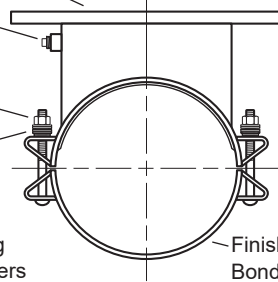
Flange - ASTM A36 Carbon Steel - Flat face, recessed per MSS SP-60 for standard tapping valve.

3/4-14 No-Lead Brass Test Plug

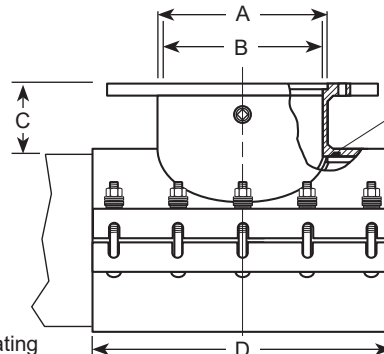
Bolts and Nuts - Type 304 stainless steel per ASTM A193 and A194

Belleville Spring Washer

Nut
Flat Washers
Spring Washers



Finish - Fusion Bonded Epoxy Coating



Gasket - NBR (Buna-N) per ASTM D2000

Body - Heavy welded steel with a recessed grooves or retaining rings to retain gaskets.

NOM. PIPE SIZE	SLEEVE O.D. RANGE (IN.)	BY	FLANGE SIZE CODE*	NOMINAL DIMENSIONS - INCHES				MIN. NO. OF BOLTS	BOLT DIA.	APPROX. WT. LBS.	SLEEVE NUMBER*	✓ SUBMITTED ITEM(S)
				COUNTER-BORE ID	OUTLET PIPE ID	TOP OF PIPE TO TOP OF FLANGE	WIDTH					
42"	42.00		2	3-3/64	2-1/16	5-3/16	12	6	3/4	296	FTSCP-4200-x	
			3	4-3/64	3-1/16	5-3/16	12	6	3/4	298		
			4	5-3/64	4-1/8	5-3/16	12	6	3/4	300		
			6	7-3/64	6-1/4	5-3/16	12	6	3/4	340		
			8	9-3/64	8-1/4	5-3/16	16	8	3/4	380		
			10	11-3/64	10-1/4	5-3/16	20	10	3/4	413		
			12	13-3/64	12-1/4	5-3/16	24	12	3/4	526		
			14	15-5/16	13-1/2	6-1/4	28	14	3/4	561		
			16	17-5/16	15-1/2	6-1/4	32	16	3/4	661		
			18	19-17/32	17-1/2	6-1/4	36	18	3/4	761		
			20	21-17/32	19-1/2	6-1/4	40	20	3/4	421		
			24	25-17/32	23-1/2	6-1/4	48	32	3/4	1151		
			30	31-1/16	29-9/16	6-1/4	60	36	3/4	1402		
			36	37-1/16	35-9/16	6-1/4	72	42	3/4	1670		

* To order: Add flange size to the sleeve number. Example: A 12" flange on 42" HDPE pipe would be FTSCP-4200-12.

FEATURES

- Heavy welded steel meeting ASTM A36 36,000 psi minimum yield
- Bolts, nuts and washers are type 304 stainless steel per ASTM A193 and A194. Heavy hex nuts are coated to prevent galling. Belleville spring tension washers under the nuts
- Ring style gasket is NBR (Buna-N) per ASTM D2000

The Ford Meter Box Company considers the information in this submittal form to be correct at the time of publication. Item and option availability, including specifications, are subject to change without notice. Please verify that your product information is current. Our standard warranty applies.



The Ford Meter Box Company, Inc.
P.O. Box 443, Wabash, Indiana U.S.A. 46992-0443
Phone: 260-563-3171 / Fax: 800-826-3487
Overseas Fax: 260-563-0167
www.fordmeterbox.com

02/27/24

Submitted By: