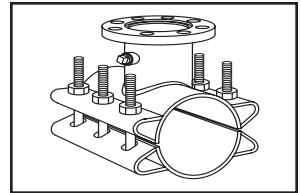


SUBMITTAL INFORMATION

Steel Tapping Sleeve - (FTSCP-xxxx-x-EPDM-U100 style)



STEEL TAPPING SLEEVE (EPOXY COATED) - 14" TO 16" FOR HDPE PIPE

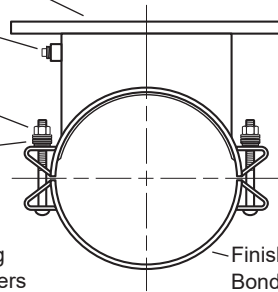
Flange - ASTM A36 Carbon Steel - Flat face, with recess per MSS SP-60 for standard tapping valve.
Flange conforms to AWWA C207

3/4-14 No-Lead Brass
Test Plug

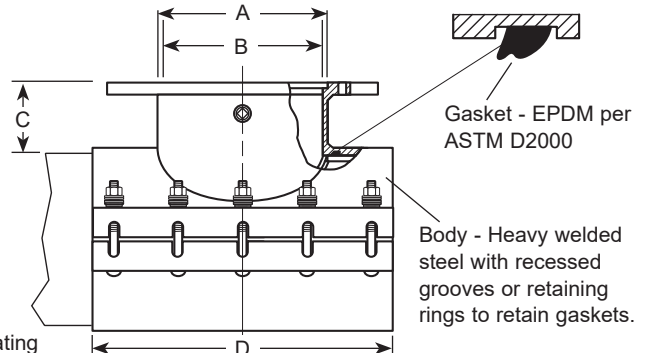
Bolts and Nuts - Type 304
stainless steel

Belleville Spring Washer

Nut
Flat Washers
Spring Washers



Finish - Fusion
Bonded Epoxy Coating



Gasket - EPDM per
ASTM D2000

Body - Heavy welded
steel with recessed
grooves or retaining
rings to retain gaskets.

NOM. PIPE SIZE (IN.)	SLEEVE O.D. RANGE (IN.)	BY	FLANGE SIZE CODE	NOMINAL DIMENSIONS - INCHES				No. OF BOLTS	SIZE OF BOLTS	APPROX. WEIGHT LBS.	SLEEVE NUMBER	✓ SUBMITTED ITEM(S)
				COUNTER- BORE ID	OUTLET PIPE ID	TOP OF PIPE TO TOP OF FLANGE	WIDTH					
				A	B	C	D					
14	14.00 15.30		2	3-3/64	2-1/16	5-3/16	12	6	3/4	94	FTSCP-1400-x-EPDM-U100 FTSCP-1530-x-EPDM-U100	
			3	4-3/64	3-1/16	5-3/16	12	6	3/4	96		
			4	5-3/64	4-1/8	5-3/16	12	6	3/4	99		
			6	7-3/64	6-1/4	5-3/16	12	6	3/4	110		
			8	9-3/64	8-1/4	5-3/16	16	8	3/4	152		
			10	11-3/64	10-1/4	5-3/16	20	10	3/4	203		
16	16.00 17.40		12	13-3/64	12-1/4	5-3/16	24	12	3/4	228	FTSCP-1600-x-EPDM-U100 FTSCP-1740-x-EPDM-U100	
			2	3-3/64	2-1/16	5-3/16	12	6	3/4	108		
			3	4-3/64	3-1/16	5-3/16	12	6	3/4	110		
			4	5-3/64	4-1/8	5-3/16	12	6	3/4	110		
			6	7-3/64	6-1/4	5-3/16	12	6	3/4	118		
			8	9-3/64	8-1/4	5-3/16	16	8	3/4	170		
			10	11-3/64	10-1/4	5-3/16	20	10	3/4	210		
			12	13-3/64	12-1/4	5-3/16	24	12	3/4	265		
			14	15-5/16	13-1/2	6-1/4	28	14	3/4	325		

* To order: Add flange size to the sleeve number. Example: A 12" flange on 14" HDPE pipe would be FTSCP-1400-12-EPDM-U100.

Note: A 1" undersize cutter is required for flanges 14" and larger. Oversize outlets are available by special request.

FEATURES

- Heavy welded steel meeting ASTM A36 36,000 psi minimum yield
- Bolts, nuts and washers are type 304 stainless steel per ASTM A193 and A194. Heavy hex nuts are coated to prevent galling. Belleville spring tension washers under the nuts
- Ring style gasket is EPDM per ASTM D2000
- Rated for 250 psi up to 24" outlets. Ratings not to exceed the rating of the pipe.
- 100% manufactured in the United States of America

The Ford Meter Box Company considers the information in this submittal form to be correct at the time of publication. Item and option availability, including specifications, are subject to change without notice. Please verify that your product information is current. Our standard warranty applies.



The Ford Meter Box Company, Inc.
P.O. Box 443, Wabash, Indiana U.S.A. 46992-0443
Phone: 260-563-3171 / Fax: 800-826-3487
Overseas Fax: 260-563-0167
www.fordmeterbox.com

06/24/24

Submitted By: